

<b>ABSTRACT OF COST FOR THE INDIAN BANK</b>		
<b>AT BRANCH +ATM AMAR PATAN</b>		
<b>S.No.</b>	<b>DESCRIPTION</b>	<b>AMOUNT (Rs.)</b>
<b>1</b>	<b>FURNISHING WORK</b>	
<b>2</b>	<b>ELECTRICAL WORK</b>	
<b>3</b>	<b>Air Conditioning</b>	
	<b>TOTAL (Rs.)</b>	

**Bharat and Associates.**  
Architects, Engineers, Interiors &  
Landscape Designers,  
Shop no-1, First Floor, Jeevan Plaza  
Viram Khand-5, Gomti Nagar, Lucknow-226010  
E-Mail: bharatandassociateslko@gmail.com

**PROJECT - BOQ FOR FURNISHING WORKS.**

**BANK - INDIAN BANK**

**BRANCH +ATM AMAR PATAN.**

**\*ALL ITEM TO EXCLUSIVE OF TAXES . Taxes to Mentioned By the Contractor.**

**\*ALL WORKS TO BE DONE AS PER TENDER CONDITIONS.**

<b>Laminate use only-Century,Green,Archid (Other Laminate is not Acceptable)</b>					
S.NO.	DESCRIPTION OF ITEM	QUANTITY	UNIT	RATE (Rs.)	AMOUNT (Rs.)
<b>FALSE CEILING WITH COVE</b>					
1	Providing, fabricating and erecting in position totally flushed suspended false ceiling with 12.0mm thick Gypsum board, fixed to a metal frame work comprising of ceiling channel of size 80mmx26mmx0.5mm @ every 457cm centre, inter channel 45mmx15mmx0.9mm @ every 1220 cm centres, perimeter channel 20mmx26 mm all along the wall/partitions, strap hanger suspenders 25mmx0.5mm with nuts and bolts 6.4mmx12.7mm, connecting clips 2.6mm thick, dry walls screws 25m long, soffit cleats 27mmx37mmx25mmx1.6mm thick and dash fastenes / rawl plugs 12.5 mm diax35mm long with 6mm dia bolts etc. complete with recommended fillers, paper tapes and applying two coats of acrylic emulsion paint of approved shade and make over a coat of primer including making necessary cut outs for light fittings/ ACs etc. complete as per manufacture's specifications. (Quantity as per layout plan/site requirement)	645.00	Sqft		
2	Providing and fixing 600 mm x 600 mm mineral fiber tiles false ceiling of Armstrong/Gypboard/equivalent approved make of micro look system including suspension system as per manufacturer's specifications and instructions of Architect/ Engineer complete in all respects including making cutouts where necessary for electrical lighting fittings etc. complete all as directed by the Bank. (Quantity as per layout plan/site requirement)	755.00	Sqft		
3	Designer MDF board false ceiling/Pillars 12mm thick with CNC Cutting and backing of Acrylic /Metalim,Equivalent as per direction of the architect.The support system to be as above.	0	Sqft		
<b>WALL PANELLING &amp; COLUMN ENCASING WITH DIFFERENT LEVEL INSTRUCTION AS PER ARCHITECT</b>					
4	Supplying and erecting Wall paneling / Column encasing (up to false ceiling) as per drawing and design and conforming to the following specifications : Basic frame work: Framing shall consist of Heavy duty Aluminum Box Sections 50mm x 50mm @ 600mm c/c both ways Horizontally and Vertically. The vertical alternate frames to be fixed to the ceiling with necessary fixtures. Vertical members shall be suitably anchored at ceiling level to ensure rigidity. Skin membrane : 6 mm thick BWP grade plywood on face.	165.00	Sqft		
<b>Finishing :</b> 1.0mm thick laminate sheet of same or combination shades with grooves as per instructions. Skirting: 100mm high laminate of approved make & shade all as directed. Top Border: 150mm high laminate of approved make & shade all as directed.  Note: Quoted rates shall include all necessary materials, accessories and labour and also for making provisions for electrical/telephone/computer wiring, conduits and switch boxes, etc. where ever required. (quantity/location should be restricted only to the central pillars in Banking hall/to hide electrical pipes/AC drain pipes/any prime location)					

<b>PARTITIONS</b>					
<b>5</b>	<p><b>CASH CABIN PARTITIONS :</b>  Supplying &amp; Erecting full height solid cash cabin partitions (upto false ceiling as per following specifications :  Basic frame work:  Framing shall consist of Heavy duty Aluminium Box Sections 50mm x 50mm @ 600mm c/c both ways Horizontally and Vertically. The vertical alternate frames to be fixed to the ceiling with necessary fixtures. Vertical members shall be suitably anchored at ceiling level to ensure rigidity.  Skin membrane: To be finished with 6mm thick BWP grade plywood on each face with grooves, as per drawings/ instructions.  Finishing: 1.0mm thick laminate of same or combination shades with grooves in both faces as per instructions.  Skirting- 100mm high laminate of approved make &amp; shade all as directed.  Top Border: 150mm high laminate of approved make &amp; shade all as directed.  It shall have decorative aluminum grill (from 1200mm to 2100mm) fixed with teak wood beading (size – 30mm x 20mm, as per profile) with melamine finish.  The job shall also include for provision of laying conduits, switch boxes etc. The erection of partition shall include for expansion bolts cleats, clamps bolts, nuts, screws, rivets and other accessories, all complete up to the satisfaction of the Architect. All door opening shall have rebated teak wood framework (size – 75mm x 50mm, as per profile) on vertical (2 Nos.) and horizontal (1 No.) sides, with melamine finish and rebate of 40mm x 12mm, all complete up to the satisfaction of the Architect.</p>	145.00	Sqft		
	<p><b>Quoted rates shall include all necessary materials, accessories and labour and also to make provisions for electrical / telephone / computer wiring conduits and switch boxes, etc. (Materials for wiring, conduits, switches etc. shall be separately paid for)</b></p>				
<b>6</b>	<p><b>Supplying and erecting full height partly glazed / unglazed partitions as per following specifications:</b>  Basic frame work: Framing shall consist of Heavy duty Aluminum Box Sections 50mm x 50mm @ 600mm c/c both ways Horizontally and Vertically. The vertical alternate frames to be fixed to the ceiling with necessary fixtures. Vertical members shall be suitably anchored at ceiling level to ensure rigidity.  Exposed frame members in the glazed portions shall have wider spacing (approx. 1200 mm) and be finished with 1.00 mm thick laminate of same or combination shades, over 6mm BWP grade ply.  Skin membrane: (Opaque portion up to 900mm from floor level and from 2100mm to ceiling, finished with 6mm thick BWP grade plywood on each face with grooves, as per drawings/ instructions.  Finishing: 1.0mm thick laminate of same or combination shades with grooves as per instructions.  Glazing: 12mm thick clear float glass fixed with polished teak / steam beech wood glazing beads of approved shape (finished 12 x 25mm). Skirting- 100mm high laminate of approved make &amp; shade all as directed.  Top Border: 150mm high laminate of approved make &amp; shade all as directed.  Quoted rates shall include all necessary materials, accessories and labour and also to make provisions for electrical / telephone / computer wiring conduits and switch boxes, etc. (Materials for wiring, conduits &amp; switches etc. shall be separately paid for)</p>	395.00	Sqft		
<b>6</b>	<p><b>Supply and erecting low height opaque partitions (up to maximum 1200mm height) conforming to the following specifications :</b>  Basic frame work: Framing shall consist of Heavy duty Aluminium Box Sections 50mm x 50mm @ 600mm c/c both ways Horizontally and Vertically. The vertical alternate frames to be fixed to the ceiling with necessary fixtures. Vertical members shall be suitably anchored at ceiling level to ensure rigidity.  Skin membrane: 6 mm thick BWP grade ply on each face up to 900mm height.  Glazing: 12mm glass in remaining portion,  Finishing: 1.0-mm thick laminate of same or combination shades with grooves as per instructions.</p>	65.00	Sqft		
	<p>Edge moulds: All free top/ end surfaces shall have polished teak / steam beech wood moulds of approved shape (from 18 x 50mm sections).  Skirting- 100mm high laminate of approved make &amp; shade all as directed.  Quoted rates shall include all necessary materials, accessories and labour and also allow provisions for electrical / telephone/computer wiring, conduits and switch boxes, etc. (Materials for wiring, conduits and switch boxes shall be separately paid for.)</p>				
<b>7</b>	<p>UPS PARTITION WITH BISOM BOARD HT REST SPECIFICATION AS PER AS PER ABOVE PARTITION.</p>		Sq.Ft		

COUNTER & WORK STATIONS					
8	<p><b>Providing and erecting in position Cash Work Station of approx. size 1370x900x750mm (4.5'x3.0'x2.5'), made of 19mm thick block board pasted with 1.00mm laminate inclusive of a 350mm wide customer top at 1155 mm level.</b> Writing top &amp; customer top should be finished with mirror polished; 18mm thick granite slab (Jet black) with rounded edges and sides with 1.0mm thick laminate of approved shade/make. Both should have sufficient gap in between to accommodate computer monitor up to full depth. The workstations shall be supported from the partition system made of 19mm thick BWP grade block board finished with 1.00 mm thick laminate of approved shade/make. Free edges shall have 18 mm thick, polished white or steam beach wood moldings of half-round profile as per drawings and instructions and 100mm high laminate of approved make &amp; shade all as directed.</p> <p>Each cash workstation shall comprise of the drawer unit, Tea tray at top, Cash drawers with approved telescopic channels for drawer-slides, automatic locks (keys in duplicate), wire managers, space for computer CPU, modesty panel and other necessary hardware and accessories including satin finish S. S. handles of approved quality. Inner face of cash counter to be provided with 16G, M.S. sheet, painted with two coats of synthetic enamel paint of approved shade &amp; make, over a coat of approved steel primer. Inner faces shall be painted with two coats of synthetic enamel paint of approved shade &amp; quality over a coat of primer.</p> <p>Skirting: 100mm high laminate of approved make &amp; shade all as directed.</p>	4.50	Rft		
8	<p><b>GLASS BARRIER ON CASH CABIN / OFFICER COUNTER</b>  <b>Providing &amp; fixing 12mm thick clear float glass on Cash Counters at front &amp; sides, with S S clamps/patch fittings, necessary polished beadings etc complete all as directed by the Bank.</b></p> <p>Note: Front glass to be fixed in slanting position towards inside cash area with required angle as directed. Above glass to be fixed either in two pieces. Lower piece having one semi-circular/rectangle 6" dia/long opening at customer top level &amp; other piece to be fixed at suitable height making 3" slit for conversation with customer. In this case, only glass area to be measured for payment purpose.) In case of single piece, one semi- circular/rectangle 6" dia/long opening at customer top level  &amp; one circular hole of required dia at suitable height for conversation at centre of cash counter to be provided.</p>	55.00	Sqft		

9	<p><b>ALUMINIUM JALI ON CASH CABIN TOP</b>  Providing and fixing of aluminum grill with square size 75mm x 75mm - 8mm, on top of the cash cabins etc. The grill shall be tightly stretched and nailed to a wooden frame work, made out of 50mm x 40mm teak/hard wood (with anti-termite) members at 750mm c/c approx. both ways or as per site conditions. The erection of framework shall include for expansion bolts cleats, clamps bolts, nuts, screws, rivets and other accessories. All teak wood surfaces shall be painted with two coats of synthetic enamel over one coat of primer. The rate shall include cost of all materials, labour, T&amp;P, wastages, etc. required for proper completion of work, all complete to the satisfaction of the Bank.</p>	35.00	Sq.Ft.		
10	<p><b>OFFICER COUNTERS/low level counter</b>  <b>Supplying and erecting counters (running tables) 915 mm wide and 750mm high including drawer-cum- cabinet unit for files, space for computer CPU, wire managers, modesty panel, tea tray etc.</b> made with 19mm thick BWP grade block board on top and supporting sides / front with necessary well seasoned Malaysian Sal/ Kail/ Mirandi wood frame work, finished on top with mirror polished 18mm thick granite slab (Jet black) with rounded edges and sides with 1.0 mm thick laminate of approved shade and quality, including providing and fixing 450mm long key board tray of approved shade, hardware and accessories at each of the counter. All exposed edges of block board are to be provided with half round teak wood mouldings, duly polished and 100mm high laminate of approved make &amp; shade all as directed. Inner faces shall be painted with two coats of synthetic enamel paint of approved shade &amp; quality over a coat of primer.  Skirting: 100mm high laminate of approved make &amp; shade all as directed. Rate to include charges for brass hardware fittings as well as fixtures like sliding gear for drawers of 'Earl Behari' or equivalent approved make.</p>	25.00	Rft		
<b>DOORS :</b>					
11	<p>Supplying and fixing in position overall 32 mm thick solid core hot pressed phenol formaldehyde bonded flush door finished with 1.0 mm thick laminate of approved shade and quality on both sides of the door shutter &amp; beading on edges including cost of hardware fittings e.g. Godrej night latch / mortise lock, hinges, door closure, handles etc. of approved make and quality &amp; making provision of peep hole of suitable size with glass&amp; beading all-round all as directed. (Cash/Store/Other doors)</p>	63	Sqft		
12	<p>Supplying and fixing in position 32 mm thick solid core hot pressed phenol formaldehyde bonded partly glazed flush door shutter of approved make finished up to 900 mm from floor level with 1.00 mm thick laminate of approved quality on both sides of the door shutter &amp; beading on edges. The upper portion of the shutter is to be provided with 12 mm thick clear float glass fixed with white or steam beech wood glazing beads of approved design, complete as per drawing.  Rate to include cost of hardware fittings e.g. mortise lock, hinges, handles, door closer etc. of approved make and quality. (Manager cabin door)</p>	42.00	Sqft		

13	<b>FLAP DOOR</b> Providing and fixing Flap Door of min. size: 3' (B) X 2'6" (H) made of block board with approved lamination on both side, of required size with hinges/tower bolts/stopper/handles etc complete.	12.00	Sqft		
14	<b>ENTRANCE DOOR (WITH ETCHING, HEIGHT - 8' &amp; GLASS - 12mm THICK)</b> Providing fabricating & fixing in position twin -style door at Main Entrance made of anodized/powder coated Aluminum sections of size 100mm height x 50mm thick aluminum bottom rail, 100mm x 50mm thick vertical and top rail 100mm x 50mm thick lock rail floor spring of ISI make, clip sections and 12mm thick glass(Modi/ Saint Gobain make) including fixing the frame to brick wall/RCC/wooden surfaces with necessary fasteners to have proper fixity including all incidentals etc complete. Glass to be fixed in the grooves of the aluminum sections with necessary materials/beading etc. The job also includes cost of providing & fixing heavy duty double action hydraulic floor spring ( ISI mark ) in the floor, fixing the door on it, including necessary fixing materials on the lintel/bottom, bolts, locks & satin finish stainless steel decorative tubular handles(approx.300mm long) on both faces complete as per drawing and instructions. All members to be 16 gauge. The vertical shutter rail to house wool packing to act as a sealant for a gap between shutter and frame fixed glazing. The rate should also include cost for decorative etching on the glass.	110.00	Sqft		
15	<b>LOW / FULL HEIGHT STORAGE CABINET</b> P/F in position 450mm deep storage full ht./low ht.cabinets having sides partitions,shelves & shutters,fabricated out of 19mm BWR & 6mm th.BWR Plywood back,with all exposed surfaces & inside of shutters/internal base of drawers to be finished with 1mm th laminate of rate not less than Rs.1300/- Per Sheet & P/F decorative mettalic laminate skirting(silver paint brush 1001 PB of Century)(100mm)as/arch.drg. i/c 31x31mm rounded steem beech wood moulding & 6x19mm steem beech wood edging on edges of comm.board as/arch.drg.complete with shelves,shutter,drawers etc.i/c P/F necessary hardware telescopic channels for drawers of Hettich,S.S.piano hinges as/appvd.sample,Hettich handles(as/appvd.sample)in all drawers & shutters.locking arrangement,75mm brass tower bolts,Hettich locks in all shutters & drawers,magnet catcher,painting the exposed internal surfaces of block board with 2-3 coats of synthetic enamel paint with melamine finish on wood surface with 6mm comm.ply at rear as per arch.drg.& <b>as per site requirements the rate should include 19mm th.pre-polished Itallian granite stone (Asian Quartz) of rate not Less than Rs.350/-per sqft.as per appvd.sample with half round bevelled edge complete on low ht.storage cabinets.</b>	100.00	Sq.Ft.		
16	<b>BRANCH MANAGER TABLE WITH SIDE CREDENZA INCLUDE 12mm THICK GLASS:-</b> Providing and placing in position tables with top, vertical sides/dividers, skirting and modesty panel made out of 19mm thick water proof board with 1mm thick laminate (as/shade approved by the Architect) on all exposed surfaces. It shall also have 75mm x 40mm teak wood runners below the top and for footrest below. Every table shall be provided with a side unit (size - W-500mm, H-750mm, D-500mm approx.), consisting of 150 mm deep drawer at top and a cabinet with open able/hinged shutter below. The facia of drawer and shutter of cabinet below shall be made out 19mm thick water proof board with 1mm thick laminate (as/shade approved by the Architect) and sides and bottom of drawer shall be made out of 12mm thick water proof ply. The side unit shall have CAM locks, handles, guides, sliding units, hinges, magnetic catcher's etc. of approved make. Every table shall be provided with a pedestal unit (size - W-550mm, H-720mm, D-450mm approx.) below. The table shall have 100mm deep facia, below the top, in which keyboard drawer unit shall be adjusted. It shall be made out 19mm thick water proof board with 1mm thick laminate (as/shade approved by the Architect) and sides and bottom of drawer shall be made out of 12mm thick water proof ply. The unit shall have CAM locks, handles, guides, sliding units etc. of approved make. The job shall include for 6mm x 6mm grooves in between sides and open able drawers and hinged shutters. All the exposed edges of water proof board and ply shall be provided with 6mm thick teak wood/hard wood lipping. All teak wood surfaces shall be melamine polished and other internal surfaces shall be painted with two coats of synthetic enamel over one coat of primer, all complete to the satisfaction of the Architect. Every table top shall be provided with 12 mm thick float glass (as per profile) with polished and beveled (25mm wide) edges all complete to the satisfaction of the Architect. Approx size of table : 1830 x 915 x 750 mm (6'0" x 3'0" x 2'5" or	1.00	No.		

17	<p><b>OFFICER TABLE WITH SIDE CREDENZA INCLUDE 12mm THICK GLASS:-</b>  Providing and placing in position tables with top, vertical sides/dividers, skirting and modesty panel made out of 19mm thick water proof board with 1mm thick laminate (as/shade approved by the Architect) on all exposed surfaces. It shall also have 75mm x 40mm teak wood runners below the top and for footrest below.  The facia of drawer and shutter of cabinet below shall be made out 19mm thick water proof board with 1mm thick laminate (as/shade approved by the Architect) and sides and bottom of drawer shall be made out of 12mm thick water proof ply. Every table shall be provided with a pedestal unit (size - W-465mm, H-720mm, D-450mm approx.) below. The table shall have 100mm deep facia, below the top, in which keyboard drawer unit shall be adjusted. It shall be made out 19mm thick water proof board with 1mm thick laminate (as/shade approved by the Architect) and sides and bottom of drawer shall be made out of 12mm thick water proof ply. The unit shall have CAM locks, handles, guides, sliding units etc. of approved make.  The job shall include for 6mm x 6mm grooves in between sides and open able drawers and hinged shutters. All the exposed edges of water proof board and ply shall be provided with 6mm thick teak wood/hard wood lipping. All teak wood surfaces shall be melamine polished and other internal surfaces shall be painted with two coats of synthetic enamel over one coat of primer, all complete to the satisfaction of the Architect. Every table top shall be provided with 12 mm thick float glass (as per profile) with polished and beveled (25mm wide) edges all complete to the satisfaction of the Architect.  Approx Size : 1372 x 750 x 750 mm (4.6'x 2.5'x 2.5')</p>	1.00	No		
18	<p><b>PAINTING WORK (with Two Coat POP Base)</b>  Painting on undecorated / decorated wall and ceiling surfaces with two or more coats of acrylic emulsion (Asian/Berger make) (as / shade approved by the Architect) of approved brand. It shall include for preparing the surfaces clean, even and smooth with thoroughly brushing with broom, scratching with patti and sand papering respectively, so that the surfaces are free from oil, grease, dirt, mortar droppings &amp; other foreign and loose matter. It shall also include for preparing the surface and filling of holes with plaster of paris before priming coat of whitening / approved primer.  The rate shall include cost of all materials such as plaster of paris, whitening / primer, glue (Fevicol), indigo / stainer, brushes, sand paper, patti, dhoti, broom stick, clean water with storage and other containers, labour, scaffolding / ladder charges, cleaning of floors and other sundries etc., all complete to the satisfaction of the Architect.</p>	2968.00	Sqft		
<b>MISCELLANEOUS ITEMS :</b>					
19	<p><b>SLIP &amp; CUSTOMER WRITING DESK</b>  Providing and fixing in position (with rear wall) slip and customer writing desk (as per design) of overall size - 1200mm x 450mm x 300mm. The fixing shall include for expansion bolts, cleats, clamps, bolts, nuts, screws, rivets and other anodized accessories, all complete up to the satisfaction of the Architect.  The writing top and facia/sides shall be made out of 19mm thick water proof board with 1mm thick laminate (as per shade approved by the architect), on all sides and . It shall be laid over the base of 19mm thick water proof board (already considered in various items.) and fixed with araldite. It shall include for beveling and polishing at all the exposed edges. The rate shall include cost of all materials, labour, scaffolding, wastages, polishing and T&amp;P etc. It shall be made out of 12mm thick water proof plywood (two surfaces of 6mm thickness, fixed together, where required) on rear and both sides. The front shall be made out of 12mm thick glass (as per profile). It shall be fixed in the grooves, made in side members, in an inclined manner (as per profile in drawing enclosed) with a gap of 75mm (max.) in between. The space shall be further divided in four equal parts with help of 12mm thick water proof plywood. All edges of the glass shall be polished. All the exposed edges of water proof board and plywood shall be provided with 6mm thick teak wood/hard wood lipping. All teak wood surfaces shall be melamine polished and other internal surfaces shall be painted with two coats of synthetic enamel over one coat of primer, all complete to the satisfaction of the Architect.</p>	1.00	No.		

20	<p><b>CHEQUE DROP BOX / SUGGESTION BOX</b>  Supplying and erecting cheque drop box / suggestion box (over all size 400mmx150mmx600mm) made of 19 mm thick BWP grade ply board and curved portion at top made out of 90mmx90mm C.P. teak/steam beach wood section. A slit opening of 10mmx150mm is to be provided at the top of the box. An openable shutter of 259mmx262mm size made of 19 mm thick BWP grade block board is to be provided. The entire exposed timber surface including all free edges is to be finished with 1mm thick laminate sheet of combination shade. Inner faces shall be painted with two coats of synthetic enamel paint of approved shade &amp; quality over a coat of primer. Rate to include cost of necessary hardware fittings e.g. hinges, lock, knob, etc. of approved design and quality.</p>	2.00	Nos.		
21	<p><b>NOTICE BOARD</b>  Providing and fixing in position notice board (as per design) of size – 900mm x 600mm x 150mm. The sides shall be made out of 19mm thick water proof board with 1mm thick laminate (as per shade approved by the architect) on all exposed surfaces.It shall have 12mm thick tack The front shall have 6mm thick float glass sliding shutter in two parts.It shall also have 19mm wide two track aluminium channel for sliding arrangement, all around, along with locking arrangement. Board (Make – Cellotex or equivalent) wrapped with stretched blazer cloth (Make- Raymonds), of Rs. 200.00 per Mt. (approx.) in colour and pattern approved by the Architect. It shall be fixed with help of nail/partial wood (sect. 19mm x 25mm) frame work. It shall be covered with 6mm thick water proof plywood, on the back. All the exposed edges of water proof board and ply shall be provided with 6mm thick teak wood/hard wood lipping. All teak wood surfaces shall be melamine polished and other internal surfaces shall be painted with two coats of synthetic enamel over one coat of primer, all complete to the satisfaction of the Architect.</p>	1.00	Nos.		
22	<p><b>ETCHING WORK &amp; BANK LOGO FOR BRANCH</b>  Etching for Toughened glass (Branch and ATM), Etching for Cash Cabin Glass, Etching for Front counters.  Etching work on glass with chemicals (as per design and profile) as and where required. The rates shall include cost of all materials, labour, T&amp; P, wastage, transportation etc. required for proper completion of work. It shall be made out of following profile.-Bank's logo (300mm dia. / 300mm x 300mm).All complete to the satisfaction of the Architect.  Etching work on glass with chemicals (as per design and profile) as and where required. The rates shall include cost of all materials, labour, T&amp; P, wastage, transportation etc. required for proper completion of work.  It shall be made out of following profile.-Bank's logo (300mm dia. / 300mm x 300mm).All complete to the satisfaction of the Architect.</p>	1.00	L.S.		
23	<p><b>MAIN PANEL BOXING</b>  Providing &amp; fixing in position 2"x2" kailwood frame and finished with 6 mm thk. Ply on Outer sides with 1.0 mm thk &amp; Inner Side of Storage Paste 1.5 Thick Aluminum Tubular Section of Approved Colour Pattern . Front Side of Storage Aluminum Jali for Ventilation of the Panel &amp; the Measurement of the Storage only front Facia of the Storage (Lenth x Height). All work Complete to the Satisfaction of the Bank /Architect.</p>	65.00	Sqft		
24	<p><b>ACP PANNELING</b>  ACP Panneling &amp; Rolling Shutter Box.  Frame Work-2" X 2" X 1.5 mm thick Aluminium Tubular section (Horizontal/Vertical) Jindal Make  Aluminium Composite Panel-3.0mm thick of approved colour with bonding material</p>	0.00	Sqft		
25	<p><b>VERTICAL BLINDS</b>  Providing &amp; fixing in position vertical blinds of Vista as per approved colour by Bank's Engineer &amp; Architect</p>	0.00	Sqft		
26	<p><b>SLIDING ALUMINIUM WINDOW WITH BOMBAY SLIDERS</b>  Aluminium sliding window with bombay sliders. This would include all necessary hardware &amp; complete with all respects.</p>	0.00	Sqft		



<b>27</b>	<b>Center Table of Size 2'-3" x 2'-3"</b>	0.00	No.		
	Supplying and providing 2'-3" x 2'-3" Tea poy as follows.				
	Skeleton of the tepoy shall be made of Steam beach members of 1 1/2" x 1 1/2". Top shall be made from 12mm thick palin Glass with bevelled and polishing edges shall be provided. One shelf of 18mm thick MR grade plywood shall be provided at the bottom. All the surface shall be polished as directed.				
<b>28</b>	<b>Wooden Planter with Plants</b>				
	Providing and placing in position planter made of phenol bonded 19 mm thick Premium Board (Century & Green) with top front and sides finished in 1.0 MM Thick laminate including GI trough with sand and marble chips filling and artificial plants as per the approval of the architect of not less than Rs.750. The design of the grooves shall be as per detailed drawing and complete as per Architects direction	0.00	nos.		
<b>29</b>	<b>POSTER FRAMES -WALL MOUNTED</b>	0.00	nos.		
	2 sheets of 36" x 24" clear acrylic (poster to be sandwiched in between). Outer sheet is 5mm thick and bevelled crystal edge polished for 3/4" at 8-10 degrees on all sides in the front.Rear sheet is 5 mm thick flat.				
<b>30</b>	<b>Toughened Glass with Steel Clamp</b>	0.00	Sqft		
<b>31</b>	<b>Sofa ( 3 SEATER)</b>	0.00	No.		
	e. PU molded three seater waiting seats upholstered with upholstery of about Rs.350/- perm. (as per approval of the architect) with 50mm thick 32 density U foam.The whole structure fabricated on tubular frame powder coated upto 95 microns Inclusive of all materials, labour, T&P taxes etc. completed to the satisfaction of architect.				
<b>32</b>	<b>post construciton antitermite treatment</b>	1	JOB		
	by drilling holes and injecting chemical as per IS code from a reputed company with 10 years warranty certificate				
<b>33</b>	<b>Customized ATM Guide</b>	0	No.		
	Customized ATM Guide/CDM Plate with digital printing and wall mounted on studs.				
<b>34</b>	<b>Aircan Louvers</b>	0	No.		
	Prviding & Fixing 6" powdercoated aluminim loures of approved colors.				
<b>GRAND TOTAL AMOUNT</b>					
<b>GST EXTRA</b>					

**List of approved make**

**Wood : First class steam beach wood or as specified**

**Polish : MRF Polyurethane**

**Soft Board : Celotex**

**Block Board: Century / Archidply / Greenply (IS: 710 BWR- only Premium quality.)**

**Ply Board: Century / Archidply / Greenply (IS: 710 BWR- only Premium quality.)**

**Laminates:-**

**For Partitions/Tables/Counter Surface:- Century Ply :303- Bodensee Beech,**

**Sunmica : E-224/1224-Steam Beech, Formica-FI-1224(SF)-Steam Beech-I,**

**Greenlam : 685-Swiss Pear**

**For Border & Skirting:- Century:191- Radiant Red, Sunmica : G-448/1448-Teracotta, Formica- FI-1517(SF) Sienna, Greenlam: 165- Light Red**

**Glass: Modi/Saint Gobin**

**Gyp Board: India Gypsum / Armstrong / St Gobain**

**Aluminium Sections : Hindalco / Jindal**

**Locks/Handles: Godrej / Harrison / Hettic**

**Magnet Catcher : Supreme / Excel**

**Drawer Sliding Fittings: Earl Bihari (EBCO)/Godrej/ Hettich or equivalent approved.**

**Floor Spring/Door Closer: Hemco / Hardwin/ Godrej or equivalent approved.**

**Paint : Asian Paints / Berger / Nerolac**

**Other materials: ISI mark & approved by the Bank.**

--	--	--	--	--	--

**Bharat and Associates.**  
Architects, Engineers, Interiors &  
Landscape Designers,  
Shop no-1,First Floor,Jeevan Plaza  
Viram Khand-5 ,Gomti Nagar,Lucknow-226010

**PROJECT - BOQ FOR ELECTRICAL WORKS.**

**BANK - INDIAN BANK**

**BRANCH +ATM AMAR PATAN**

S.N	PARTICULARS	Unit	Qty	Rate	Amount
	A -Electrical wiring (All switches to be Modular type - Anchor/ Havells or equivalent approved by architect)				
	<u>Light &amp; Fan points</u>				
1	Supply & Installation of concealed Point Wiring for light, fan & exhaust fan points controlled thru modular switches complete with boxes & cover plate - The point wiring shall be carried with 3 x 1.5sq.mm FRLSH (Fire Resistant low smoke Halogen) stranded Cu. Wires in 20mm PVC conduit pipe concealed in wall/ floor/ panelling/ partitions or above false ceiling as per requirement. The job shall be complete & to the entire satisfaction of the Bank. Each Switch board should be provided with suitable capacity fuses/ fuse indicator. <b>All switch &amp; sokets shall be modular type complete with cover plate &amp; GI/ MS box.</b> The work shall also include for cutting chase for conduits and moulded boxes, if required, in the wall/ floor (Without damaging the building/wall) along with clamping the conduit at every 600mm interval & finally finishing the surface & matching the same with the existing surface.The rate should include the cost of all materials, labour, T&P, taxes & levies, scaffolding, shifting of furniture, carting away the debris and cleaning the floor etc.The job shall be complete & to the entire satisfaction of the Bank.				
a	Light points + AFF points including the cost of 6A switch	Point	40		
b	Ceiling Fan Point exhaust including the cost of 6A Switch along with electronic regulator	Point	5		
c	Wall Fan Point along with 6A switch	Point	12		
d	6A switch & Socket on SDb	Point	10		

2	<b>RAW POWER POINT</b>				
	<p>Single Power Points - Supply &amp; Installation of Circuit Wiring (Single 6/16Amps power Points)</p> <p>: Supply &amp; laying of circuit wiring for 6/16 Amp. Switch points with 2 x2.5 + 1x 1.5sq.mm FRLSH (Fire Resistant low smoke Halogen) Cu stranded wires laid in 20mm conduit pipe concealed in wall/ floor/ panelling/ partitions as per requirement. The job shall be complete &amp; to the entire satisfaction of the Bank.t. The earth wire of green color only. <b>All switch &amp; sokets shall be modular type complete with cover plate &amp; GI/ MS box.</b> The work shall also include for cutting chase for conduits and moulded boxes, if required, in the wall/ floor (Without damaging the building/wall) along with clamping the conduit at every 600mm interval &amp; finally finishing the surface &amp; matching the same with the existing surface.The rate should include the cost of all materials, labour, T&amp;P, taxes &amp; levies, scaffolding, shifting of furniture, carting away the debris and cleaning the floor etc.The job shall be complete &amp; to the entire satisfaction of the Bank.</p>	Point	10		
1	<p>AIR CONDITION POINTS -Circuit wiring with 2x4.0sq.mm + 1x 1.5sq.mm FRLS Cu stranded wires (Finolex/ Anchor/ Skytone) to be laid in 19mm PVC pipe heavy duty laid &amp; concealed in wall/ floor/ panelling/ partitions as per requirement. The job includes Supply &amp; Fixing of Havells MCB protected power unit DBOXx type c/w 25A 2P MCB (Havells DHUCDP0253016-25 2P) including proper connections or any equivalent approved by Architect. The job shall be complete &amp; to the entire satisfaction of the Bank.</p>	Point	7		
4	<b>UPS (BRANCH)</b>				
A	<p>Sub Main Wiring/ Cabling - : SITC of sub main wiring 4nos. 10 sq.mm Stranded copper wires for UPS Input from main incoming panel to incoming Db of UPS power input system etc. in 25mm dia PVC haevy duty conduit complete to the satisfaction of the bank. (BRANCH + ATM)</p>	JOB	1		
B	<p>UPS Power Input System: SITC of 4way TPN Double door Db IP 42 horizontal Complete with 1no. Incoming 32A. TP MCB and 3 x 32A 2P MCB's to regulate supply for UPS complete in all respect as required and to the satisfaction of the bank.</p>	Set	2		

C	Wiring for UPS Input & UPS Output (For both Critical 2Kva & Non- Critical 3Kva UPS) with 2x4.0sq.mm + 1x 1.5sq.mm stranded Cu. conductor (Finolex /Anchor /Skytone) to be laid in 19mm PVC pipe heavy duty/ Flexible pipe laid & concealed in wall/ floor/ panelling/ partitions or above false ceiling as per requirement. The rate should include the cost of all materials, labour, T&P, taxes & levies, scaffolding, shifting of furniture, carting away the debris and cleaning the floor etc.The job shall be complete & to the entire satisfaction of the Bank. (BRANCH + E-LOBBY)	JOB	2		
D	S/F of 32A 2P MCB in 2way metallic box including proper connectionbs thru lugs. Both the Db's shall be inter looped- Qty included in item 3. (2nos. For ATM and 2nos. For Branch)	Each	4		
E	UPS Output Power Distribution System: SITC of 12 way SPN Db Double door IP -43 Siemens make with 32A DP 10kA MCB and 09 nos. SP 10kA MCB complete in all respect and as required & to the satisfaction of the bank. Siemens/ L&T/ MDS/ Schneider	Set	2		
F	Input Wiring for UPS Db's with 2x4.0sq.mm + 1x 1.5sq.mm stranded Cu. conductor (Finolex /Anchor /Skytone) to be laid in 19mm PVC pipe heavy duty/ Flexible pipe laid & concealed in wall/ floor/ panelling/ partitions or above false ceiling as per requirement. The rate should include the cost of all materials, labour, T&P, taxes & levies, scaffolding, shifting of furniture, carting away the debris and cleaning the floor etc.The job shall be complete & to the entire satisfaction of the Bank. (BRANCH + ATM)	JOB	1		

G	Supply & fixing of 3nos. 6A switches 1 module & 3nos. sockets 2modules Modular type complete with GI Box, Cover plate etc. The work shall also include for cutting chase for conduits and moulded boxes, if required, in the wall/ floor/ panelling/ partitions (Without damaging the building/wall) & finally finishing the surface & matching the same with the existing surface.The job shall be complete & to the entire satisfaction of the Bank. & include Wiring for computer terminal points with 3 x 1.5sq.mm Fire Resistant Low Smoke Halogen stranded Cu.wires to be laid in 20mm OD PVC conduit or 1" vertical drops heavy duty laid & concealed in wall/ floor/ panelling/ partitions or above false ceiling as per requirement. -From UPS - SPN Db - circuits for computer stations	Per Node	10		
<b>5 MAIN INCOMING PANEL &amp; DISTRIBUTION</b>					
A	SITC of 100A Kit kats fuse unit 3nos in wooden patra complete with 100Amp. Neutral link complete in all respect as required.	Set	2		
	1 No for Metre				
	1 no for Panel to Outer Side Of Wall (For Generator Connection)				
B	Main Incoming Panel				
	Supply, Installation, Testing & Commissioning of main distribution board panel fabricated of 18swg (powder coated) comprising of	Nos.	1		
	Indicator lamps 3 nos.				
	Voltmeter & ammeter(one each)				
	Rotary selector switches 2 nos for voltmeter & ammeter				
	Busbar (each of RYB +N) copper 100 amp each				
	125 Amp MCCB(Siemens/ L&T/ ABB/ Schnider) incoming 3P adjustable 25kA				
	Changeover TPN 100 amp for DG set (Havells/ ABB/ Sochomac)				
	Outgoing 63A 3P MCB's - 6 nos.				
	Outgoing 32Amp 2P MCB's - 6 nos.				
	Earth bus bar 25x5mm GI strip - 2nos. At the bottom.				

6	Supply Installation testing & commissioning of <b>XLPE insulated</b> Armoured Al.codutctor cable between main panel & DB's & generator of required thickness of approved make Skytone/ Havells based on the load assessment & confirmation of the same with architect. This rates include cost of lugs at both the ends (Branch +ATM )				
	3.5 x50 sq.mm cable from Meter to Kit kat to the main panel (Branch +ATM ) (Aprrox - 15 mtr )	JOB	1		
	4c x20 sq.mm cable from Main Panel TO LHS DB (Aprrox - 20 mtr)	JOB	1		
	4c x 20 sq.mm cable from Main Panel to RHS DB (Aprrox - 20 mtr)	JOB	1		
	4c x 20 sq.mm cable from Main Panel to Kikat (Generator) ( Aprrox - 20 mtr)	JOB	1		
7	Supply, installtion, testing & commissioning of VTPN Db double door with MCB as incomer IP 42 complete in all respects for AC, PP and L & F as under - Siemens/ Hager/ Lagrand/ABB				
A	RHS 6way VTPN db - Loaction RHS wall opposite Cash cabins (From entrance to Rear record room & Toilet area) - Siemens 8GB0406VRC or equivalent				
	Incomer - 63A 3P MCB 10kA adjustable neutral to be directly connected to neutral bus	Each	1		
	3no. 32A 1P-MCBs 10 KA - AC's - 2nos. RHS & 1rear				
	3no. 16A 1P-MCBs 10 KA - for single power points - 2 cash & 1 May I help You & 2nos. D/W				
	4nos. 10A 1P-MCBs 10 KA for L&F				
	4os. 6A 1P-MCBs 10 KA for L&F				
	Blanking Plates - 2no.				
	All connections to be terminated thru lugs				
B	LHS 6way VTPN db - Loaction LHS wall behidn advance (From LHS LV Cash to Mgr Rm)- Siemens 8GB0406VRC or equivalent				
	Incomer - 63A 3P MCB 10kA adjustable neutral to be directly connected to neutral bus	Each	2		
	4o. 32A 1P-MCBs 10 KA - AC's - 3nos. LHS & 1 Mgr Rm				

	4no. 16A 1P-MCBs 10 KA - for single power points - ( LV cash, 2 CRE, 1Advance, 2 MR & 2 Router)				
	2nos. 10A 1P-MCBs 10 KA for L&F				
	2os. 6A 1P-MCBs 10 KA for L&F				
	Blanking Plates - 2no.				
	All connections to be terminated thru lugs				
8	Glow sign Board - Circuit wiring with 2x2.5sq.mm + 1x 1.5sq.mm stranded Cu. conductor (Finolex/Anchor/Skytone) to be laid in 20 mm PVC pipe heavy duty laid & concealed in wall/ floor/ panelling/ partitions or above false ceiling as per requirement. The rates should include the cost of all materials, labour, T&P, taxes & levies, scaffolding, shifting of furniture, carting away the debris and cleaning the floor etc.The job shall be complete & to the entire satisfaction of the Bank.	JOB	1		
	<u>E -EARTHING</u>				
9	S/burying of Dual pipe technology (Pipe in Pipe) earthing electrode having GI 80mm O/D pipe with 25 micron coating, 3metres long. The space between two pipes to be filled with Highly conductive & Non corrosive chemical compound. The installation shall be thru earth auger. The vacant space between pipe & hole shall also be filled with compound all around. The job also includes S/F of GI strip clamp with two holes (with SS/GI bolts & nuts) on the electrode & taking two earthing leads of 4mm dia copper wire (Assumed length of 20m - beyond 20m to be paid extra) upto Main panel complete in all respects with guaranteed E/N voltage of less than 2 volts and resistance less tahn 1 ohms. The 4mm dia Copper earth wire shall be terminated on a separate 6way earthlink. The connections for Panel earthing & earth bus in the panel should be taken from this earthlink. (1for power system &1 for UPS). The distance between two earthing pits to be 10ft or Supply & Fixing of 2 leads of 4mm dia Cu. wire on surface or in recess for loop earthing as required earthing to Db's or main panel.if required beyond 10mmore.including . Approx -80 mtr (2 FOR BRANCH & 1 ATM )	Per Icn.	2		
10	<u>F - FIXTURES &amp; FITTINGS</u>				

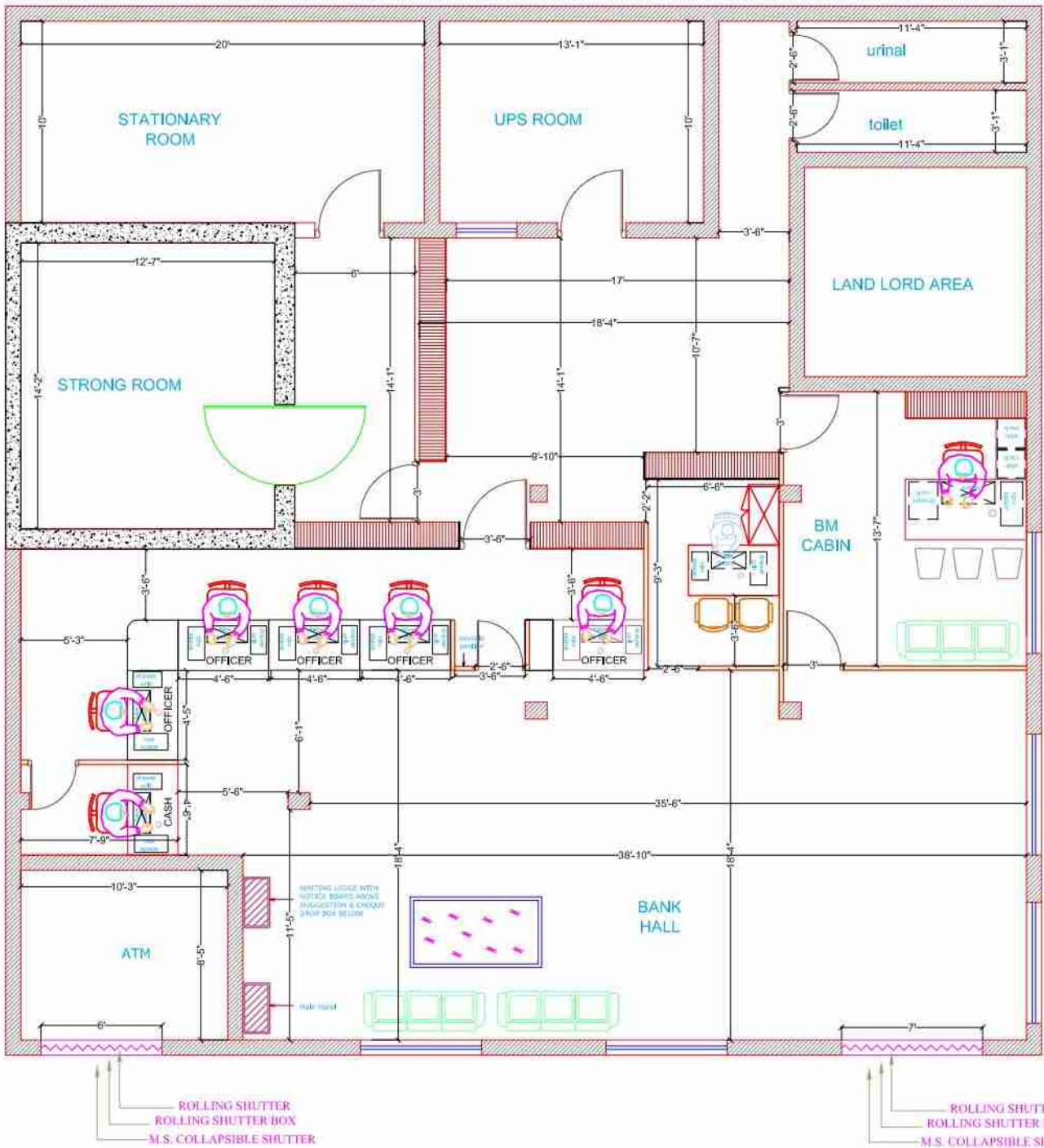


A	a) Supplying and fixing Philips make 36W LED FLAT PANEL after disconnection of existing fitting 2'x2' size in grid type false ceiling, 600x600 suitable for recess mounting, CRCA sheet, asthetic looking, or eqv Philips/havells	Each	12		
B	b) Supplying and fixing Philips make or eqv <b>10 W LED round type downlighter</b> (Philips/ wipro /Jaguar)	Each	20		
C	Supply installation testing and commissioning of 1*20watt Batten type tubular LED light fitting with LEDs, driver, diffuser, and housing complete in all respects in UPS room and record /wc/bath room /suitable place with complete in all respect with required color on need basis.	Each	10		
D	S/F of angle holder for bulbs including cost of 11w CFL lamp for Toilets	Each	4		
E	i) Supply & installation of wall bracket fan <b>450 MM Metel body</b> (Heavy duty/ high speed) Make Bajaj/crompton greaves/havells/Orient (to be supplied after consultation with architect/Electrical Engineer as per approved drawing)	Each	12		
F	g) Supply & fixing of the 1200 mm 48") Sweep Ceiling fan (Orient PSPO/crompton greaves/havells) with downward rod(below false ceiling), canopy etc. including of PVC flexible copper wire.(white colour)( High speed) (Warranty Certificate is necessary)with downward rod, circular boxes, ball sockets, ceiling plates,suitable arm bracket etc. including connection with wire)White colour (WITH REGULATOR)	Each	2		
G	Supply & Fixing of fresh air fan 12" - Crompton Greaves/ Usha/ Khaitan/ Bajaj	Each	3		
H	e) Supplying and fixing LED strip 3000 K <b>24 watt</b> 5 mtr length with driver (Philips or Havells or Cormpton )	SET	10		
11	<u>H - TELEPHONE</u>				
A	P/f Krone or equivalent box in the server room & out side of the Branch with a ten pair connecting strip for telephone with lock & key	Each	2		

B	10 Pair Cable with Connection from main Panel to entrance of the Branch	JOB	1		
C	Supply & fixing on wall/ furniture/ partition recessed type non modular telephone socket outlet (RJ-11) with mounting box & front plate complete with chase cutting, mending good etc. as required complete with Supply & laying of 2pair 0.61mm dia. PVC insulated telephone cables through 19mm dia rigid PVC conduit of suitable diameter as directed by the consultant from telephone junction box to telephone socket outlet including interconnection mending good etc. as required complete in all respects.	Each	5		
D	Wireless Call Bell of Approved Quality (Orient,Sunshine)	No.	1		
12	<u>I - DATA CABLING</u>				
A	Supply & Fixing of XL RJ 45 toolless information outlet with Duplex face plate with dual connectors Grey colour cat 6e including cost of supplying & laying CAT 6e (as directed by Architect from Server to Switch, Switch to computer I/O data socket as required complete in all respects) in 25mm dia rigid PVC conduit (including laying of GI draw wire complete with junction box, circular box, elbows, bends & other accessories as required by chase cutting on floor, wall, through partition or over false ceiling.The data cabling pipe should be laid at a minimum distance of 3ft from pipes laid down for power distribution) including interconnection with connectors as required complete in all respects.	Each	9		
B	Supply & fixing of 7ft Grey colour Patch chord Giga speed Systimax/ D link make	Each	9		
C	Supply & fixing of 3ft Grey colour Patch chord Giga speed Systimax/ D link make	Each	9		
D	S/F of 24Port Jack Panel fully loaded systimex make	Each	1		
E	S/F of 9 U wall mounted rack c/w fan etc as required	Each	1		

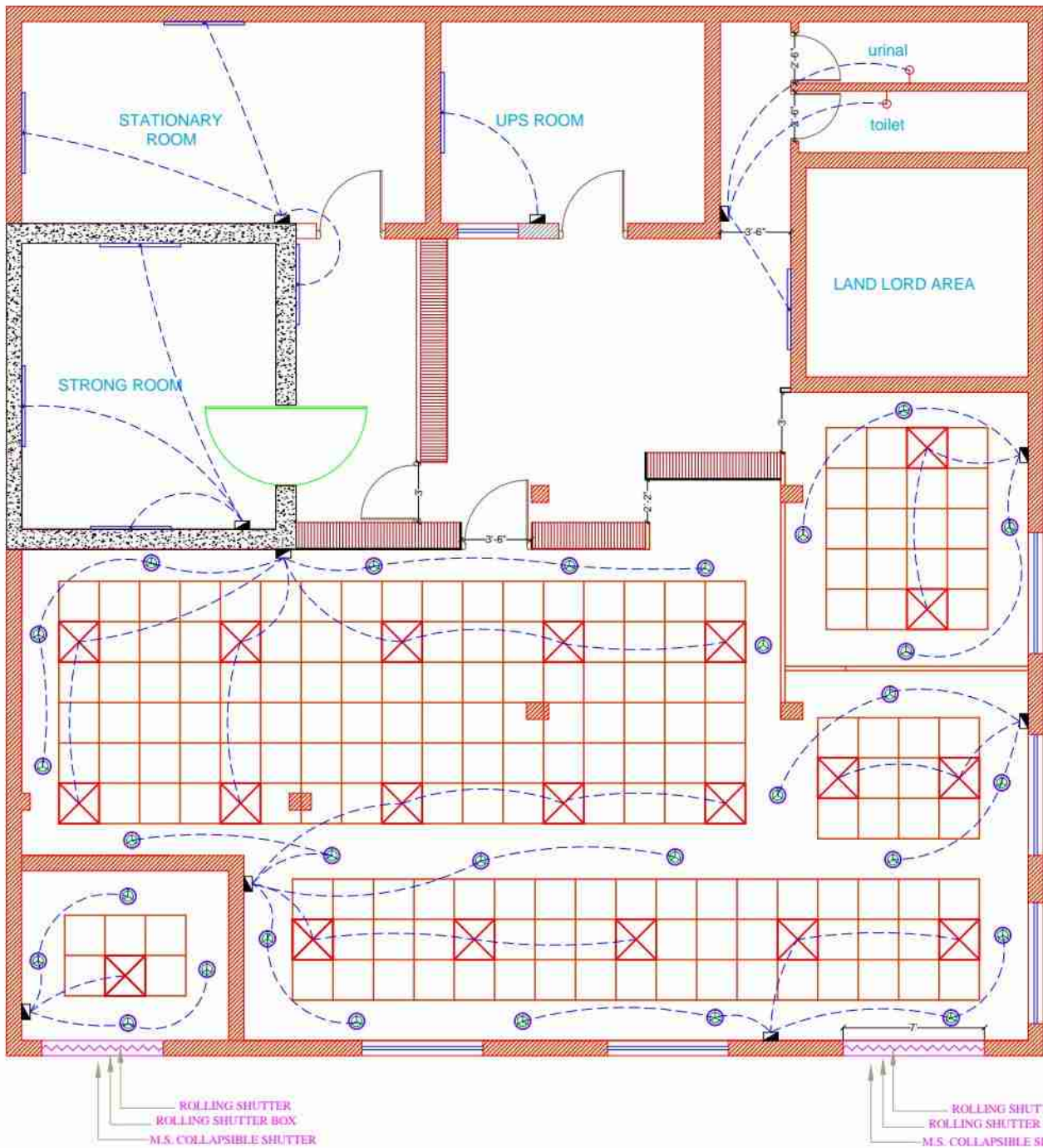
F	S/F of Cable Manager as required	Each	1		
<b>GRAND TOTAL AMOUNT (BRANCH )</b>					
	GST EXTRA				

<b>List of approved materials</b>				
<b>Materials</b>	<b>Approved manufacturers/suppliers</b>			
1	MCCB	MDS legrands, ABB, GE, SIEMENS		
2	Changeover	Indo Asian/ HPL Socomec / GE/ Standard stangaurd		
3	Distribution board	MDS / Standard / Indo Asian / HPL		
4	MCB	MDS / Standard / Indo Asian / HPL		
5	Cable	Gloster / Rallison / Incab / CCI		
6	Copper wire	Finolex/anchor		
7	Switch / Socket / Call bell and accessories	Anchor / Havells / CPL / MDS / Philips		
8	Electrical Light Fittings / Fixtures Complete	Philips		
9	Wall Fan / Ceiling Fan / Exhaust Fan	Khaitan/Havells		



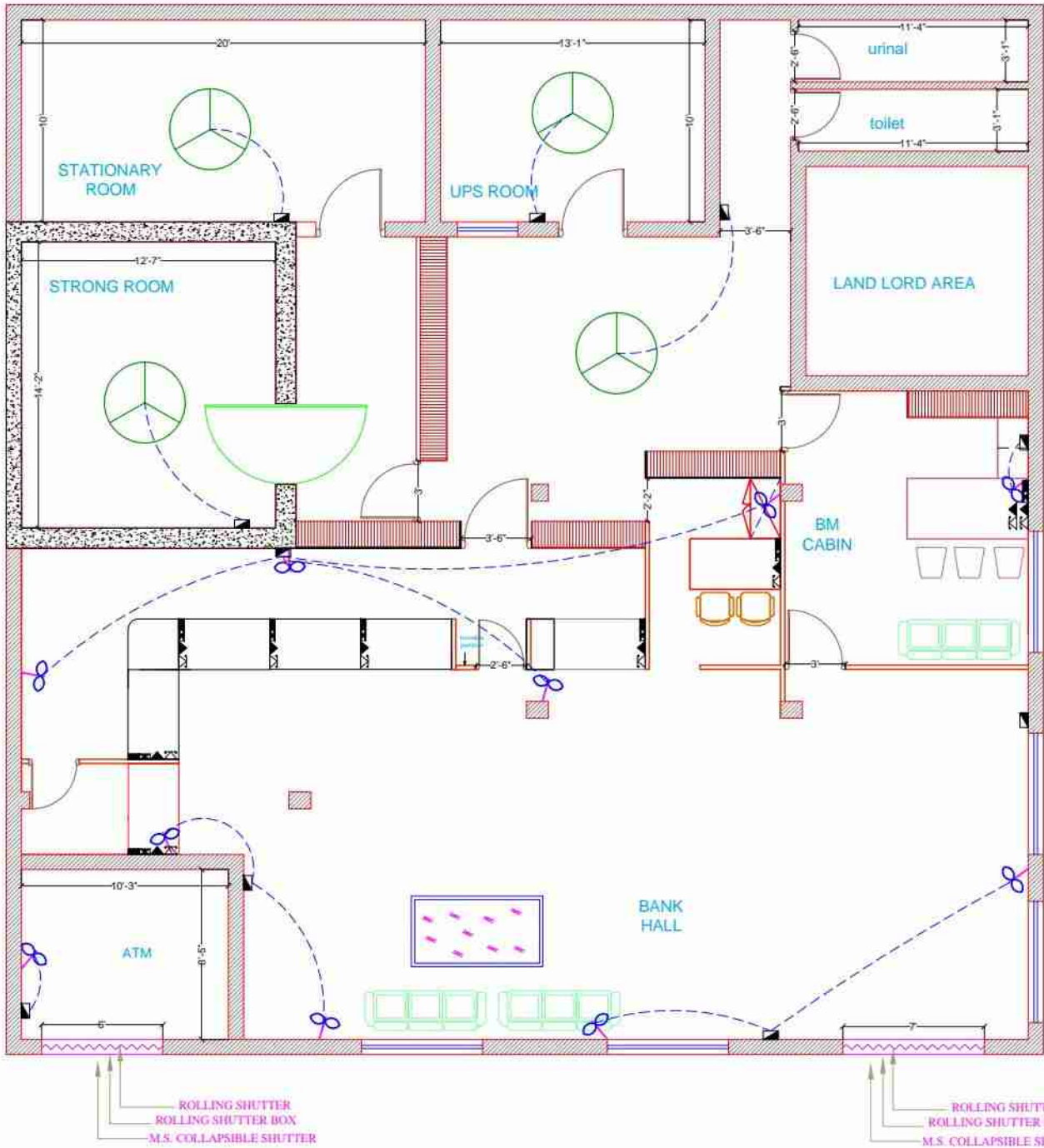
CARPET AREA = 2208.92 Sqft

PROJECT	TITLE	NORTH	ARCHITECT
PROPOSED LAYOUT PLAN FOR INDIAN BANK AT AMAR PATAN BRANCH. OPP.6	LAYOUT PLAN		<b>BHARAT AND ASSOCIATES</b> ARCHITECTS, ENGINEERS, INTERIOR AND LANDSCAPE DESIGNERS. Shop NO:-01, First Floor, Jeevan Plaza, Vram Khand:-5, Husarlya Crossing Gomti Nagar, Lucknow. Phone: 7572003101,7572003110
	DATE	DRAWN BY	
	17-10-2024		



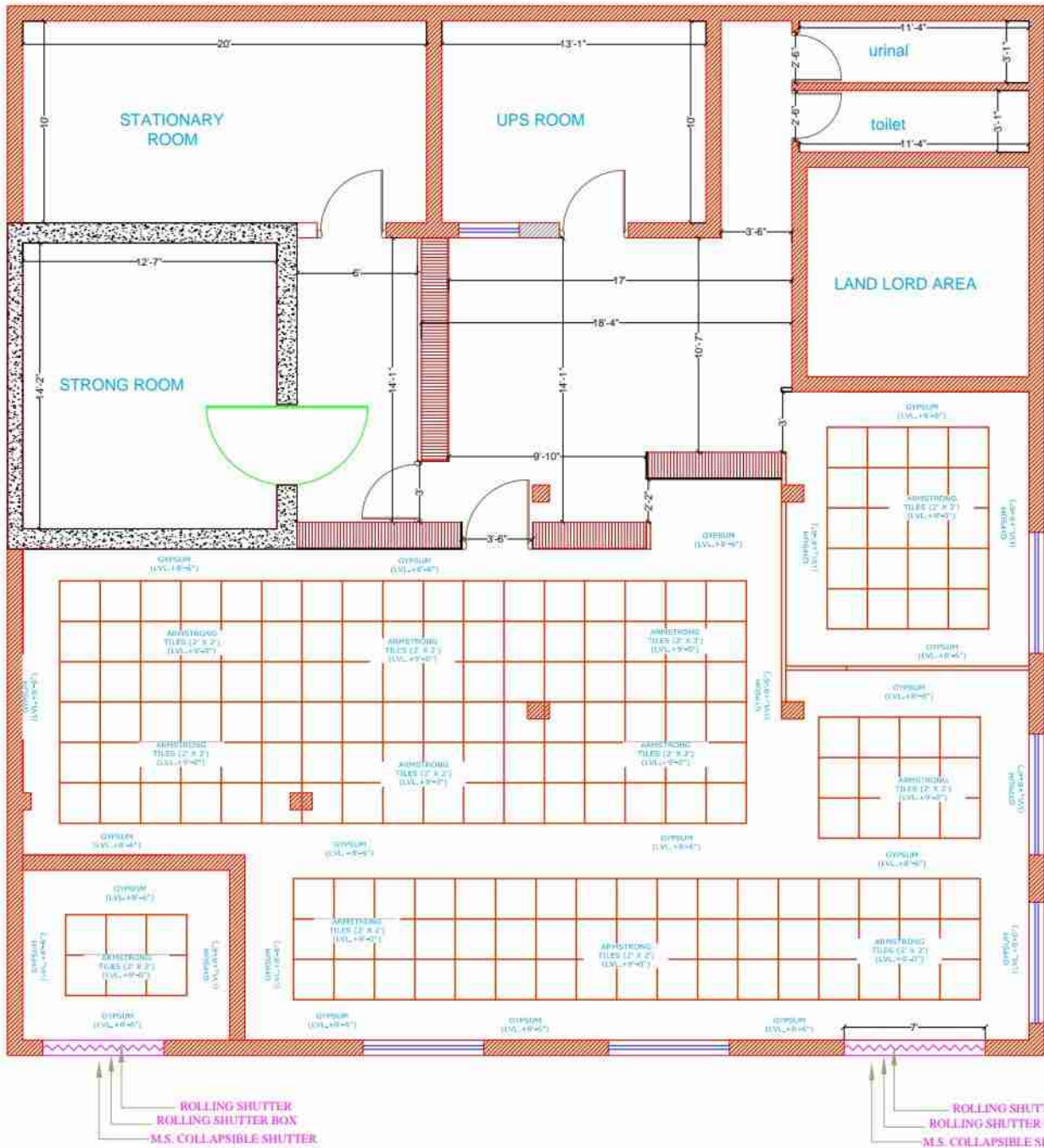
CARPET AREA = 2208.92 Sqft

PROJECT	TITLE	NORTH	ARCHITECT
PROPOSED LAYOUT PLAN FOR INDIAN BANK AT AMAR PATAN BRANCH. Light Point	LAYOUT PLAN	<b>N</b> ↗	<b>BHARAT AND ASSOCIATES</b> ARCHITECTS, ENGINEERS, INTERIOR AND LANDSCAPE DESIGNERS. Shop NO:-01, First Floor, Jeevan Plaza, Viram Khand:-5, Husariya Crossing Gomti Nagar, Lucknow. Phone: 7572003101,7572003110
	DATE	DRAWN BY	
	17-10-2024		



CARPET AREA = 2208.92 Sqft

PROJECT	TITLE	NORTH	ARCHITECT
PROPOSED LAYOUT PLAN FOR INDIAN BANK AT AMAR PATAN BRANCH. Fan & Data Point	LAYOUT PLAN		<b>BHARAT AND ASSOCIATES</b> ARCHITECTS, ENGINEERS, INTERIOR AND LANDSCAPE DESIGNERS. Shop NO:-01, First Floor, Jeevan Plaza, Viram Khand:-5, Husariya Crossing Gomti Nagar, Lucknow. Phone: 7572003101,7572003110
	DATE	DRAWN BY	
	17-10-2024		



CARPET AREA = 2208.92 Sqft

PROJECT	TITLE	NORTH	ARCHITECT
PROPOSED LAYOUT PLAN FOR INDIAN BANK AT AMAR PATAN BRANCH. False Ceiling	LAYOUT PLAN		<b>BHARAT AND ASSOCIATES</b> ARCHITECTS, ENGINEERS, INTERIOR AND LANDSCAPE DESIGNERS. Shop NO:-01, First Floor, Jeevan Plaza, Viram Khand:-5, Husariya Crossing Gomti Nagar, Lucknow. Phone: 7572003101,7572003110
	DATE	DRAWN BY	
	17-10-2024		

## INTERIOR FURNISHING

### APPROVED MATERIAL LIST:-

S.NO.	MATERIALS	BRAND NAME
1	Glass Plain / Mirror	Modi Flat / Saint Gobain / Aashi
2	Flush Door Shutter / Plywood / Laminate / Particle board	Green / Century /Duro
3	SS Hardware Fittings	Elbehari / Ebco/Hettich/Blum
4	Glue	Fevicol / Vemicol
5	Door Closure	Everite / Doorking / Garnish
6	Oil Bound Paint	Asian / Shalimar / ICI / Nerolac / Berger
7	Locks	Godrej / Harrison / Plaza
8	Roller Blind	Mac / Vista / Aerolux
9	False Ceiling	Armstrong / Gypsum India / Daiken
10	C.P. Fitting	Jaquar / Parko / Gem / Kingstone
11	Foam	MM Foam, U Foam
12	Cushion	MM Foam, U Foam
13	Vitrified Tiles / Ceramic Tiles	HR Johnson / Naveen / Euro / Somany / Orient
14	Drawer Unit	Godrej or approved equivalent design wooden
15	Modular Furniture	Godrej, Feather lite, B.P. Ergo, PSI
16	Aluminium section	Mann, Jindel
17	Floor Spring	Godrej / Hyper



APPROVED LIST OF ELECTRICAL MATERIAL

Description	Brand
M.C.B. / RCCB / RCBO	POLYCAB / ABB/HAVELLS
Distribution Boards	LEXIC / HAGER / ABB
Switch Fuse Units With HRC fuses	GE / L&T / ABB
Moulded Case Circuit Breaker (MCCB)	ABB (T max) / L & T (D sine)
Air Circuit Breakers	ABB (EMEX/L&T(C POWER)
Change Over Switches	GE / L&T / HH ELCON
Cable Glands and Sockets	SIEMENS
PVC insulated Copper conductor wires	FINOLEX / RR / POLYCAB
Telephone Wires and cables	FINOLEX / (RPG/BIRLA ERRICSON POLYCAB
Television Coaxial cable	FINOLEX / RR /RPG / L&T
PVC / XLPE Insulated 11 KV / 1.1 KV Cables	NICCO/ FINOLEX/ POLYCAB
Switches and Sockets outlets (Conventional piano type)	MK / ANCHOR
Switches and Sockets outlets (Modular type)	MK / ANCHOR
Industrial outlet	LEXIC / HAGER / ABB
MIS Conduits and Accessories	B.E.C./AKG/MK
PVC Conduits and accessories	AKG/BEC/CAP/SEIKO / [POLYCAB
Fluorescent/ LED Tube Fitting	PHILIPS /Havells
Incandescent/ LED Light Fitting	PHILIPS / BAJAJ/Havells
Hpmv/hpsv/ halogen Lamp	PHILIPS / WIPRO
Wall Fans/ Ceiling Fans / Exhaust Fans	CROMPTON / BAJAJ
Floor / Wall Raceways to date	MK/ LK/ MDS
Computer networking - outlet	AMP/SYSTEMAX / LUCENT
Electronic Energy Meters	SECURE / L&T
UPS	EMERSON / POWERWARE / TATA LIBERT
Ceiling Rose holders	ANCHOR
Buzzers/Bell Push bell	ANCHOR
MCB Distribution Board	MOS/LEGRAND/SIEMENS /HAGER
HRC Switch Fuse nits	SIEMENS ABB/GE/L&T
Cable Glands/Lugs	SIEMENS/DOWELLS
Electronic Regulator	MK/ ANCHOR/ROMA/DEGRAND/MDS