

1

PROJECT - ESTIMATE FOR FURNISHING WORKS.				
BANK - INDIAN BANK				
BRANCH - VINDHYACHAL				
*ALL ITEM TO EXCLUSIVE OF TAXES . Taxes to Mentioned By the Contractor.				
*ALL WORKS TO BE DONE AS PER TENDER CONDITIONS.				
S.NO.	DESCRIPTION OF ITEM	UNIT	QUANTITY	AMOUNT (Rs.)
1.0	SUSPENDED FALSE CEILING			
1.1	GYPHUM FALSE CEILING WITH COVE			
1.0	Providing, fabricating and erecting in position totally flushed suspended false ceiling with 12.0mm thick Gypsum board, fixed to a metal frame work comprising of ceiling channel of size 80mmx26mmx0.5mm @ every 457cm centre, inter channel 45mmx15mmx0.9mm @ every 1220 cm centres, peri-meter channel 20mmx26 mm all along the wall/partitions, strap hanger suspenders 25mmx0.5mm with nuts and bolts 6.4mmx12.7mm, connecting clips 2.6mm thick, dry walls screws 25mm long, soffit cleats 27mmx37mmx25mmx1.6mm thick and dash fastenes / rawl plugs 12.5 mm diax35mm long with 6mm dia bolts etc. complete with recommended fillers, paper tapes and applying two coats of acrylic emulsion paint of approved shade and make over a coat of primer including making necessary cut outs for light fittings/ ACs etc. complete as per manufacture's specifications. (Quantity as per layout plan/site requirement)	Sqft	460.00	
1.2	FALSE CEILING (ARMSTRONG CEILINGS - FINE FISSURED MICROLOOK EDGE WITH SILHOUETTE GRID (BLACK REVEAL))			
	Providing and fixing false ceiling system manufactured by M/s. Armstrong World Industries using hot dipped galvanized steel section, rotary stitched main tee of size 15mm x 42 mm web height, having 0.36 mm gauge at every 600 mm centre to centre maximum and rotary stitched cross tee of size 15 mm x 42 mm, having 0.33 mm gauge at every 600 mm. c/c. and wall angle of size 19 x 19 mm., having 0.35 mm gauge fixed to the periphery of the wall. The above grid is suspended at every 600mm c/c. in both directions using 2.0 mm. thick pre-straightened GI wire laying FINE FISSURED MICROLOOK WITH SILHOUETTE GRID(BLACK REVEAL) ceiling tiles manufactured by M/s. Armstrong World Industries, of size 600mmx600mmx15mm having NRC 0.55, Light reflectance of >84% (WT), thermal conductivity k = 0.052-0.057 W/m0K, Humidity Resistance of 99% , having Fire Performance CLASS O / CLASS 1 (BS 476), surface having 3 coats of white paint with Fine Fissured, back of the tile duly sanded and finished with a coat of protective paint.	Sqft	558.00	
2.0	WALL PANNELLING & COLUMN ENCASING			
	Supplying and erecting Wall paneling / Column encasing (up to false ceiling) as per drawing and design and conforming to the following specifications : Basic frame work: Framing shall consist of Heavy duty Aluminum Box Sections 50mm x 50mm x 2 mm thick @ 600mm c/c both ways Horizontally and Vertically. The vertical alternate frames to be fixed to the ceiling with necessary fixtures. Vertical members shall be suitably anchored at ceiling level to ensure rigidity. Skin membrane : 9 mm thick BWP grade plywood on face. Finishing : 1.0mm thick laminate sheet of same or combination shades with grooves as per instructions. Skirting: 100mm high laminate of approved make & shade all as directed. Top Border: 150mm high laminate of approved make & shade all as directed. Note: Quoted rates shall include all necessary materials, accessories and labour and also for making provisions for electrical/telephone/computer wiring, conduits and switch boxes, etc. where ever required. (quantity/location should be restricted only to the central pillars in Banking hall/to hide electrical pipes/AC drain pipes/any prime location)	Sqft	650.00	
3.0	PARTITIONS			
3.1	CASH CABIN PARTITIONS : Supplying & Erecting full height solid cash cabin partitions (upto false ceiling as per following specifications : Basic frame work: Framing shall consist of Heavy duty Aluminium Box Sections 50mm x 50mm x 2 mm thick @ 600mm c/c both ways Horizontally and Vertically. The vertical alternate frames to be fixed to the ceiling with necessary fixtures. Vertical members shall be suitably anchored at ceiling level to ensure rigidity. Skin membrane: To be finished with 12 mm thick BWP grade plywood on each face with grooves, as per drawings/ instructions. Finishing: 1.0mm thick laminate of same or combination shades with grooves in both faces as per instructions. Skirting- 100mm high laminate of approved make & shade all as directed. Top Border: 150mm high laminate of approved make & shade all as directed. It shall have decorative aluminum grill (from 1200mm to 2100mm) fixed with teak wood beading (size - 30mm x 20mm, as per profile) with melamine finish. The job shall also include for provision of laying conduits, switch boxes etc. The erection of partition shall include for expansion bolts cleats, clamps bolts, nuts, screws, rivets and other accessories, all complete up to the satisfaction of the Architect. All door opening shall have rebated teak wood framework (size - 75mm x 50mm, as per profile) on vertical (2 Nos.) and horizontal (1 No.) sides, with melamine finish and rebate of 40mm x 12mm, all complete up to the satisfaction of the Architect. Quoted rates shall include all necessary materials, accessories and labour and also to make provisions for electrical / telephone / computer wiring conduits and switch boxes, etc. [Materials for wiring, conduits, switches etc. shall be separately paid for]	Sqft	210.00	



3.2	<p>Supplying and erecting full height partly glazed / unglazed partitions as per following specifications: Basic frame work: Framing shall consist of Heavy duty Aluminum Box Sections 50mm x 50mm x 2mm thick @ 600mm c/c both ways Horizontally and Vertically. The vertical alternate frames to be fixed to the ceiling with necessary fixtures. Vertical members shall be suitably anchored at ceiling level to ensure rigidity. Exposed frame members in the glazed portions shall have wider spacing (approx. 1200 mm) and be finished with 1.00 mm thick laminate of same or combination shades, over 6mm BWP grade ply. Skin membrane: (Opaque portion up to 900mm from floor level and from 2100mm to ceiling, finished with 12 mm thick BWP grade plywood on each face with grooves, as per drawings/ instructions. Finishing: 1.0mm thick laminate of same or combination shades with grooves as per instructions. Glazing: 12mm thick clear float glass fixed with polished teak / steam beech wood glazing beads of approved shape (finished 12 x 25mm). Skirting- 100mm high laminate of approved make & shade all as directed. Top Border: 150mm high laminate of approved make & shade all as directed. Quoted rates shall include all necessary materials, accessories and labour and also to make provisions for electrical / telephone / computer wiring conduits and switch boxes, etc. (Materials for wiring, conduits & switches etc. shall be separately paid for)</p>	Sqft	175.00		
3.3	<p>Supply and erecting low height opaque partitions (up to maximum 1200mm height) conforming to the following specifications : Basic frame work: Framing shall consist of Heavy duty Aluminium Box Sections 50mm x 50mm @ 600mm c/c both ways Horizontally and Vertically. The vertical alternate frames to be fixed to the ceiling with necessary fixtures. Vertical members shall be suitably anchored at ceiling level to ensure rigidity. Skin membrane: 12 mm thick BWP grade ply on each face up to 900mm height. Glazing: 12mm glass in remaining portion. Finishing: 1.0-mm thick laminate of same or combination shades with grooves as per instructions. Edge moulds: All free top/ end surfaces shall have polished teak / steam beech wood moulds of approved shape (from 18 x 50mm sections). Skirting- 100mm high laminate of approved make & shade all as directed. Quoted rates shall include all necessary materials, accessories and labour and also allow provisions for electrical / telephone/computer wiring, conduits and switch boxes, etc. (Materials for wiring, conduits and switch boxes shall be separately paid for.)</p>	Sqft	55.00		
3.4	<p>Supply and Erecting Bison Panel Board Partition & Door for UPS area. The framework shall consist of Aluminium Box Section as per the specifications mentioned above. The framework shall be than covered with 8mm thick Bison Panel on both the sides and also in the external periphery of the framework. A glass panel of 9" x 2'6" shall be provided at eye level on the door with necessary framework, sections, beadings, etc. All external surfaces of the Bison Panel shall be covered in 1 mm thick laminate of approved shade. The door shutter will have required hardwares such as heavy duty Fire Resistant door closer, locks, hinges, etc. All in SS Brush Finish.</p>	Sqft	0		
4.0 COUNTER & WORK STATIONS					
4.1	<p>Providing and erecting in position Cash Work Station of approx. size 1370x900x750mm (4.5'x3.0'x2.5'), made of 19mm thick block board pasted with 1.00mm laminate inclusive of a 350mm wide customer top at 1155 mm level. Writing top & customer top should be finished with mirror polished; 18mm thick granite slab (Jet black or shade as directed by Bank's Engineer) with rounded edges and sides with 1.0mm thick laminate of approved shade/make. Both should have sufficient gap in between to accommodate computer monitor up to full depth. The workstations shall be supported from the partition system made of 19mm thick BWP grade block board finished with 1.00 mm thick laminate of approved shade/make. Free edges shall have 18 mm thick, polished white or steam beach wood moldings of half-round profile as per drawings and instructions and 100mm high laminate of approved make & shade all as directed. Each cash workstation shall comprise of the drawer unit, Tea tray at top, Cash drawers with approved telescopic channels for drawer-slides, automatic locks (keys in duplicate), wire managers, space for computer CPU, modesty panel and other necessary hardware and accessories including satin finish S. S. handles of approved quality. Inner face of cash counter to be provided with 16G, M.S. sheet, painted with two coats of synthetic enamel paint of approved shade & make, over a coat of approved steel primer. Inner faces shall be painted with two coats of synthetic enamel paint of approved shade & quality over a coat of primer. Skirting: 100mm high laminate of approved make & shade all as directed.</p>	Rft	10.00		
4.2	<p>GLASS BARRIER ON CASH CABIN / OFFICER COUNTER Providing & fixing 12mm thick clear float glass on Cash Counters at front & sides, with S S clamps/patch fittings, necessary polished beadings etc complete all as directed by the Bank. Note: Front glass to be fixed in slanting position towards inside cash area with required angle as directed. Above glass to be fixed either in two pieces. Lower piece having one semi-circular/rectangle 6" dia/long opening at customer top level & other piece to be fixed at suitable height making 3" slit for conversation with customer. In this case, only glass area to be measured for payment purpose.) In case of single piece, one semi-circular/rectangle 6" dia/long opening at customer top level & one circular hole of required dia at suitable height for conversation at centre of cash counter to be provided.</p>	Sqft	62.00		
4.3	<p>ALUMINIUM JALI ON CASH CABIN TOP Providing and fixing of aluminum grill with square size 75mm x 75mm - 8mm, on top of the cash cabins etc. The grill shall be tightly stretched and nailed to a wooden frame work, made out of 50mm x 40mm teak/hard wood (with anti-termite) members at 750mm c/c approx. both ways or as per site conditions. The erection of framework shall include for expansion bolts cleats, clamps bolts, nuts, screws, rivets and other accessories. All teak wood surfaces shall be painted with two coats of synthetic enamel over one coat of primer. The rate shall include cost of all materials, labour, T&P, wastages, etc. required for proper completion of work, all complete to the satisfaction of the Bank.</p>	Sq.Ft.	75.00		



4.4	<p>OFFICER COUNTERS / LOW LEVEL COUNTER Supplying and erecting counters (running tables) 915 mm wide and 750mm high including drawer-cum- cabinet unit for files, space for computer CPU, wire managers, modesty panel, tea tray etc. made with 19 mm thick BWP grade block board on top and supporting sides / front with necessary well seasoned Malaysian Sal/ Kail/ Mirandi wood frame work. Writing top & customer top should be finished with mirror polished; 18mm thick granite slab (Jet black or shade as directed by Bank's Engineer) with rounded bevelled edges and sides with 1.0mm thick laminate of approved shade/make finished on sides with 1.0 mm thick laminate of approved shade and quality, including providing and fixing 450mm long key board tray of approved shade, hardware and accessories at each of the counter. All exposed edges of block board are to be provided with half round teak wood mouldings, duly polished and 100mm high laminate of approved make & shade all as directed. Customer Top will be raised by 6 inches to provide a box type formation in the front elevation. Inner faces shall be painted with two coats of synthetic enamel paint of approved shade & quality over a coat of primer. Skirting: 100mm high laminate of approved make & shade all as directed. Rate to include charges for brass hardware fittings as well as fixtures like sliding gear for drawers of 'Earl Behari' or equivalent approved make. (ELEVATION DESIGN OF COUNTER WILL BE PROVIDED BY ARCHITECT AS PER SITE CONDITION)</p>	Rft	25.00		
5.0	<p>DOORS :</p>				
5.1	<p>Supplying and fixing in position overall 32 mm thick solid core hot pressed phenol formaldehyde bonded flush door finished with 1.0 mm thick laminate of approved shade and quality on both sides of the door shutter & beading on edges including cost of hardware fittings e.g. Godrej night latch / mortise lock, hinges, door closure, handles etc. of approved make and quality. (CASH CABIN) . Please note that the price must include providing and fixing aluminum grill with square size 75mm x 75 mm in the door as per Bank's instructions with grill tightly stretched and nailed to wooden framework along with steam beach wood beads of approved design complete for Cash Cabin Door as per Bank's instructions</p>	Sqft	42		
5.2	<p>Supplying and fixing in position 32 mm thick solid core hot pressed phenol formaldehyde bonded partly glazed flush door shutter of approved make finished up to 900 mm from floor level with 1.00 mm thick laminate of approved quality on both sides of the door shutter & beading on edges. The upper portion of the shutter is to be provided with 12 mm thick clear float glass fixed with white or steam beech wood glazing beads of approved design, complete as per drawing. Rate to include cost of hardware fittings e.g. mortise lock, hinges, handles, door closer etc. of approved make and quality. (BM CABIN DOOR / PASSAGE DOOR / STR ROOM PASSAGE DOOR)</p>	Sqft	42.00		
5.3	<p>FLAP DOOR Providing and fixing Flap Door of min. size: 3' (B) X 2'6" (H) made of block board with approved lamination on both side, of required size with hinges/tower bolts/stopper/handles etc complete.</p>	Sqft	15.00		
5.4	<p>ENTRANCE DOOR - TOUGHENED GLASS DOOR WITH FIXED GLASS PARTITION & ETCHING WORK (2 UNITS) (DOUBLE DOOR IN EACH UNIT) Providing fabricating & fixing in position twin -style door at Main Entrance made of 12mm thick clear toughened glass (MODI / ST. GOBAIN) in single piece with computerized diamond cut and edge polish pencil edges all around including making required cut holes for lock, handles, pivot patch fitting, corner fitting, hinges, etc. Glass should be fixed in S.S finished D-Brackets, etc. Wherever required with metal patch fittings at Top / Bottom / Corner / profile section for fixed glass as approved by Bank Authorities for Door Shutter. For Glass Partition wherever required if any, the glass panels can be bolted together with stainless steel stub post which are into concrete through core drill holes or supported by stainless steel clamp fixing to vertical posts on each side as per requirement at the site with necessary bevelling etc. complete fixed on floor spring of Ozon / Dorma / Godrej Make (ISI Mark & Heavy Duty). The Door Shutters shall have C - shaped Stainless Steel Handle (18" or 24" as directed) on both the door and both the sides of approved make with erection, finishing, etc complete. The fixed glass partition are to be fixed by providing profile section @ Top & Bottom . The entire glass partition is to be finished with one way film, bank logo or as per Bank's Requirement.</p>	Sqft	130.00		
6.0	<p>OTHER ITEMS</p>				
6.1	<p>LOW / FULL HEIGHT STORAGE CABINET P/F in position 450mm deep storage full ht./low ht.cabinets having sides partitions,shelves & shutters,fabricated out of 19mm BWR & 6mm th.BWR Plywood back,with all exposed surfaces & inside of shutters/internal base of drawers to be finished with 1mm thick laminate i/c 31x31mm rounded steam beech wood moulding & 6x19mm steam beech wood edging on edges of comm.board as/arch.drg.complete with shelves,shutter,drawers etc.i/c P/F necessary hardware telescopic channels for drawers of Hettich,S.S.piano hinges as/appvd.sample,Hettich handles(as/appvd.sample)in all drawers & shutters,locking arrangement,75mm brass tower bolts,Hettich locks in all shutters & drawers,magnet catcher,painting the exposed internal surfaces of block board with 2-3 coats of synthetic enamel paint with melamine finish on wood surface with 6mm comm.ply at rear as per arch.drg.& as per site requirements the rate should include 19mm th.pre-polished Granite Stone (Asian Quartz) as per approved sample with half round bevelled edge complete on low ht.storage cabinets.</p>	Sq.Ft.	50.00		
6.2	<p>MAIN PANEL BOXING</p>				
6.2	<p>Providing and fixing 1'4" deep electrical panel cabinet. The basic structure of cabinet includes dividers and shelves made up of 18 mm thick Bison panel sheet. It shall have openable shutters with louvers and shall be made with 2" x 1" x min 1.8mm thick aluminium section framework covered with 6mm bison panel sheet on all sides with 16 Gu.powder coated perforated S.S. Sheet as infill material. It will have 1mm laminate on outside surface as per Architect & Bank's Instructions. The entire unit shall finish with paint on internal surface. The rate includes all the hardwares, labour, scaffolding, etc complete</p>	Sq.Ft	55.00		
6.3	<p>ACP PANNELING ON FRONT / ROLLING SHUTTER COLUMN & ATM</p>				
6.3	<p>Providing and fixing in required position 4mm thick exterior grade Aluminium Composite Panel in Ceiling and Vertical Cladding or as per requirement and directed by Bank's Engineer or Architect over a framework made out of 50 x 50 x 2 mm aluminium SHS anchored to existing M.S Structure including installing the composite panel in grid pattern of 2' x 2' or of required size as directed with the help of aluminium cleats / angles of size 1" x 1" and striking out joints with weather silicon. The rate shall include cutting of panels, its bending, cutting for providing down lighters, providing opening for operation of rolling shutters, labour, scaffolding, etc complete</p>	Sq.Ft	430.00		



7.0 FIXTURES		No.	1.00		
7.1	<p>BRANCH MANAGER TABLE WITH SIDE CREDENZA INCLUDE 12mm THICK GLASS:- Providing and placing in position tables with top, vertical sides/dividers, skirting and modesty panel made out of 19mm thick water proof board with 1mm thick laminate (as/shade approved by the Architect) on all exposed surfaces. It shall also have 75mm x 40mm teak wood runners below the top and for footrest below. Every table shall be provided with a side unit (size - W-500mm, H-750mm, D-500mm approx.), consisting of 150 mm deep drawer at top and a cabinet with open able/hinged shutter below. The facia of drawer and shutter of cabinet below shall be made out 19mm thick water proof board with 1mm thick laminate (as/shade approved by the Architect) and sides and bottom of drawer shall be made out of 12mm thick water proof ply. The side unit shall have CAM locks, handles, guides, sliding units, hinges, magnetic catcher's etc. of approved make. Every table shall be provided with a pedestal unit (size - W-550mm, H-720mm, D-450mm approx.) below. The table shall have 100mm deep facia, below the top, in which keyboard drawer unit shall be adjusted. It shall be made out 19mm thick water proof board with 1mm thick laminate (as/shade approved by the Architect) and sides and bottom of drawer shall be made out of 12mm thick water proof ply. The unit shall have CAM locks, handles, guides, sliding units etc. of approved make. The job shall include for 6mm x 6mm grooves in between sides and open able drawers and hinged shutters. All the exposed edges of water proof board and ply shall be provided with 6mm thick teak wood/hard wood lipping. All teak wood surfaces shall be melamine polished and other internal surfaces shall be painted with two coats of synthetic enamel over one coat of primer, all complete to the satisfaction of the Architect. Every table top shall be provided with 12 mm thick float glass (as per profile) with polished and beveled (25mm wide) edges all complete to the satisfaction of the Architect.</p>	No.	1.00		
7.2	<p>OFFICER TABLE WITH SIDE CREDENZA INCLUDE 12mm THICK GLASS:- Providing and placing in position tables with top, vertical sides/dividers, skirting and modesty panel made out of 19mm thick water proof board with 1mm thick laminate (as/shade approved by the Architect) on all exposed surfaces. It shall also have 75mm x 40mm teak wood runners below the top and for footrest below. The facia of drawer and shutter of cabinet below shall be made out 19mm thick water proof board with 1mm thick laminate (as/shade approved by the Architect) and sides and bottom of drawer shall be made out of 12mm thick water proof ply. Every table shall be provided with a pedestal unit (size - W- 465mm, H-720mm, D-450mm approx.) below. The table shall have 100mm deep facia, below the top, in which keyboard drawer unit shall be adjusted. It shall be made out 19mm thick water proof board with 1mm thick laminate (as/shade approved by the Architect) and sides and bottom of drawer shall be made out of 12mm thick water proof ply. The unit shall have CAM locks, handles, guides, sliding units etc. of approved make. The job shall include for 6mm x 6mm grooves in between sides and open able drawers and hinged shutters. All the exposed edges of water proof board and ply shall be provided with 6mm thick teak wood/hard wood lipping. All teak wood surfaces shall be melamine polished and other internal surfaces shall be painted with two coats of synthetic enamel over one coat of primer, all complete to the satisfaction of the Architect. Every table top shall be provided with 12 mm thick float glass (as per profile) with polished and beveled (25mm wide) edges all complete to the satisfaction of the Architect. Approx Size : 1372 x 750 x 750 mm (4.6'x 2.5'x 2.5')</p>	No.	1.00		
8.0 MISCELLANEOUS ITEMS					
8.1	SLIP & CUSTOMER WRITING DESK	No.	2.00		
	<p>Providing and fixing in position (with rear wall) slip and customer writing desk (as per design) of overall size - 1200mm x 450mm x 300mm. The fixing shall include for expansion bolts, cleats, clamps, bolts, nuts, screws, rivets and other anodized accessories, all complete up to the satisfaction of the Architect.</p> <p>The writing top and facia/sides shall be made out of 19mm thick water proof board with 1mm thick laminate (as per shade approved by the architect), on all sides and . It shall be laid over the base of 19mm thick water proof board (already considered in various items.) and fixed with araldite. It shall include for beveling and polishing at all the exposed edges. The rate shall include cost of all materials, labour, scaffolding, wastages, polishing and T& P etc. It shall be made out of 12mm thick water proof plywood (two surfaces of 6mm thickness, fixed together, where required) on rear and both sides. The front shall be made out of 12mm thick glass (as per profile). It shall be fixed in the grooves, made in side members, in an inclined manner (as per profile in drawing enclosed) with a gap of 75mm (max.) in between. The space shall be further divided in four equal parts with help of 12mm thick water proof plywood. All edges of the glass shall be polished. All the exposed edges of water proof board and plywood shall be provided with 6mm thick teak wood/hard wood lipping. All</p>				
8.2	CHEQUE DROP BOX / SUGGESTION BOX	No.	2.00		
	<p>Supplying and erecting cheque drop box / suggestion box (over all size 400mmx150mmx600mm) made of 19 mm thick BWP grade ply board and curved portion at top made out of 90mmx90mm C.P. teak/steam beach wood section. A slit opening of 10mmx150mm is to be provided at the top of the box. An openable shutter of 259mmx262mm size made of 19 mm thick BWP grade block board is to be provided.</p> <p>The entire exposed timber surface including all free edges is to be finished with 1mm thick laminate sheet of combination shade. Inner faces shall be painted with two coats of synthetic enamel paint of approved shade & quality over a coat of primer. Rate to include cost of necessary hardware fittings</p>				
8.3	NOTICE BOARD	No.	1.00		
	<p>Providing and fixing in position notice board (as per design) of size - 900mm x 600mm x 150mm. The sides shall be made out of 19mm thick water proof board with 1mm thick laminate (as per shade approved by the architect) on all exposed surfaces. It shall have 12mm thick tack The front shall have 6mm thick float glass sliding shutter in two parts. It shall also have 19mm wide two track aluminum channel for sliding arrangement, all around, along with locking arrangement. Board (Make - Cellotex or equivalent) wrapped with stretched blazer cloth (Make- Raymonds), of Rs. 200.00 per Mt. (approx.) in colour and pattern approved by the Architect. It shall be fixed with help of kail/partial wood (sect. 19mm x 25mm) frame work. It shall be covered with 6mm thick water proof plywood, on the back. All the exposed edges of water proof board and ply shall be provided with 6mm thick teak wood/hard wood lipping. All teak wood surfaces shall be melamine polished and other internal surfaces shall be painted with two coats of synthetic enamel over one coat of primer, all complete to the satisfaction of the Architect.</p>				
8.4	ETCHING WORK & BANK LOGO FOR BRANCH	LS	1.00		
	<p>Etching for Toughened glass, Etching for Front counters / Manager Cabin.</p> <p>Etching work on glass with chemicals (as per design and profile) as and where required. The rates shall include cost of all materials, labour, T& P, wastage, transportation etc. required for proper completion of work. It shall be made out of following profile.-Bank's logo (300mm dia. / 300mm x 300mm).All complete to the satisfaction of the Architect.</p>				
				Total	0.00



PROJECT - ESTIMATE FOR ELECTRICAL WORKS.					
BANK - INDIAN BANK					
BRANCH & ATM VINDHYACHAL					
S.N	PARTICULARS	Unit	Qty	Rate	Amount
1	POINTS & WIRING				
1.1	Supply & Installation of concealed Point Wiring for light, fan & exhaust fan points controlled thru modular switches complete with boxes & cover plate - The point wiring shall be carried with 3 x 1.5sq.mm FRLSH (Fire Resistant low smoke Halogen) stranded Cu. Wires in 20mm PVC conduit pipe concealed in wall/ floor/ panelling/ partitions or above false ceiling as per requirement. The job shall be complete & to the entire satisfaction of the Bank. Each Switch board should be provided with suitable capacity fuses/ fuse indicator. All switch & sokets shall be modular type complete with cover plate & GI/ MS box. The work shall also include for cutting chase for conduits and moulded boxes, if required, in the wall/ floor (Without damaging the building/wall) along with clamping the conduit at every 600mm interval & finally finishing the surface & matching the same with the existing surface. The rate should include the cost of all materials, labour, T&P, taxes & levies, scaffolding, shifting of furniture, carting away the debris and cleaning the floor etc. The job shall be complete & to the entire satisfaction of the Bank.				
a	Light points + AFF points including the cost of 6A switch	Point	55		
b	Ceiling fan point with step type electronic regulator controlled by one 6 amp. Modular switch. The switch should be at switchboard level.	Point	2		
c	Similar as above for wall mounting fan including box with 6A Control Switch along with clamp and ceiling rose	Point	12		
d	6A switch & Socket on SDb	Point	10		
e	One call bell point with ceiling rose/ 6amp. 3 pin socket controlled by one 6 amp. Push Modular switch. With call bell	Nos.	1		
1.2	RAW POWER POINT				
	Single Power Points - Supply & Installation of Circuit Wiring (Single 6/16Amps power Points) : Supply & laying of circuit wiring for 6/16 Amp. Switch points with 2 x2.5 + 1x 1.5sq.mm FRLSH (Fire Resistant low smoke Halogen) Cu stranded wires laid in 20mm conduit pipe concealed in wall/ floor/ panelling/ partitions as per requirement. The job shall be complete & to the entire satisfaction of the Bank. The earth wire of green color only. All switch & sokets shall be modular type complete with cover plate & GI/ MS box. The work shall also include for cutting chase for conduits and moulded boxes, if required, in the wall/ floor (Without damaging the building/wall) along with clamping the conduit at every 600mm interval & finally finishing the surface & matching the same with the existing surface. The rate should include the cost of all materials, labour, T&P, taxes & levies, scaffolding, shifting of furniture, carting away the debris and cleaning the floor etc. The job shall be complete & to the entire satisfaction of the Bank.	Point	8		
1.3	AC POINTS				
1.3	AIR CONDITION POINTS -Circuit wiring with 2x4.0sq.mm + 1x 1.5sq.mm FRLS Cu stranded wires (Finolex/ Anchor/ Skytone) to be laid in 19mm PVC pipe heavy duty laid & concealed in wall/ floor/ panelling/ partitions as per requirement. The job includes Supply & Fixing of Havells MCB protected power unit DBOXx type c/w 32A DP MCB including proper connections or any equivalent approved by Architect. The job shall be complete & to the entire satisfaction of the Bank (FOR CASSATE / SPLIT AC 2.0 TR UNITS)	Point	7		
1.4	STRONG ROOM MCB				
	Strong room controlling DP MCB at entry gate outside of strong room - Circuit wiring with 2x2.5sq.mm + 1x 1.0sq.mm stranded Cu. conductor (Finolex/Anchor/Havells) to be laid in 19mm M S conduit pipe heavy duty 16swg laid & concealed in wall/ floor/ paneling/ partitions or above false ceiling as per requirement. The electric wiring should be arranged separately for the Strong Room and it is to be connected to a plug outside. The job also includes supply & fixing of 32A DP MCB in 2way box including connections with lugs. The rate should include the cost of all materials, labour, T&P, taxes & levies, scaffolding, shifting of furniture, carting away the debris and cleaning the floor etc. The job shall be complete & to the entire satisfaction of the Bank.	Job	1		



2	UPS (BRANCH + ATM)				
2.1	Sub Main Wiring/ Cabling - : SITC of sub main wiring 4nos. 10 sq.mm Stranded copper wires for UPS Input from main incoming panel to incoming Db of UPS power input system etc. in 25mm dia PVC Heavy duty conduit complete to the satisfaction of the bank. (BRANCH + ATM)	JOB	1		
2.2	UPS Power Input System: SITC of 4way TPN Double door Db IP 42 horizontal Complete with 1no. Incoming 32A. TP MCB and 3 x 32A 2P MCB's to regulate supply for UPS complete in all respect as required and to the satisfaction of the bank.	Set	2		
2.3	Wiring for UPS Input & UPS Output (For both Critical 2Kva & Non- Critical 3Kva UPS) with 2x4.0sq.mm + 1x 1.5sq.mm stranded Cu. conductor (Finolex /Anchor /Skytone) to be laid in 19mm PVC pipe heavy duty/ Flexible pipe laid & concealed in wall/ floor/ panelling/ partitions or above false ceiling as per requirement. The rate should include the cost of all materials, labour, T&P, taxes & levies, scaffolding, shifting of furniture, carting away the debris and cleaning the floor etc.The job shall be complete & to the entire satisfaction of the Bank. (BRANCH + E-LOBBY)	JOB	2		
2.4	S/F of 32A 2P MCB in 2way metallic box including proper connections thru lugs. Both the Db's shall be inter looped- Qty included in item 3. (2nos. For ATM and 2nos. For Branch)	Each	4		
2.5	UPS Output Power Distribution System: SITC of 12 way SPN Db Double door IP -43 Siemens make with 32A DP 10kA MCB and 09 nos. SP 10kA MCB complete in all respect and as required & to the satisfaction of the bank. Siemens/ L&T/ MDS/ Schneider	Set	2		
2.6	Input Wiring for UPS Db's with 2x4.0sq.mm + 1x 1.5sq.mm stranded Cu. conductor to be laid in 19mm PVC pipe heavy duty/ Flexible pipe laid & concealed in wall/ floor/ panelling/ partitions or above false ceiling as per requirement. The rate should include the cost of all materials, labour, T&P, taxes & levies, scaffolding, shifting of furniture, carting away the debris and cleaning the floor etc.The job shall be complete & to the entire satisfaction of the Bank. (BRANCH + ATM)	JOB	1		
2.7	Supply & fixing of 3nos. 6A switches 1 module & 3nos. sockets 2modules Modular type complete with GI Box, Cover plate etc. The work shall also include for cutting chase for conduits and moulded boxes, if required, in the wall/ floor/ panelling/ partitions (Without damaging the building/wall) & finally finishing the surface & matching the same with the existing surface.The job shall be complete & to the entire satisfaction of the Bank. & include Wiring for computer terminal points with 3 x 1.5sq.mm Fire Resistant Low Smoke Halogen stranded Cu.wires to be laid in 20mm OD PVC conduit or 1" vertical drops heavy duty laid & concealed in wall/ floor/ panelling/ partitions or above false ceiling as per requirement. -From UPS - SPN Db - circuits for computer stations. (Please Note that 2 Nos. 6 amps. 5 pin modular type sockets and 1 no 16A 5 pin modular type socket, one 6A modular switch & one 16A modular switch with all accessories, inner/ outer plates, metal box etc. is to be provided near the Server rack & CCTV Rack)	Per Node	10		
3	MAIN INCOMING PANEL & DISTRIBUTION				
3.1	SITC of 200A Kit kats fuse unit 3nos in wooden patra complete with 200Amp. Neutral link complete in all respect as required.	Set	1		
3.2	Main Incoming Panel				
	Supply, Installation, Testing & Commissioning of main distribution board panel fabricated of 18swg (powder coated) comprising of	Nos.	1		
	Indicator lamps 3 nos.				
	Voltmeter & ammeter(one each)				
	Rotary selector switches 2 nos for voltmeter & ammeter				
	Busbar (each of RYB +N) copper 100 amp each				
	125 Amp MCCB(Siemens/ L&T/ ABB/ Schneider) incoming 3P adjustable 25kA				
	Changeover TPN 100 amp for DG set (Havells/ ABB/ Sochomac)				
	Outgoing 63A 3P MCB's - 6 nos.				
	Outgoing 32Amp 2P MCB's - 6 nos.				
	Earth bus bar 25x5mm GI strip - 2nos. At the bottom.				
4	Supply Installation testing & commissioning of XLPE insulated Armoured Aluminium Conductor Cable between main panel & DB's & generator of required thickness of approved make based on the load assessment & confirmation of the same with architect. This rates include cost of lugs at both the ends (Branch +ATM)				
4.1	3.5C x50 sq.mm cable from Meter to Kit kat to the main panel (Branch +ATM) (Approx - 30 mtr)	JOB	1		
4.2	4C x 25 sq.mm cable from Main Panel TO LHS DB (Approx - 20 mtr)	JOB	1		
4.3	4C x 25 sq.mm cable from Main Panel to RHS DB (Approx - 20 mtr)	JOB	1		
4.4	4C x 25 sq.mm cable from Main Panel to Generator (Approx - 20 mtr)	JOB	1		

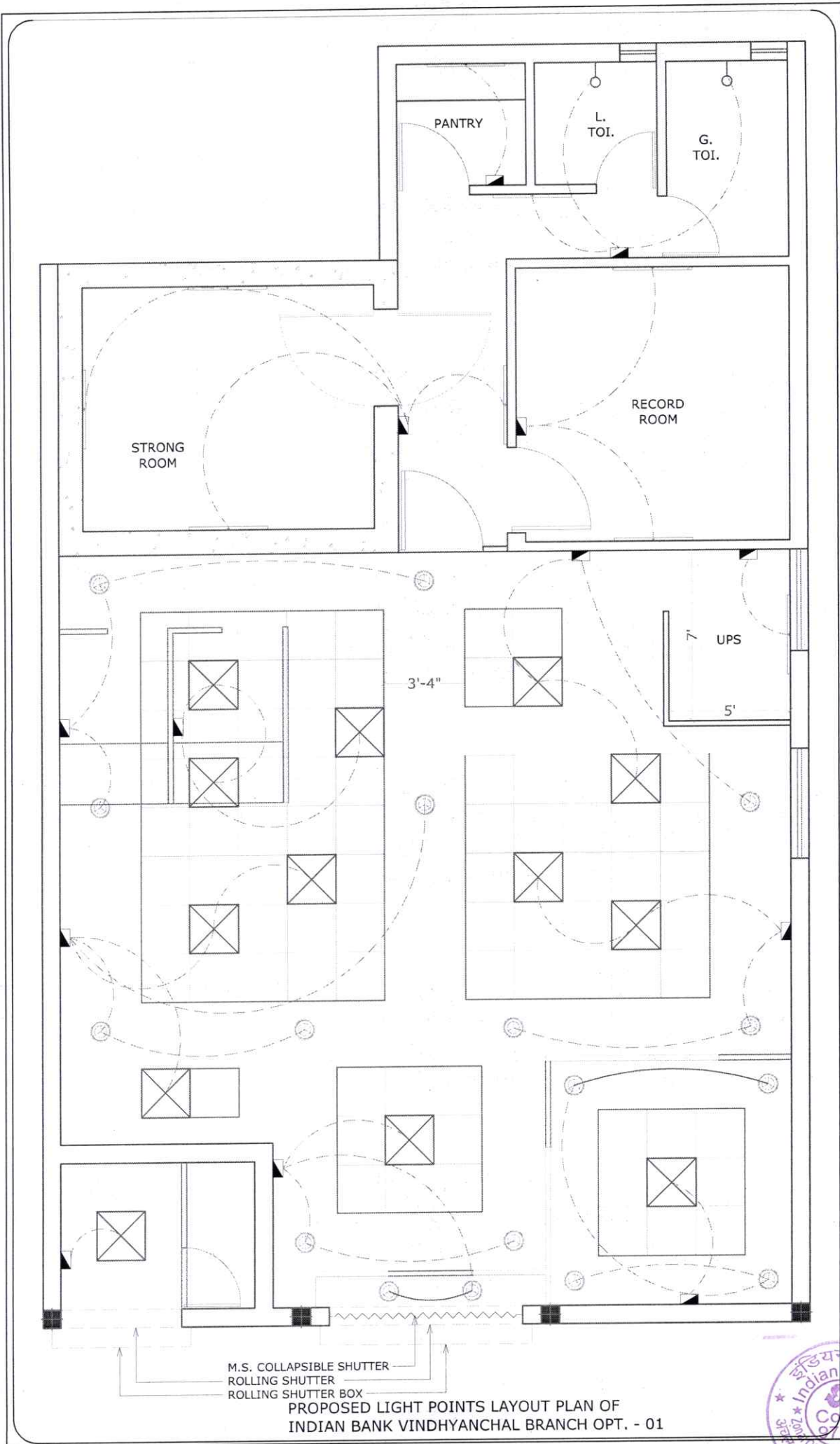


5	Supply, installation, testing & commissioning of VTPN Db double door with MCB as incomer IP 42 complete in all respects for AC, PP and L & F as under - Siemens/ L & T / HAVELLS / ABB	Each	1		
5.1	RHS 6way VTPN db - Location RHS wall opposite Cash cabins (From entrance to Rear record room & Toilet area) - Siemens 8GB0406VRC or equivalent				
	Incomer - 63A 3P MCB 10kA adjustable neutral to be directly connected to neutral bus				
	3no. 32A 1P-MCBs 10 KA - AC's - 2nos. RHS & 1rear				
	3no. 16A 1P-MCBs 10 KA - for single power points - 2 cash & 1 May I help You & 2nos. D/W				
	4nos. 10A 1P-MCBs 10 KA for L&F				
	4os. 6A 1P-MCBs 10 KA for L&F				
	Blanking Plates - 2no.				
	All connections to be terminated thru lugs				
5.2	LHS 6way VTPN db - Location LHS wall behind advance (From LHS LV Cash to Mgr Rm)- Siemens 8GB0406VRC or equivalent	Each	2		
	Incomer - 63A 3P MCB 10kA adjustable neutral to be directly connected to neutral bus				
	4o. 32A 1P-MCBs 10 KA - AC's - 3nos. LHS & 1 Mgr Rm				
	4no. 16A 1P-MCBs 10 KA - for single power points - (LV cash, 2 CRE, 1Advance, 2 MR & 2 Router)				
	2nos. 10A 1P-MCBs 10 KA for L&F				
	2os. 6A 1P-MCBs 10 KA for L&F				
	Blanking Plates - 2no.				
	All connections to be terminated thru lugs				
6	Glow sign Board - Circuit wiring with 2x2.5sq.mm + 1x 1.5sq.mm stranded Cu. conductor (Finolex/Anchor/Skytone) to be laid in 20 mm PVC pipe heavy duty laid & concealed in wall/ floor/ panelling/ partitions or above false ceiling as per requirement. The rates should include the cost of all materials, labour, T&P, taxes & levies, scaffolding, shifting of furniture, carting away the debris and cleaning the floor etc. The job shall be complete & to the entire satisfaction of the Bank.	JOB	1		
7	EARTHING JOB				
7.1	Supply, Installation, Testing and Commissioning of Maintenance Free Earthing system made up of Copper bonded rod / Galvanized JK Chemrode 10 feet length, 25 mm dia. (Minimum copper bonding shall be 0.25mm) filled with highly conducting metallic compounds with permanent sealing at both the ends with lead terminal including bore well, chamber with cover and all required civil allied works, earth pit to be filled with 2 bags of 25 kg pack of Back Fill Compound (Earth Enhancement Material). The rate should be inclusive of Rod-to Conductor connectors, Earth enhancement material, Pit Cover and other accessories as required and as per specification and other applicable codes (include chamber for earthing, Earthing certificate to be submitted along with the bill). The job also includes wiring with 1 x 10 sq.mm PVC insulated copper conductor wire of 650 / 1100 Volt grade (Finolex, Polycab Make) upto 10 m as earth wire with concealed / exposed GI pipe including making all the connections with guaranteed E/N voltage of less than 3 volts and resistance less than 1 ohms.	Nos	2		
7.2	Supplying, laying and fixing of 10 sq mm copper pvc insulated wire covered with GI Pipes from earthing plate to main panel, if required beyond 10m	Metre	20		



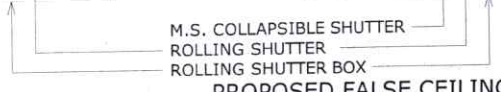
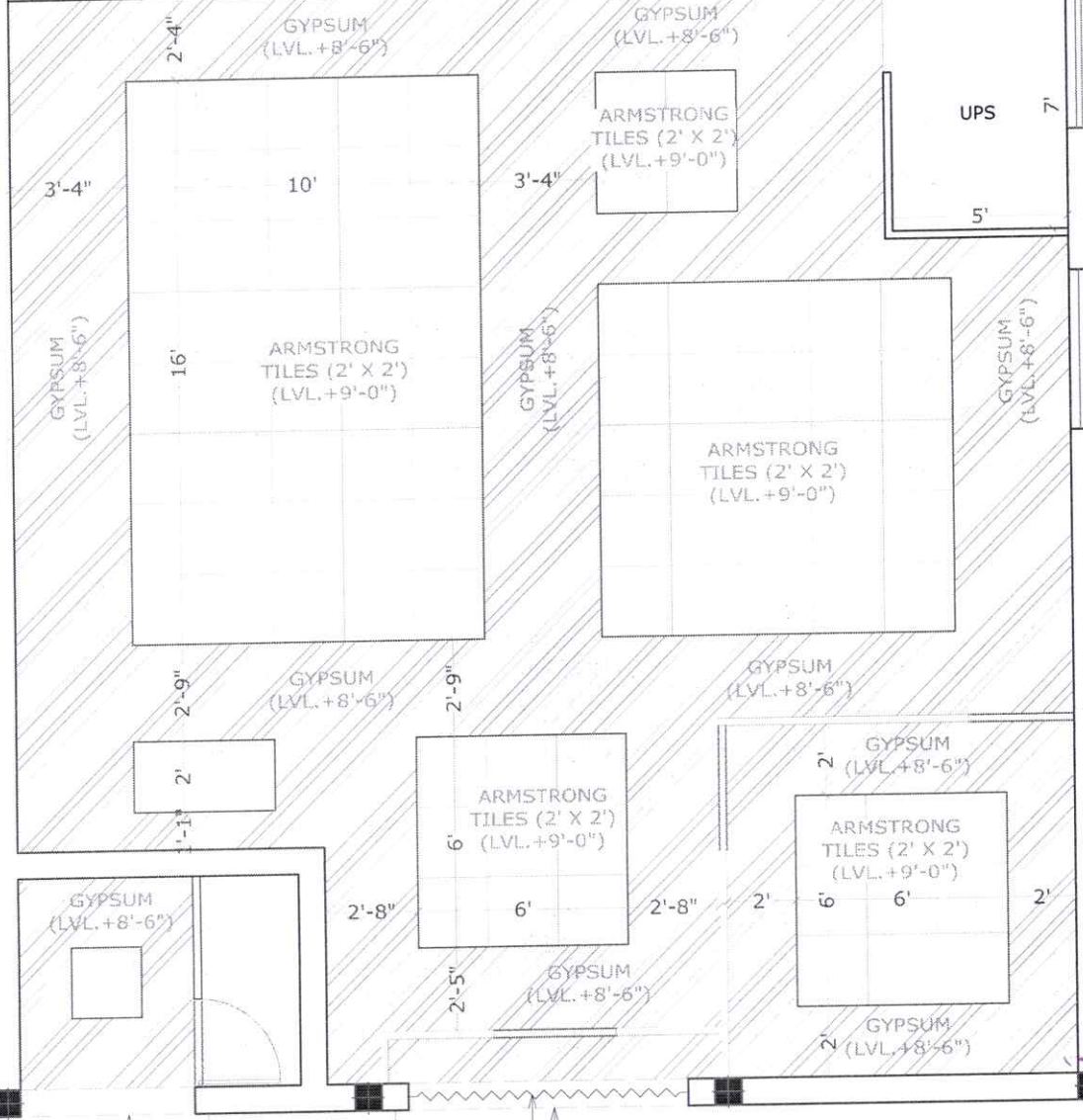
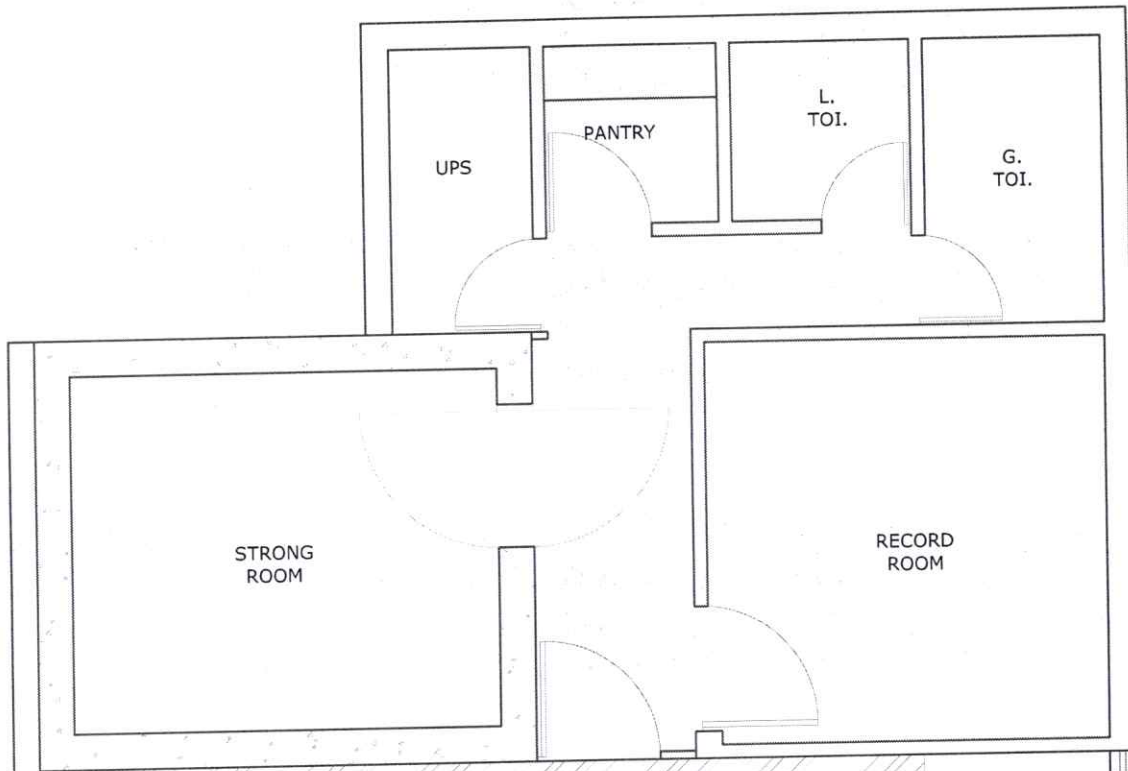
8	F - FIXTURES & FITTINGS				
8.1	Supplying and fixing PHILIPS / CROMPTON / HAVELLS make 36W LED FLAT PANEL after disconnection of existing fitting 2'x2' size in grid type false ceiling, 600x600 suitable for recess mounting, CRCA sheet, asthetic looking, complete.	Each	10		
8.2	Supplying and fixing Philips make or eqv 15 W LED round type downlighter (Philips / Crompton / Havells / Wipro / Jaguar)	Each	22		
8.3	Supply installation testing and commissioning of 1*20watt Batten type tubular LED light fitting with LEDs, driver, diffuser, and housing complete in all respects in UPS room and record /wc/bath room /suitable place with complete in all respect with required color on need basis.	Each	9		
8.4	S/F of angle holder for bulbs including cost of 12W CFL lamp for Toilets	Each	4		
8.5	Supply & installation of wall bracket fan 450 mm Metal body (Heavy duty/ high speed) Make Crompton Greaves / Havells/Orient (to be supplied after consultation with architect/Electrical Engineer as per approved drawing)	Each	12		
8.6	Supply & fixing of the 1200 mm 48" Sweep Ceiling fan (Orient / Crompton Greaves/ Havells) with downward rod(below false ceiling), canopy etc. including of PVC flexible copper wire.(white colour)(High speed) (Warranty Certificate is necessary)with downward rod, circular boxes, ball sockets, ceiling plates,suitable arm bracket etc. including connection with wire)White colour (WITH REGULATOR)	Each	2		
8.7	Supply & Fixing of fresh air fan 12" - Crompton Greaves / Usha/ POLAR / Bajaj	Each	2		
8.8	S/F Heavy Duty Exhaust Fan 450mm with all the accessories complete as per Bank's Instructions in UPS room	Each	1		
8.9	Supplying and fixing High Luminus LED strip 3000 K 24 watt 5 mtr length with driver (Philips or Havells or Crompton)	SET	0		
9	H - TELEPHONE				
9.1	P/f Krone or equivalent box in the server room & out side of the Branch with a ten pair connecting strip for telephone with lock & key	Each	1		
9.2	10 Pair Cable with Connection from main Panel to entrance of the Branch	JOB	1		
9.3	Supply & fixing on wall/ furniture/ partition recessed type non modular telephone socket outlet (RJ-11) with mounting box & front plate complete with chase cutting, mending good etc. as required complete with Supply & laying of 2pair 0.61mm dia. PVC insulated telephone cables through 19mm dia rigid PVC conduit of suitable diameter as directed by the consultant from telephone junction box to telephone socket outlet including interconnection mending good etc. as required complete in all respects.	Each	3		
10	I - DATA CABLING				
10.1	Supply & Fixing of XL RJ 45 toolless information outlet with Duplex face plate with dual connectors Grey colour cat 6e including cost of supplying & laying CAT 6e (as directed by Architect from Server to Switch, Switch to computer I/O data socket as required complete in all respects) in 25mm dia rigid PVC conduit (including laying of GI draw wire complete with junction box, circular box, elbows, bends & other accessories as required by chase cutting on floor, wall, through partition or over false ceiling.The data cabling pipe should be laid at a minimum distance of 3ft from pipes laid down for power distribution) including interconnection with connectors as required complete in all respects.	Each	12		
10.2	Supply & fixing of 7ft Grey colour Patch chord Giga speed Systimax/ D link make	Each	12		
10.3	Supply & fixing of 3ft Grey colour Patch chord Giga speed Systimax/ D link make	Each	12		
10.4	S/F of 24 Port Jack Panel fully loaded systimex make	Each	1		
10.5	S/F of 9U wall mounted rack c/w fan etc as required	Each	1		
10.6	S/F of Cable Manager as required	Each	1		
	ELECTRICAL WIRING WORKS				
	ELECTRICAL FIXTURES				0.00
	GRAND TOTAL AMOUNT (BRANCH + ATM)				0.00
					*ALL RATES ARE EXCLUSIVE OF GST





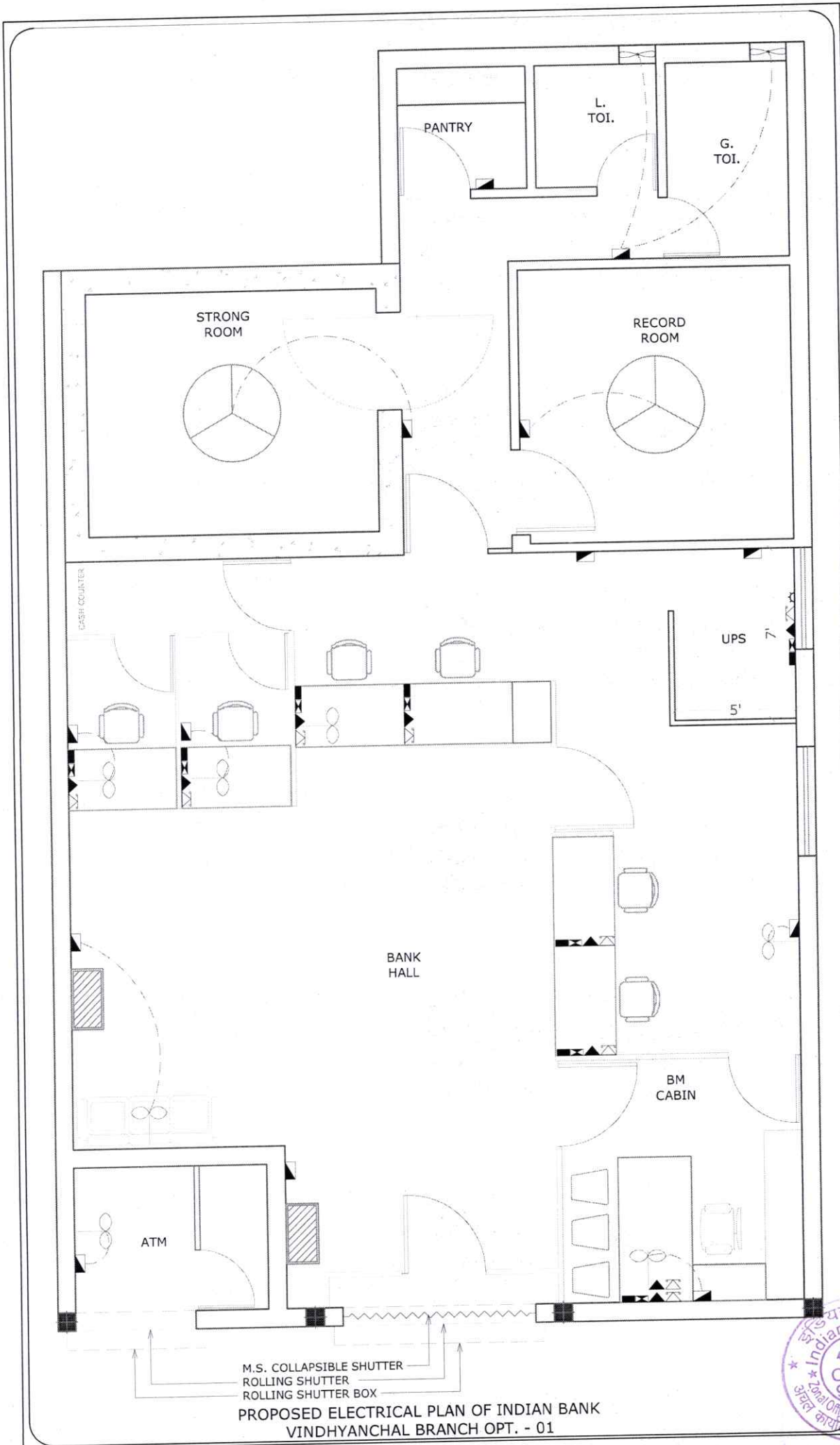
PROPOSED LIGHT POINTS LAYOUT PLAN OF
 INDIAN BANK VINDHYANCHAL BRANCH OPT. - 01





PROPOSED FALSE CEILING LAYOUT PLAN OF
 INDIAN BANK VINDHYANCHAL BRANCH OPT. - 01





PROPOSED ELECTRICAL PLAN OF INDIAN BANK
 VINHYANCHAL BRANCH OPT. - 01

