

**ABSTRACT ESTIMATE FOR THE INTERIOR FURNISHING,
ELECTRICAL, AND AIR-CONDITIONING WORKS
FOR INDIAN BANK , CHETIYARPATTI BRANCH ,
(NEW PREMISES) , TAMILNADU.**

SUMMARY SHEET

<u>SL.NO</u>	Type of work	Amount Quoted (Rs.)
1.	Interior Furnishing Works	Rs.
2.	Electrical Works	Rs.
3.	Data cabling Works	Rs.

TOTAL
(inclusive of all taxes and expenses & GST etc.,)

Notice: TENDERERS MUST VISIT THE SITE AND INSPECT FOR THEMSELVES THE ACTUAL WORKS TO BE CARRIED OUT BEFORE SUBMITTING THE TENDER

TENDERERS MUST VISIT THE SITE, INSPECT AND SUBMIT A COMPETITIVE BID FOR THE BUY BACK OF THE EXISTING FURNITURES IN THE RESPECTIVE COLUMNS PROVIDED IN THE TENDER DOCUMENTS.

**PROPOSED INTERIOR FURNISHING WORK FOR INDIAN BANK - CHETIYARPATTI
BRANCH (NEW PREMISES) – BILL OF QUANTITIES**

SL.No	Particulars	Qty	Unit	Rate	Amount
				(Rs)	(Rs)
	INTERIOR/FURNISHING WORKS				
I	BRANCH				
1	Full height partitions with glass panels for manager cabin:				
	Supplying and fixing glazed partitions using aluminium section of size 2"x 2" frame work having 2'x2' square grid on both sides covered with 6mm ply wood of approved make and finished with 1.0mm thk lamination which is to be used as per the drawing mentioned. Partitions frame is to be fixed properly to the roof slab, wood lipping with Teak wood finish to be fixed to fix the 12mm thk glass with etching for full height partition. A glazed door has to be provided as per the drawing with door closer and locks of godrej make. (the partitions area given below the false ceiling level cost includes for aluminium frame to be extended and fitted up to roof ceiling. Doors to be made out of 10mm thk glass with etching as per the design glass with etching has to be fixed on aluminium channel and the aluminium frame shall be covered with 6mm plywood with 1.0mm thk lamination which is to be used as per the drawing mentioned the cost include 5" brass hinges(4nos/door) and door handle as approved by architect.				
	Partition size : (9'3"+ 10'3") X 8'0"	156	/ Sq.ft		
2	Glazed partitions with entrance door:				
	Supply and fixing of first class Burma teak wood . Main frame specifications-4"x3".Supply and fixing burma teak wood door frame size 5"x2"side and top and 6"x2" at bottom, stainless steel 1'0" ht handles to be fixed on both sides with door closer and lock of godrej make . 12mm thk glass with edging is to be fixed on the door frame. Proper teak wood lipping is to be provided to fix the 12mm thk glass. Cost includes brass hinges 5"-4Nos with 10" brass tower bolt-2Nos. All round with locker polish of approved shade and colour.2" teak wood lipping is to be provided on outer frame all sides. Door size (6'0"X7'0")	42	/sq.ft		
3	Cash cabin partition with Table				

	<u>Partition</u>				
	Providing and fixing in position of 2"x2" aluminium section (2feetx2feet grid)both side covered with 8mm thk ply wood and finished with 1.0 mm thk lamination which is to be used as per the drawing mentioned. Cash cabin size is 5'0"x8'0". wood lipping with teak wood finish to be fixed to fix the 12mm thk glass with etching for cash counter partition. Cash counter 7'0" ht consists of plywood/glass partition with provision of opening at customer side and clerical side as per drawing.				
	Door to be made out of aluminium channel and the aluminium frame shall be covered with 8mm plywood with1.0mm thk lamination with godrej night latch and godrej door closer . wood lipping with teak wood finish is to be used to fix . The cost includes 5" brass hinges-3Nos and door handle as approved by architect.				
	door size(2'6"x6'9")				
	<u>Table height 2'6"</u>				
	The table having 25mm thk machine made post formed top with side and front side drop made of 18mm thk ply wood and drawer units/shutter made of 18mm plywood. All exposed area is finished with 1.0mm thk lamination of which is to be used as per the drawing of approved make. For keyboard drawer and table drawers/shutters set lock (godrej) , stainless steel handles to be provided. Shutter is to be fitted with SS hinges of approved make to be provided for each clericals table. Front side edges of table/drops (clerical side) are to be finished with wood with teak wood finish painting with one coat of primer and two coats of paint after doing patty is to be undertaken inside the drawer/shutter/table inner side. Powder coated metal key board of good quality is to be provided.				
	25mm thk table machine made post formed top				
	5'0"x 2'6"- 1No	0	/ No		
	4'6"x 2'6"- 1No	1	/ No		
4	Front & side partition with door as per drawing				
	Front side (4'6" X 4'6")				
	Side partition (7'3" X 7'0") X 1 No	92	/sq.ft		
	Top side & Aluminum grills (4'9" X 7'3") 1 No				
	Wall side (1'6"X7'0")				
5	Clerical/officer table-25mm thk Machine made post formed table top and side table top				
	<u>Table height 2'6"</u>				

	<p>The table having 25mm thk machine made post formed top with side and front side drop, bottom base made of 18mm thk plywood and drawer units /shutter made of 18mm plywood. All exposed area is finished with 1.0mm thk lamination of which is to be used as per the drawing of approved make. For keyboard drawer and table drawers/shutters set lock (godrej), stainless steel handles to be provided. Shutter is to be fitted with SS hinges of approved make to be provided for each clericals table. Front side edges of table/drops(clerical side) are to be finished with wood with teak wood finish painting with one coat of primer and two coats of paint after doing patty is to be undertaken inside the drawer/shutter/table inner side. For the customer side of clerical table 10mm glass partition with edging of 1'3" ht to be fixed above the table using metal clamp to be fixed on side partitions /front pillar partition to be fixed between tables. The front pillar partition is to be made with 2"x 2" aluminium section both side covered with 6mm thk plywood and finished with 1.0mm thk lamination as per drawing. The last table –side partition size 4'6" htx4'0" customer side and 3'6" ht clerical side supported with 2"x 2" aluminium section both side covered with 6mm thk plywood and finished with 1.0mm thk lamination as per drawing at the bottom and at top table 10mm thk edged glass fixed with metal clamp.</p>				
	Table with 25mm P/F table top 6'0" X 2'6" - 1 No (B.M)	1	/ No		
	Table with 25mm P/F table top 4'6"X2'6"- 1 Nos (O.T-2)	1	/ No		
	Table with 25mm P/F Side table top (3'6"x 1'6") (Mr) (3'0"X 1'6") (O.T -2)	2	/ No		
	Table with 25mm P/F table top (4'0"X 2'6") – 3 Nos (C.T-1,ABM,O.T-1)	3	/ No		
	Table with 25mm P/F table top (6'6"X 2'6") – 1 No (GLA)	1	/ No		
	Table with 25mm P/F table top (4'0"X 2'0") – 1 No (SS)	0	/ No		
	Table with 25mm P/F table top (3'0"X 2'0") – 1 No	0	/ No		
6	Storage Unit(Full / low height) :				

	Providing and fixing 1'6" wide storage unit made of 18 mm plywood finished with 1 mm lamination of approved colour & pattern on top and all visible sides with shelves. Inside painting with one coat of primer and two coats of paint after doing patty is to be undertaken. All exposed edges are finished with hardwood lipping. Provided openable shutters with SS handles, lock and auto closing hinges as per design.				
	F.H.S	0	/sq.ft		
7	Front pillar partition & side partition with glass				
	(3'6" X 4'0") 5 Nos	70	/sq.ft		
8	Full Height Partition with Glass Door:				
	Supplying and fixing PLYWOOD partitions using aluminium section of size 2"x 2" frame work having 2'x2' square grid on both sides covered with 6mm plywood of approved make and finished with 1.0mm thk lamination which is to be used as per the drawing mentioned. Partitions frame work to be fixed properly to the roof slab. A glazed door has to be provided as per the drawing with door closer and locks of Godrej make. Doors to be made out of 8mm thk glass with etching as per the design glass with etching has to be fixed on aluminium channel and the aluminium frame shall be covered with 6mm plywood with 1.0mm thk lamination which is to be used as per the drawing mentioned. The cost include 5" brass hinges (4 nos) and door handle as approved by architect. Door size 3'0"X 7'0"				
	Partition size :				
c	Plywood Partition with double side lamination (20'0"+4'6"+10'0"+6'0") X 11'9" + (3'0"X 7'0") 2 Nos + ded (6'0"X 7'0") L.H.P : (3'0"X 4'0")	487	/sq.ft		
9	Fixing of glass				
	Glass with all side edging is to be fixed in between pillar partition on the table top using SS clamp as per drawing.				
	12mm thk glass of size 4'0" X 1'3" - 3 Nos	3	/ No		
	12mm thk glass of size 6'6" X 1'3" - 1 Nos	1	/ No		
	10mm thk glass for table top 6'0" X 2'6" - 1 Nos	1	/ No		
10	False ceiling:				

a	<p>Supplying and Erecting of Saint Approved make Gypsum board false ceiling at different heights as per drawing and Framework shall be made with "Gypoc " G.I. Section. Perimeter shall be fixed around the wall and partition of size 20 x 28 x 30 x 0.5 thick / Ceiling angle of size 25 x 10 x 0.5 thick shall be suspended from structural soffit with 1220 c/c distance on both direction and fixed with soffit cleat of size 27 x 37 x 25 x 1.6 thick and rawl plug / Intermediate channel of size 15 x 45 x 15 x 0.9 thick to support the ceiling section / Ceiling section of size 80 x 26 x 51 x 0.5 thick shall be connected to the intermediate section at 457mm c/c with connecting clip of size 2.64 diameter. 12.5mm thick Gypsum plain board to be fixed on the ceiling section with drywall screws at 230mm c/c on both direction. Gypsum board joints shall be connected with fibre tape and joints to be finished with putty, the putty shall be applied fully on the gypsum board area. Cost include 2 coats of emulsion paint and 1 coat of primer, cutout opening for light fittings, stepping, box opening, provision for hidden lights arrangements. Cost include wastage, hardwares, tools, lead, lift, loading, unloading charges, labour charges, transport and etc.</p>				
	<p>Note: Measurements shall be made flat area and verticals in SFT.</p>	763	/ sq.ft		
11	Writing ledge/challon holder				
	<p>Fabricating and fixing of writing ledge and challon holder made of 10mm glass supported with plywood stand finished with lamination glass edges beveled to half round safe suitably supported on ply wood as per drawing.</p>	1	/No		
12	Notice board				
	<p>Fabricating and fixing of notice board made of teak wood frame filled with soft board and covered with fabric, a color of the fabric to be math the décor the outer frame of the notice board is to be finished with locker polish.</p>	1	/ No		
	(size 4'0"x3'0")				
13	Wicket door : 3'0" x4'0"	12	/sq.ft		
14	Painting Entrance grill gate and Rolling Shutter etc.,				
	<p>using synthetic enamel paint two coats of approved colour including all frameworks and related elements after removing the existing paint with sand paper and thereafter cleaning the surface including all labour charges, material charges etc complete.</p>	0	/sq.ft		
15	Wall paneling:				

	Aluminum section of size 2"x1" (grid 2'0"x2'0") frame work and covered with 8mm commercial plywood (one side fixing) finished in lamination. The paneling area given below the false ceiling level. Cost includes for aluminum frame to be extended and fitted up of roof ceiling. Size	0	/sq.ft		
16	Providing and fixing Cheque Drop Box of size				
	(1'6" x 1'6"x 1'0")	2	/ No		
17	Providing and fixing Roller blinds for all windows Colour and materials selection by the Architect, Rates including material cost and labour charges etc. complete.	66	/sq.ft		
	(4'6"X 4'6") X 2 Nos + (5'6"X4'6") 1 No				
	TOTAL (I)				
	(inclusive of all taxes and expenses & GST etc.,)				

PROPOSED ELECTRICAL WORK FOR INDIAN BANK - CHETIYARPATTI BRANCH (NEW PREMISES) - SCHEDULE OF QUANTITIES

No	Description of work	Size/qty	Unit	Rate	Amount
I	BRANCH				
1	Supply and laying of following size of original (Approved make)PVC insulated copper wire in suitable PVC conduit of 2mm thk with necessary PVC accessories like elbows, bends etc, necessary clampings				
a	4 x 6 sqmm + 1 x 4 sqmm from Main MCB DB to UPS input cost of 4 x 6sqmm wire & } 1 x 4 sqmm wire }				
	Cost of PVC conduit pipes }	25	/M		
	Laying/fixing charges }				
b	<u>BM cabin one AC machine each</u> Cost of 2 x 4 sqmm wire 1 x 1.5 sqmm wire				
	Cost of PVC conduit pipes	35	/M		
	Laying/fixing charges				
c	<u>Banking Hall 3 AC machine</u> Cost of 2 x 4 sqmm wire } 1 x 1.5 sqmm wire				
	Cost of PVC conduit pipes	130	/M		
	Laying/fixing charges				
d	2 x 4 sqmm + 1 x 2.5 sqmm from UPS output to UPS output main MCB DB & UPS output circuits DBs Cost of 2 x 4 sqmm wire & } 1 x 2.5 sqmm wire }				
	Cost of PVC conduit pipes } Laying/fixing charges }	15	/M		
e	3 x 2.5 sqmm from UPS output to circuit DBs to UPS points (Four circuits) Cost of 3 x 2.5 sqmm wire & } Cost of PVC conduit pipes) Laying charges }				
	(UPS & RAW POWER CIRCUIT)	420	/M		

2a	Supply and fixing of 2 x 4 sq.mm and 1 x 2.5 sq.mm (Approved make) copper wire in PVC conduit of 2mm thk from change over switch to generator point	0	/M		
b	Supply and fixing of 15 A switch plug and socket with suitable surface mounted box. (Approved make)	3	/No		
3a	Supply and laying for 3.5 X 50 sq.mm aluminium armoured cable for EB meter to Main DB	40	/M		
b	Supply & fixing of (Approved make) following 8way 3phase vertical type double door MCCB DBs in suitable MS enclosures with necessary interconnection main MCCB DB				
	MS Enclosures -1No	1	/No		
	100Amps MCCB -1No	1	/No		
	63Amps 3pole MCB -3Nos	3	/No		
	SP 40Amps MCB -10Nos	10	/No		
c	UPS INPUT MAIN MCB DB (Approved make) with MS enclosure	1	/set		
	63Amps 4pole MCB				
d	UPS OUTPUT MAIN MCB DB (Approved make)				
	Double door single phase 8way with MS enclosure -1				
	40Amps 2pole MCB -1	2	/set		
	SP 10 Amps MCB -6				
e	Supply & fixing of (Approved make) following 8way three phase vertical type double door MCB DBs in suitable MS enclosures with necessary interconnection main MCB DB for lighting				
	MS Enclosures	1	/No		
	63 Amps 4 pole MCB	1	/No		
	SP 25 Amps MCB	12	/No		
4a	Change over with phase shifter Supply & Installation of 63Amps 4 pole change over switch for generator - (Approved make)	0	/No		

b	Supply & providing of 3 Phase indicating lamps (3Nos) in suitable box	1	/set		
c	Supply & fixing of 63Amps Auto Phase Selector switch for UPS Input	1	/set		
	(Approved make)				
d	Supply and laying of 2pair Telephone cable (Approved make) suitable PVC pipe/channel	160	/M		
	cost of cable				
	cost of PVC pipe				
	Laying charges				
e	Supply & installation/fixing of Modular type RJ11 Telephone sockets (Approved make)	6	/No		
f	Supply & installation/fixing of 20 pair krone box with Connectors including Temination Charges	1	/set		
5a	Supply, installation and testing of dedicated earth pit for UPS as per standard using 600mm x 600mm x 3mm copper thick. The rate should include excavation, salt and charcoal powder, brick work 450mm x 450mm, cast iron cover/plate etc of & providing of copper plate ear thing as per standard for dedicated earth pit for UPS	1	/set		
b	Supply & laying of 6sqmm copper wire within 20mm GI pipe from earth electrodes to the UPS	35	/M		
6a	Supply & fixing of 3Nos 6amp socket with 2Nos.6amp switch in suitable surface mounted box. - UPS Power (Approved make)	12	/No		
b	Supply & fixing of 1Nos 6amp socket with 1Nos.6amp switch in suitable surface mounted box for Wall Fan and Officer Table. - (Approved make)	16	/No		
c	Supply & fixing of 2Nos 6amp socket with 1Nos.15amp switch in suitable box for Raw Power- Modular type- (Approved make)	5	/No		

7a	Supply and fixing of original 4 x 4 sq.mm + 1 x 2.5 sqmm copper wire in PVC conduit of 2mm thick from Main MCB DB to generator change over and from changeover to lighting board	0	/M		
b	Supply and fixing 20A Metal clad plug and socket for AC unit	5	/No		
8	Point wiring:				
	Point wiring for light,fan, 6A switched sockets with (Approved make) 2R 1.5 Sqmm FRLS insulated multi strand single core copper conductor wire drawn in 20mm dia 2mm thick PVC conduit to be laid on false ceiling by clamping with GI clamps, concealed on wall and RCC roof etc with all accessories like conduit bends, junction boxes etc. The work also involves supply and fixing of 6A modular switch housed in manufacture's zinc passivated MS box to be concealed to wall.				
a	One light point controlled by one switch	35	/No		
b	Two light controlled by one switch	1	/No		
c	Fan point with fan hook	5	/No		
d	6A switch box sockets in the switch board itself	5	/No		
e	Supply and fixing of Calling bell with switch including Connection Charges, etc., complete.	1	/No		
f	Supply and installation of 2R 2.5 Sqmm FRLS multi strand copper wire drwn in 20mm PVC conduit 2mm thick to be laid concealed on wall between DBs and switch boxes including terminations at both ends (UPS & RAW POWER CIRCUIT)	400	/M		
9	LIGHT FIXTURE :				
	(Approved Make)				

a	Supply of commercial Recess mounted 36W LED luminates comprises of CRCA housing powder coated in white the LED cluster are PMMA diffuser uniform glare-free light distribution suitable for 600mmx600mm coiling and operating voltage 240V input current 0.140 – 0.160 AMP input wattage 33-37W	12	/No		
b	Supply of ISW LED Recess mounted down lighter comprises of aluminium dia cast housing and ring finished white powder coated with high translucent frosted PMMA diffuser operation voltage 240V input current 0.06-0.075 AMP input wattage 14.5-15.5W	3	/ No		
c	1 X 28 With Patti Light Fixture.	13	/ No		
d	48” Ceiling Fan of Approved make.	5	/ No		
e	Supply & fixing of Blue colour LED FLEXI Strip Light fittings in the stepped false ceiling area including the cost of wiring etc., complete.	0	/m		
f	Battern Holder with 11 Watts CFL Retrofit.	2	/No		
g	Wall mounted Fan Approved make.	8	/ No		
h	Exhaust Fan Approved make.	3	/ No		
10	INVERTER ARRANGEMENTS (Inverter & Battery supplied by bank)				
a	Inverter Input MAIN MCB DB (Approved make) with MS Enclosure 32Amps 2pole MCB	1	/set		
d	Inverter OUTPUT MAIN MCB DB (Approved make) 6 way SPN DB with MS enclosure -1				
	32Amps 2pole MCB -1	1	/set		
	SP 10 Amps MCB -4				
11	Supply and fixing of 15 A switch plug and socket with suitable surface mounted box. (Approved make	2	/No		

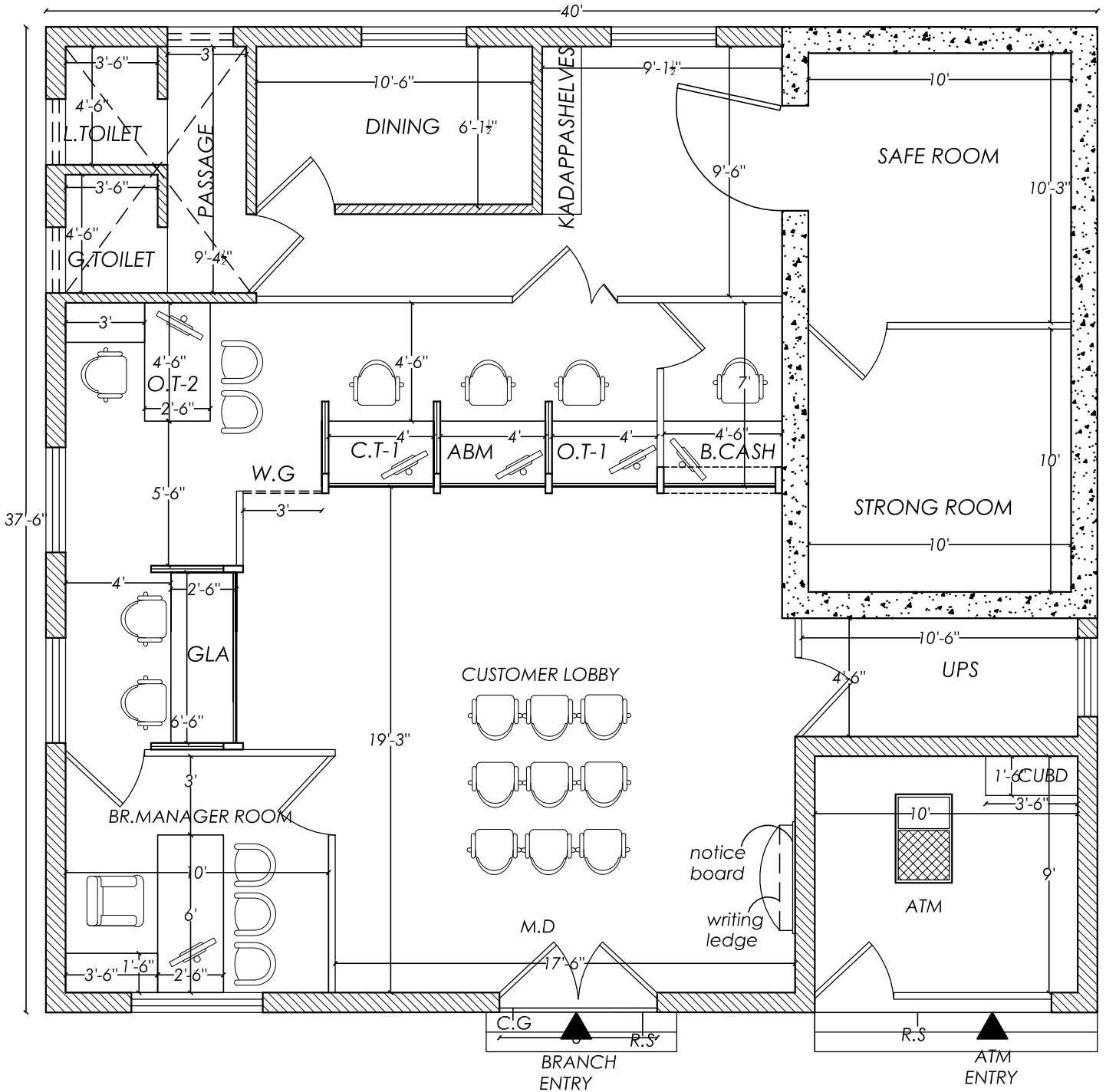
12	Supply and installation of 2R 2.5 Sqmm FRLS multi strand copper wire drwn in 20mm PVC conduit 2mm thick to be laid concealed on wall between DBs and switch boxes including terminations at both ends (INVERTER WIRING)	90	/M		
	TOTAL (I)				
	(inclusive of all taxes and expenses & GST etc.,)				

**PROPOSED DATA CABLING WORK FOR INDIAN BANK -
CHETIYARPATTI BRANCH (NEW PREMISES) - SCHEDULE OF
QUANTITIES**

S.No	Description of work	Qty	Unit	Rate	Amount
1	Supply & laying of CAT 6 Data Communication cable in 2mm thk heavy duty 20mm dia PVC conduit and making holes in the partitions / wall all accessories as required (DLink)	390	/ m		
2	Supply & Installation, Testing & Commissioning of Modular type 1Nos of RJ45 Female Jack housed in PVC box with suitable Face plate fixing the same in the wall / partition with all accessories etc.,as required.	11	/SET		
3	Supply and fixing of 1M Mounting CAT -6 Cord	11	/SET		
4	Supply and fixing of 2M Mounting CAT -6 Cord	11	/SET		
5	Supply & Installation of 24 port SWITCH	0	/SET		
6	Supply & Installation of 24 port CAT 6 Jack Panel	1	/SET		
7	Supply & Installation of 9u Wall mounting Server rack	1	/SET		
	TOTAL				
	(inclusive of all taxes and expenses & GST etc.,)				

I N D I A N B A N K

CHETIYARPATTI BRANCH (NEW PREMISES)



REFERENCE:

FHGP - FULL HEIGHT GLAZED PARTITION
 FHP - FULL HEIGHT PARTITION
 LHP - LOW HEIGHT PARTITION
 F.H.S - FULL HEIGHT STORAGE
 G.L.A - GOLD LOAN APPRAISER
 O.T - OFFICER'S TABLE
 C.T - CLERICAL TABLE
 R.S - ROLLING SHUTTER
 C.G - COLLAPSIBLE GATE
 W.G - WICKET GATE
 M.D - MAIN DOOR (6'0"X7'0")

D - DOOR (3'0"X7'0")
 D1 - DOOR (2'6"X7'0")
 W - WINDOW (4'0"X4'0")

NOTE :
 WINDOW SILL HEIGHT - 3'0"
 LINTEL HEIGHT - 7'0" & 8'0"
 ROOF HEIGHT LVL - 11'9"
 ROOF BEAM BOTTOM LVL - 10'6"

CARPET AREA DETAILS :
 FOR BRANCH : 1205.00 sq.ft
 FOR ATM : 90.00 sq.ft

TITLE

TENDER CONCEPT



DRAWN	- R.M
JOB NO	- 92-23
DATE	- 21.05.2024
SCALE	- N.T.S.
SHEET NO	- 01

MATHURA ASSOCIATES

ARCHITECTURAL & STRUCTURAL CONSULTANT
 INTERIOR DESIGNS - VALUERS - LANDSCAPE

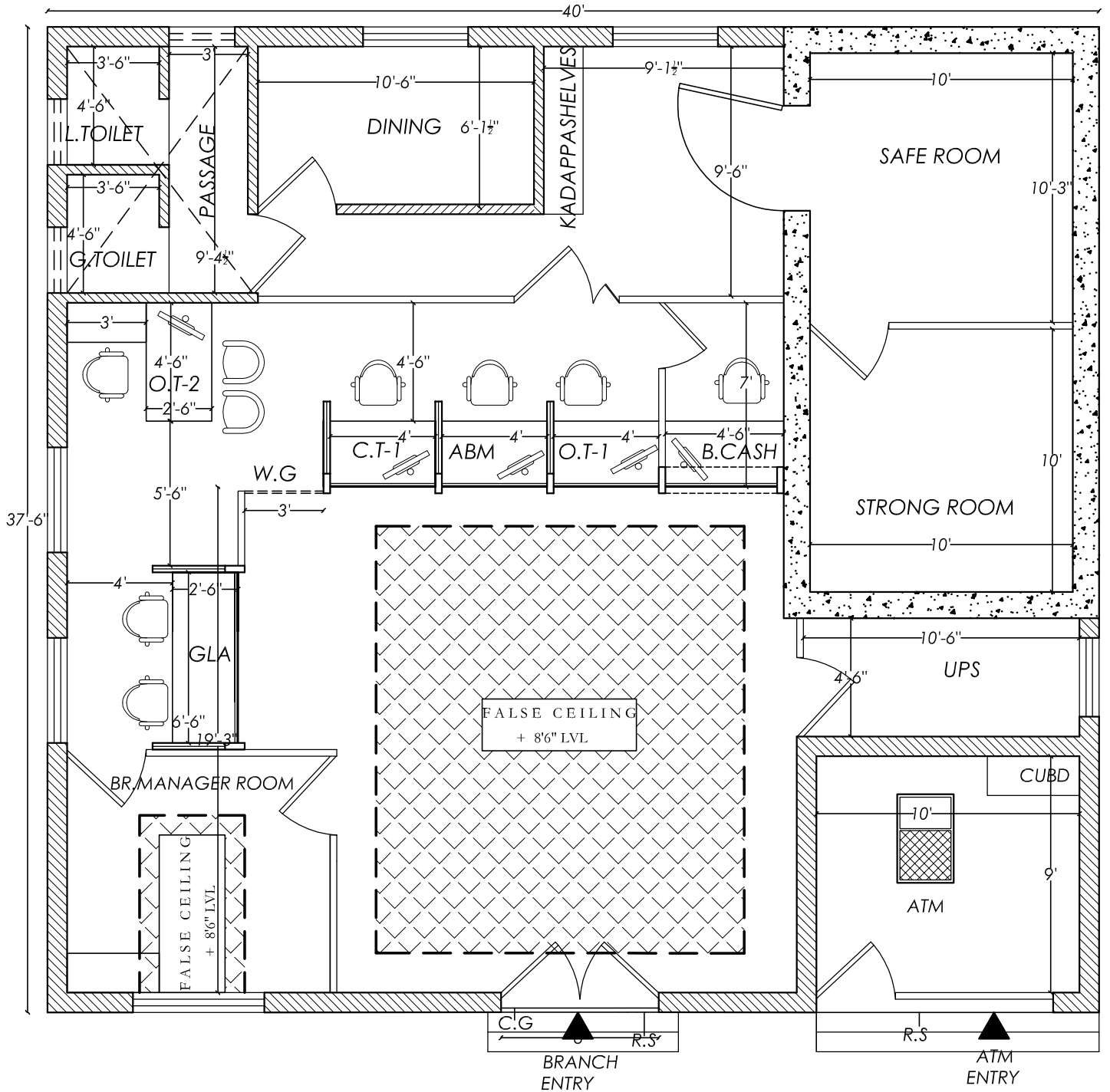
Contact :
 99658-81704
 96006-31864



Proprietor :
Ar.D.MADHUKANNAN B.Arch.,AIIA.,FIV.,Mem.C.A.,
 REGISTERED ARCHITECT - COA
 EMPANELLED ARCHITECT - INDIAN BANK.
 GOVT. REGISTERED VALUER - INCOME TAX
 Plot No.19.20 Agasthiyar Street, Opp Road to Indus Hospital,
 Viswanathapuram, Madurai- 625014, Tamilnadu.

I N D I A N B A N K

CHETIYARPATTI BRANCH (NEW PREMISES)



REFERENCE:

FHGP - FULL HEIGHT GLAZED PARTITION
 FHP - FULL HEIGHT PARTITION
 LHP - LOW HEIGHT PARTITION
 F.H.S - FULL HEIGHT STORAGE
 G.L.A - GOLD LOAN APPRAISER
 O.T - OFFICER'S TABLE
 C.T - CLERICAL TABLE
 R.S - ROLLING SHUTTER
 C.G - COLLAPSIBLE GATE
 W.G - WICKET GATE
 M.D - MAIN DOOR (6'0"X7'0")

D - DOOR (3'0"X7'0")
 D1 - DOOR (2'6"X7'0")
 W - WINDOW (4'0"X4'0")

NOTE:

WINDOW SILL HEIGHT - 3'0"
 LINTEL HEIGHT - 7'0" & 8'0"
 ROOF HEIGHT LVL - 11'9"
 ROOF BEAM BOTTOM LVL - 10'6"

CARPET AREA DETAILS:
 FOR BRANCH : 1205.00 sq.ft
 FOR ATM : 90.00 sq.ft

TITLE

FALSE CEILING



DRAWN	- R.M
JOB NO	- 92-23
DATE	- 21.05.2024
SCALE	- N.T.S.
SHEET NO	- 02

MATHURA ASSOCIATES

ARCHITECTURAL & STRUCTURAL CONSULTANT
 INTERIOR DESIGNS - VALUERS - LANDSCAPE

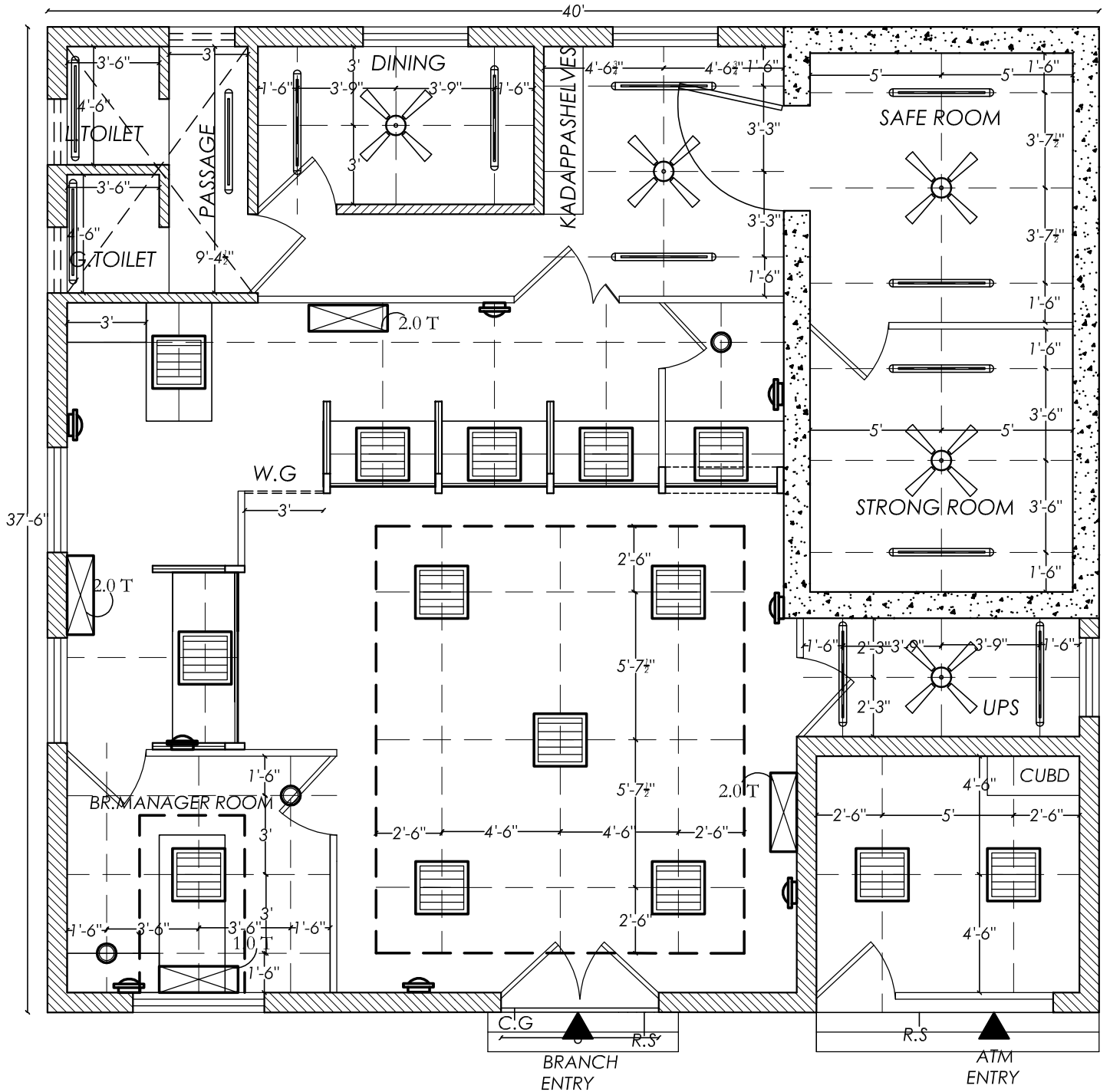
Contact :
 99658-81704
 96006-31864



Proprietor :
Ar.D.MADHUKANNAN B.Arch.,AIIA.,FIV.,Mem.C.A.,
 REGISTERED ARCHITECT - COA
 EMPANELLED ARCHITECT - INDIAN BANK.
 GOVT. REGISTERED VALUER - INCOME TAX
 Plot No.19.20 Agasthiyar Street, Opp Road to Indus Hospital,
 Viswanathapuram, Madurai- 625014,Tamilnadu.

I N D I A N B A N K

CHETIYARPATTI BRANCH (NEW PREMISES)



REFERENCE :

- A/C - 2 Ton - 3 NoS.
A/C - 1 Ton - 1 Nos.
- Wall mounted fan - 8 Nos
- Recessed down light LED
(2 x 18 W) - 3 + 2 Nos
- Exhaust fan - 3 Nos
- 4' Ceiling fan - 5 Nos

- Tubelight - 13 Nos
- 2'0" x 2'0" LED Recessed
12+2 Nos

NOTE :
 WINDOW SILL HEIGHT - 3'0"
 LINTEL HEIGHT - 7'0" & 8'0"
 ROOF HEIGHT LVL - 11'9"
 ROOF BEAM BOTTOM LVL - 10'6"

CARPET AREA DETAILS :
 FOR BRANCH : 1205.00 sq.ft
 FOR ATM : 90.00 sq.ft

TITLE

ELECTRICAL LAYOUT



DRAWN	- R.M
JOB NO	- 92-23
DATE	-21.05.2024
SCALE	- N.T.S.
SHEET NO	- 04

MATHURA ASSOCIATES

ARCHITECTURAL & STRUCTURAL CONSULTANT
 INTERIOR DESIGNS - VALUERS - LANDSCAPE

Contact :
 99658-81704
 96006-31864



Proprietor :
Ar.D.MADHUKANNAN B.Arch.,AIIA.,FIV.,Mem.C.A.,
 REGISTERED ARCHITECT - COA
 EMPANELLED ARCHITECT - INDIAN BANK.
 GOVT. REGISTERED VALUER - INCOME TAX
 Plot No.19.20 Agasthiyar Street, Opp Road to Indus Hospital,
 Viswanathapuram, Madurai- 625014,Tamilnadu.