

**SCHEDULE FOR THE  
ELECTRICAL WORKS**

**AT**

**M/s. INDIAN BANK,  
PASUR BRANCH,  
ANNUR, TAMIL NADU.**



**TENDER FOR THE ELECTRICAL WORKS**  
**AT M/s. INDIAN BANK, PASUR BRANCH, ANNUR, TAMIL NADU.**

S.No	Description	Qty	Unit	Rate (Rs.)	Amount (Rs.)
1	Supply & laying of following PVC insulated copper wire in suitable PVC conduit pipe/PVC channels as per site condition) necessary clampings etc ., for branch				
a	4C x 25 sq mm AL Ar UG Cable from EB Mains to main power panel. (Existing to be retained)	-	mtrs	400.00	NA
b	4C x 6 Sqmm + 1R x 4.0 Sqmm copper cable from main power panel to UPS input Mains 4 point & AC DB	50.00	mtrs		
c	4C x 4 Sqmm + 1R x 2.5 Sqmm copper cable from main power DB to Lightning DB's .	20.00	mtrs		
d	2 x 4 Sqmm + 1R x 2.5 Sqmm copper wire for Raw Power DB's, UPS Output DB's & AC DB, AC DB to AC units	295.00	mtrs		
e	2 x 2.5 sq mm + 1 x 1 sq mm MCB to computer UPS.	360.00	mtrs		
f	2 x 2.5 sq mm + 1 x 1 sq mm RAW power & lightings (including sinage lighting)	320.00	mtrs		
g	1 x 6 sq mm from dedicated UPS Earth pit to UPS	110.00	mtrs		
2	Supply & Wiring using 3 run of 4 sq mm and 2 run of 2.5 sq mm 600 V grade. PVC insulated FR copper wire through 25 mm dia PVC conduit with all necessary accessories like bend collar, saddle, screws etc. complete - from main panel to UPS mains.	35.00	mtrs		
3	Supply & installation of 63 A 4 P change over switch with SS enclosure	1.00	No		
4	Supply & intallation of UPS Power 3Nos 6 A 3 Pin sockets, 1No 16A switch in suitable box - modular type. Work stations -10 Nos., Server - 2 No. 6A (5 pin socket) Manager cabin - 1 No.,	13.00	Nos		
5	16 A 3 Pin Metal Plug & socket with 1No 25A SP MCB for A/C	7.00	No		
6	Supply & intallation of RAW power for BC , POF, OTB and front office tables 16 A 3 pin sockets. 1 no 6 A switch in suitable box modular type	8.00	Nos		
7	Supply & wiring for light points/ fan point wiring using 3 x 1.5 sq mm PVC insulated copper wire in suitable PVC conduit pipe with all with all accessories - concealed in wall including supply and fixing of switch boxes, 6 A switches, ceiling rose etc.	65.00	points		
8	Supply, Fixing and wiring of wall fan with 1 No 6A socket with 6A Switch with all necessary wirings.(Modular type) (Burglar alarm & CCTV camera points at BM Cabin)	11.00	points		

**NET TOTAL AMOUNT (A)**

(Rupees:

**Rs:**

Only).

**Notes:** All items are excluding of GST and other applicable taxes, unless specified



**TENDER FOR THE ELECTRICAL FITTING WORKS**  
**AT M/s. INDIAN BANK, PASUR BRANCH, ANNUR, TAMIL NADU.**

S.No	Description	Qty	Unit	Rate (Rs.)	Amount (Rs.)
<b>I</b>	<b><u>Fixtures &amp; Fittings :</u></b>				
	Supply, delivery at site, receiving, storing, handling, carriage at site, assembling, erection including the drop down rods, chains, hooks & accessories connecting, testing and commissioning of the following Ceiling / wall mounted light fixtures including the lamps etc complete. (All fixtures to be of Wipro/ Philips/Havells make only and lamps of GE / Osram make only). (the rates are net and inclusive of cutouts and fixing).				
1)	Supply, fixing & connecting of following MCB DBs with necessary interconnections. Double Door type - concealed in wall as per site condition				
a)	MAIN POWER MCB DB: This DB comprising of the following : Incoming: 125 A 4 P MCCB(25 Kilo amps) 1 No.				
(i)	63 A TP MCB = 1 for A/C				
(ii)	40 A TP MCB = 3 for ,UPS,Lightning,Raw power				
(iii)	63 A TP MCB = 1 for Spare				
	8way TPN vertical D.Door DB For MCCB Provision.	1.00	set		
b)	Lighting MCB DB : incoming: 40 A 4 P MCB - 1 No : Outgoing 10 A SP MCB - 9 Nos: Enclosure: 4 way TPN DB	1.00	set		
c)	UPS INPUT MCB DB: Incoming: 40 A 4 P MCB 1 No Outgoing: 20 A 2 P MCB 2 Nos Enclosure: 4 Way TPN DB	2.00	set		
d)	UPS OUTPUT CIRCUIT MCB DB: incoming 40 A 2 P MCB 1 Nos Outgoing: 10 A SP MCB 7 Nos Enclosure: 4 way 12 W SPN DB	2.00	set		
e)	RAW POWER MCB DB: incoming 40 A 2 P MCB 1 Nos Outgoing: 10 A SP MCB 8 Nos Enclosure: 4 way TPN DB	1.00	set		
f)	AC POWER MCB DB: Incoming: 40 A 4 P MCB 1 No Outgoing: 20 A 2 P MCB 7 Nos Enclosure: 6 Way vertical DB	1.00	set		
a)	1 x 33 w LED square downlight Recess Mounted (Philips RC 375 B 30S) (2' x 2' fitting) (Incl Frame)	9	No		



S.No	Description	Qty	Unit	Rate (Rs.)	Amount (Rs.)
b)	1 x 22 w Philips Square Ultraslim (AL body) 9"x 9"	18	Nos		
c)	1 x 18 w LED Ultraslim Round light (Al body)	0	Nos		
d)	1 x 18 w LED Ultraslim Squire light (Al body)	18	Nos		
e)	1 x 5 w LED Ultraslim spot light (Al body)	5	Nos		
f)	1 x 7 w LED Round Spot light COB+ (Al body)	4	Nos		
g)	CG Wall Mount Fan (Crompton / Usha)	11	Nos		
h)	48" CG Highspeed Ceiling Fan (Crompton / Usha / Havells)	5	No		
i)	1 x 21 w LED Tube fitting Smart Bright 4feet (Al body)	11	No		
	Exhaust fan (9" exhaust almonored)	3	Nos		
	Including provision for Opening & plstring wherever required)				(Toilet & UPS Battery Room)
<b>II General :</b>					
a)	Rectifying, Testing, Erection and Commissioning of existing light points with fittings	5	Nos		

**TOTAL AMOUNT**

*(In words: Rupees*

*Rs.  
only)*

**Notes:** All items are excluding of GST and other applicable taxes, unless specified



**SCHEDULE FOR THE  
DATA CABLING WORKS**

**AT**

**M/s. INDIAN BANK,  
PASUR BRANCH,  
ANNUR, TAMIL NADU.**



**TENDER FOR THE DATA CABLING WORKS**  
**AT M/s. INDIAN BANK, PASUR BRANCH, ANNUR, TAMIL NADU.**

S.No	Description	Qty	Unit	Rate (Rs.)	Amount (Rs.)
<b>I Telephone And Data Cabling Works</b>					
1	Supply & laying of I.O Telephone point including cable in suitable PVC conduit pipe	3	Nos		
2	Supply & laying of 2 pair Telephone cable in suitable PVC conduit pipe	215	mtrs		
3	Supply & installation of RJ 11 Telephone socket(modular type)	9	Nos		
4	Supply & laying of 10 pair Telephone cable for Leased/ISDN Line including casing capping etc., Complete.	160	mtrs		
5	Supply & installation of 10 pair krone block in suitable MS Enclosure with locking arrangements	1	No		
6	Supplying & Fixing of HCL CAT 6 10/100/1000 Mbps UTP Cable including the cost of laying the cable & PVC conduit pipe etc.complete (including ATM)	340	mtrs		
7	Supply & installation of RJ 45 information Outlets (including ATM)	12	Nos		
8	Supply & providing of RJ 45 HCL CAT 6 patch cords - 3 Feet	12	Nos		
9	Supply & providing of RJ 45 HCL CAT 6 patch cords - 7 Feet	12	Nos		
10	Supply & Fixing of 12" 9U Rack with power manager & Cable Manager with fasteners including the cost of rack fixing etc.complete	1	No		
11	Supply & Fixing of HCL 24 Port 10/100/1000 Mbps Fast Ethernet Switch	1	No		
12	Supplying & Fixing of HCL CAT 24 Port Patch Panel including punching & Fixing etc.complete	1	Nos		

**TOTAL AMOUNT**

**Rs:**

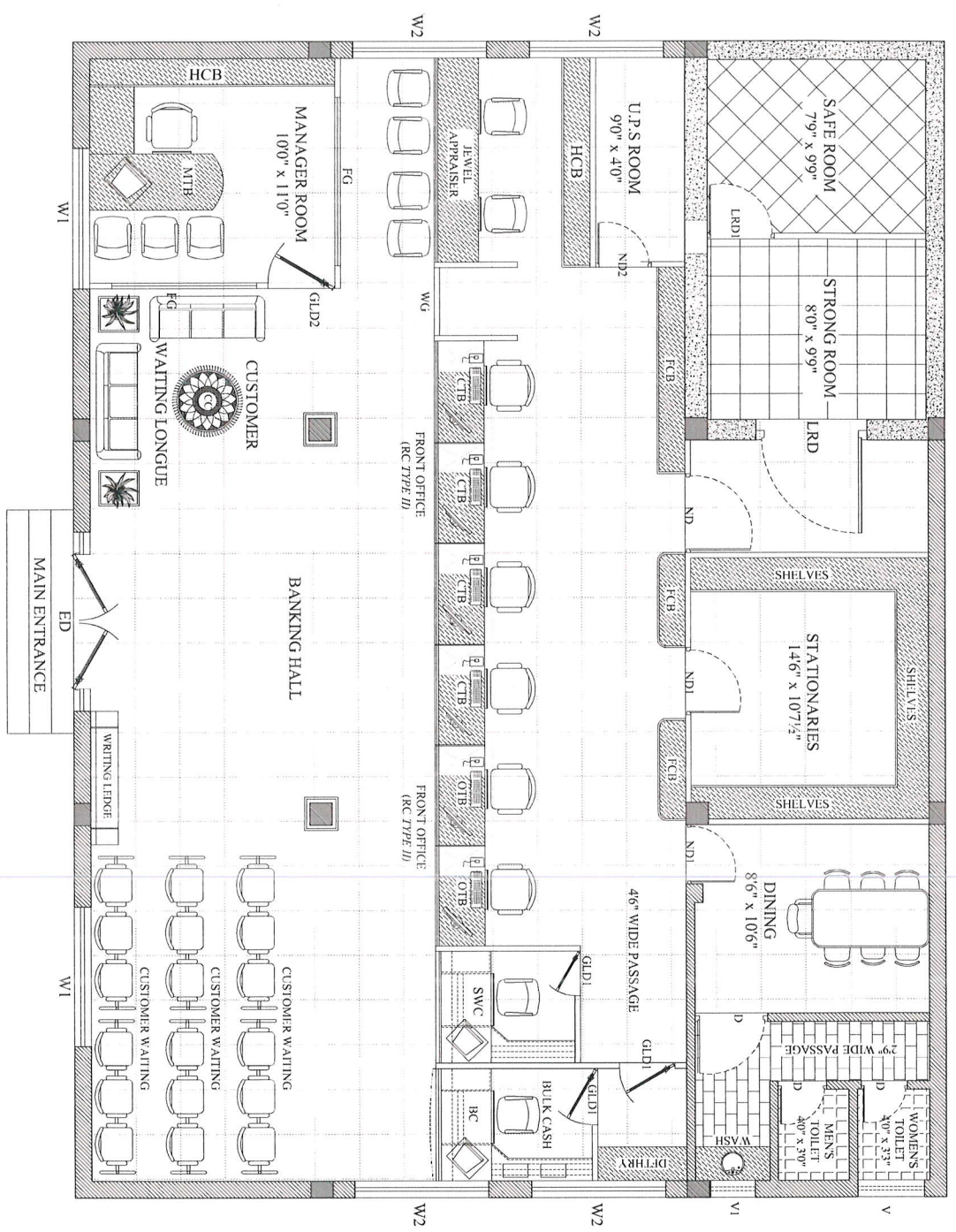
(Rupees:

Only)

**Notes:** All items are excluding of GST and other applicable taxes, unless specified



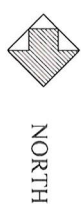




LEGEND	
RC TYPE I	RUNING COUNTER TYPE I
RC TYPE II	RUNING COUNTER TYPE II
BCI	BULK CASH(COUNTER/CABIN
LSC	LINE OF SUNKEN CEILING
FCB	FULL HEIGHT CABINET
HCB	HALF HEIGHT CABINET
MTB	MANAGERS TABLE
OTB	OFFICERS TABLE
CC	CARPET

SCHEDULE OF JOINERY	
MD	ENTRANCE DOOR 80" x 70"
ALD	ALUMINIUM DOOR 26" x 70"
GLD	GLAZED DOOR 30" x 70"
ND	NORMAL DOOR 36" x 70"
ND1	NORMAL DOOR 30" x 70"
ND1	NORMAL DOOR 26" x 70"
WG	WICKET GATE 30" x 50"
FG	FIXED GLAZING 60" x 46"

PROPOSED INTERIOR LAYOUT PLAN FOR  
M/s. INDIAN BANK,  
PASUR BRANCH, ANNUR.



NORTH

DETAIL:

TITLE: SCHEME DRAWING - INTERIOR LAYOUT PLAN  
GROUND FLOOR PLAN - OPTION - IV

SCALE: GRID OF 20" x 20"

ALL MEASUREMENTS ARE IN FEET  
& INCHES  
THE DRAWING STRICTLY TO BE READ  
AND NOT MEASURED

DRAWN BY:  
SAKTHI

CHECKED BY:  
ANAND

DATE: 02.03.2022

PLATE NO: INDBK/PASUR/SD/INT/GF/04

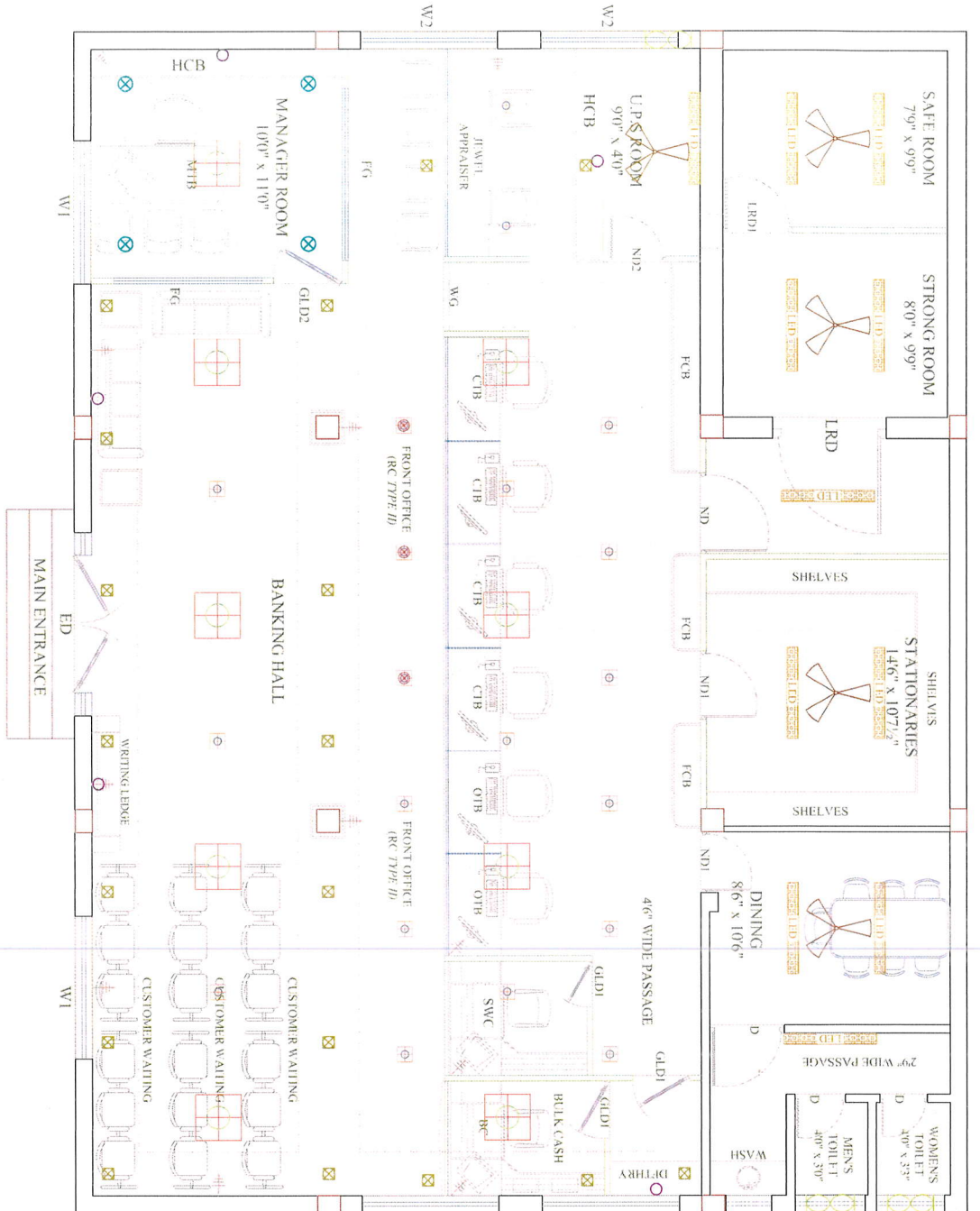
ARCHITECT  
S.VIJAY ANAND B.Arch, Mem COA, AIIA.

AVANT GARDE

DESIGN CONSULTANTS

ARCHITECTURE & INTERIORS  
#1281, TRICHY ROAD  
COMBATORE - 641 018  
Ph: 2301 246, Fax: 2301 191





# LEGEND:

	1 x 36 w LED (2' x 2') Square downlight	9 Nos.
	1 x 22 w LED Ultralim Square downlight	18 Nos.
	1 x 18 w LED Round down light	00 Nos.
	1 x 18 w LED Ultralim Square down light	18 Nos.
	1 x 5 w LED Spot lights	05 Nos
	1 x 7 w LED Round Spotlight	04 Nos.
	Ordinary Parting fitting (wipro)	11 Nos.
	Ceiling Fan	05 No
	Exhaust Fan	3 Nos.
	Wall Fan	11 Nos.

NOTES :

PROPOSED INTERIOR LAYOUT

PLAN FOR M/s. INDIAN BANK,

R.S.PURAM BRANCH,

COIMBATORE, TAMILNADU.

TITLE:

ELECTRICAL LAYOUT PLAN  
GROUND FLOOR PLAN - OPTION-IV

SCALE:

N.T.S

AREA :

DRAWN BY:

SAKTHI

CHECKED BY:

ANAND

DATE : 08.03.2022

PLATE NO: INDBK/PASUR/ED/GF/ELE/04

ARCHITECT

A.C.S VILAV ANAND B.Arch. Mem COA, AIIA.

AVANT GARDE

DESIGN CONSULTANTS

ARCHITECTURE & INTERIORS

#1281, TRICHY ROAD

COIMBATORE - 641 001

Ph: 2301 2461 Fax: 2401 191

