



**INDIAN BANK**  
**ZONAL OFFICE CHENNAI – NORTH**  
**Premises & Estate Department**  
**No: 2, 2nd Floor, Krest Building,**  
**Jehangir Street, Chennai - 600 001**

**PROPOSED INTERIOR WORKS FOR MERIDIAN HOSPITAL  
ATM OFF SITE OF VINAYAGAPURAM BRANCH,  
CHENNAI – 600099**

**(Furnishing, Electrical, Air Conditioning work)**

**CONSULTANTS:**

**M/S. ARUN ARCHITECTS,  
NEW NO: U-12 OLD NO. U-27,  
10<sup>th</sup> STREET, ANNA NAGAR,  
CHENNAI - 600 040.  
PH : 044-72684926  
MOBILE : 9444016095,6382494637**

**General rules**

**SCHEDULE OF QUANTITIES  
FURNISHING WORK**

Sl. No	Description of Item	Qty.	Rate	Per Unit	Amount Rs.
1	<p>Providing and fixing suspended gypboard false ceiling, which includes providing &amp; fixing GI perimeter channels of size 27mm, 0.5mm thick having one flange of 20mm &amp; another flange of 30mm along with perimeter of the ceiling, screws fixed to brick wall / partitions with the help of rawl plugs &amp; screws. Then suspending GI intermediate channels of size 45mm, 0.9mm thick with two flanges of 15mm each from the soffit at 1200mm centers with steel GI hanger of which 25mm, 0.5mm thick fixed to soffit with GI cleat &amp; steel expansion fastners. Ceiling section of 0.5mm thickness having knurled wedge of 51.5mm and two flanges of 25mm each with leafs of 10.5mm are then fixed to the intermediate channel with the help of connecting clips and in direction perpendicular to the intermediate channel at 450mm centers. 12.5mm tapered edge gypboard is then screwed</p> <p>fixed to ceiling section with 25mm dry wall screws at 230mm centers screw fixing will be done mechanically either with screw driver or drilling machine with suitable attachment. Finally the tapered and squared edges of the boards are jointed at finished to give a flushed finish with requisite jointing compound, paper tapes, finished and premier suitable for Gypsum plaster boards. The entire work shall be finished as per instructions of the Architect. No extra cost shall be entertained in completing the job in all respect. The ceiling to finished with 2 coats of approved colour of plastic emulsion paint over a primer coat.</p>	120		1 Sft	
2	<b>MAIN DOOR ( 3'-6" X 7'-0")</b>				
	Supply and fixing entrance door to the ATM using 12mm thick clear float glass in powder coated aluminium frames of size 100MM X 75MM of approved sections 2.0mm thick as per bank's specifications including fixed glazing.	40		1 Sft	
3	<b>SOLID FULL HEIGHT PARTITION</b>				
	Providing and fixing in position solid Full height partition in frame work including door in 2'-0" X 2' - 0" grid (horizontally and vertically) comprising of 50mm X50mm aluminium section 2mm thick with 6mm thick MR Grade IS (303) on both sides finished with 1mm thick laminates of approved make and colour. Item to include 2" X 2" T.W. member for door frame. All exposed T.W. surfaces to be finished in polish of matching laminate colour as directed including all necessary Stainless steel finish fittings/ hardware, door closers, Godrej locks and wood preservative paint etc. as per list of approved material and as approved by the Project Consultant / Bank complete in all respects. (Note : In case of false ceiling, the vertical T.W. members to be fixed with pucca ceiling but the area of partition payable will be below the false ceiling only)	85		1Sft	

Sl. No	Description of Item	Qty.	Rate	Per Unit	Amount Rs.
4	<b>Partition door</b>				
	Supply & fixing doors in partitions of size 3'0" x 7'0" made of 35mm thick solid are flush doors of approved manufacture, finished with approved colour of 1mm thick decorative laminate on both sides. The edges of the door lipped with TW frames of size 2" x 1/2" and finished to desired wood effect by melamine polish after necessary surface preparation. The doors to be provided with a vision panel of size 0'9" x 0'9" fixed at suitable height made of 55mm thick clear float glass held in TW frames of size 1/2" x 1/2". The frames finished in the same manner as the TW frames used for lippings of door edges. The door to be complete with all accessories such as door closer, handle and lock of approved manufacture and quality	21		1 Sft.	
5	<b>PANELING TO WALLS &amp; SHUTTER BOXING</b>				
	Supply and installation of wall paneling made of Aluminium composite panel (ACP) of 4 mm thickness and approved manufacture (GREY colour) on a backing of 2" x 1 1/2" aluminium frame work 2mm thickness in section, including all installation complete.	380		1Sft	
6	Supply & fixing waste basket of 9" dia (Stainless Steel)	1		1 No.	
	<b>Total ( Excluding GST)</b>				

**Place:**

**Date:**

**Signature of contractor with seal**

**SCHEDULE OF QUANTITIES  
ELECTRICAL WORK**

Sl.No	Description of Item	Qty.	Rate	Per Unit	Amount (Rs.)
<b>1</b>	<b>LIGHTING AND POWER WIRING</b>				
1.1	Supply, wiring, testing and commissioning of Light points with 3R 1.5Sqmm, PVC insulated FRLS copper wire in a PVC conduit for P/N/E along with Modular 6A one way switch with molded front plate GI anodized enclosure and other associated accessories as required as per the site conditions, etc..				
a)	One light controlled by One switch.	5		P/Pt.	
b)	Switch board plug print	2		P/Pt.	
c)	Exhaust Fan Point	1		P/Pt.	
1.2	Supply, laying, testing and commissioning of 3R of 2.5Sqmm PVC insulated FRLS PVC copper wire in as required at site in 2mm thick PVC conduit for lighting mains	30		P/Mtr	
1.3	Supply, laying, testing and commissioning of 3R of 2.5Sqmm PVC insulated FRLS PVC copper wire in as required at site in 2mm thick PVC conduit for UPS socket. Not more than 2 UPS Point to be connected to one circuit, etc.,	30		P/Mtr	
1.4	Supply, laying, testing and commissioning of 3 runs of 2.5Sqmm PVC insulated FRLS PVC copper wire in 2mm thick PVC conduit as required at site for Raw power sockets. Not more than 4work station point to be connected to one circuit.	30		P/Mtr	
1.5	Supply, laying, testing and commissioning of 2 runs of 4Sqmm. And 1 run PVC insulated FRLS multistrand copper wire in PVC conduits as required at site for AC power.	30		P/Mts	
1.6	Supply, laying, testing and commissioning of 4 runs of 6 Sqmm and 1 run of 2.5 sqmm wire PVC insulated FRLS multistrand copper wire in 2mm thick PVC conduit as required at site for UPS/Lighting Main	20		P/Mts	
1.7	Supply, laying, testing and commissioning of 2 runs of 6 Sqmm and 1 run of 2.5 Sqmm wire PVC insulated FRLS multistrand copper wire in 2mm thick PVC conduit as required at site for Raw power sockets. Not more than 4work station point to be connected to one circuit.	25		P/Mts	
<b>2</b>	<b>POWER PLUGS AND SOCKETS</b>				
2.1	Supply and fixing of 1 nos 16 A switch controled 1 nos 16 /6 A socket with switch modular with molded front plate with PVC enclosure and other accessories associated chasing embedding rough plastering as required as per the conditions.	2		P/No	
2.2	Supply and fixing of 6A switch, sockets modular type with molded front plate GI anodized enclosure and other accessories associated chasing embedding rough plastering as required as per the site conditions.	3		P/No	

Sl.No	Description of Item	Qty.	Rate	Per Unit	Amount (Rs.)
2.3	Supply and fixing of 16/6A, socket with switch modular with molded front plate GI anodized enclosure and other accessories associated chasing embedding rough plastering as required as per the conditions.	3		P/No	
<b>3</b>	<b>DISTRIBUTION BOARDS</b>				
3.1	Supply, erection, testing and commissioning of <b>Three phase</b> 8 WAY, SPN MCBDB double door type, IP 42 powder coated for UPS with 63A DP MCB – 1No as <b>INCOMER</b> 10A SP MCB – 6 Nos. as <b>OUTGOING</b> Including all interconnections & accessories etc	1		P/Set	
3.2	Supply, erection, testing and commissioning of 63A DP MCB with Double door enclosure for UPS input/Output control.	2		P/no	
3.3	Supply & Installation of 32A Metal Clad Socket with top in a specified company manufactured box with suitable rating MCB for connecting A/C points	2		P/No	
4.0	<b>LIGHTING FITTINGS</b>				
4.1	Supply & fixing of the following light fittings with all accessories, tubes, ballast's, suspension wires from ceiling, false ceiling, anchor fasteners, chains, bolts, nuts etc.,				
4.2	Supply & Installation of 1 x 36 watts 2' x2' LED light fitting with fixture ( <b>Wipro or Pilips</b> )	1		P/No	
4.3	Supply & Installation of 1 x 15 watts LED light fitting with fixture ( <b>Wipro or Pilips</b> )	4		P/No	
4.4	Supply and installaiton of 9" Ø exhaust fan for UPS room including all civil works complete.	1		1No	
<b>5</b>	<b>CABLES</b>				
	Supply, Laying, testing and commissioning of PVC/LT insulated 1.1KV grade Armored conductor cables of following sizes clamping on the wall as per the site condition.				
5.2	3.5C x 25 Sqmm. Al. Ar. Cable	15		P/Mtr	
<b>6</b>	<b>END TERMINATION</b>				
	Supply & terminating the ends of cables of following sizes using seimens type single compression cable glands, crimping type Aluminum/Copper sockets of required size, gland earthing clips complete.				
6.1	3.5C x 25 Sqmm. Al. Ar. Cable/ 4 Run 6Sqmm	2		P/No	
7.00	<b>EARTHING</b>				
7.1	Supply, installation, testing and commissioning of 2.5Mts long 40mm dia 'B' class GI earth electrode with 600 x 600 x 3mm copper plate, funnel clamps bus etc including excavation refilling with sand/charcoal/ salt combinations complete as required including heavy duty cast iron cover and all associated civil works like construction of chamber and rough plastering etc as required.	1		P/No	

Sl.No	Description of Item	Qty.	Rate	Per Unit	Amount (Rs.)
7.2	Supply, laying of 16Sqmm PVC FRLS copper wire in suitable PVC conduit with all accessories as required.	30		P/Mtr	
7.3	Supply, laying of 8 SWG bare copper wire	40		P/Mtr	
8	<b>VOICE AND NETWORK</b>				
8.1	<i>Supply and laying of 0.5mm two pair copper telephone cable in an existing conduit, etc.,</i>	20		P/Mtr	
8.2	<i>Supply and fixing of RJ11 telephone jack with front plate for all workstations.</i>	2		P/No	
8.3	<i>Supply and laying of E CAT6 Network cable in the In PVC Conduit</i>	30		P/Mtr	
8.4	<i>Supply and fixing of RJ45 Network socket with front plate and base box for computer workstations.</i>	2		P/No	
8.5	<i>Supply and fixing of 3 feet patch cord</i>	2		P/No	
8.6	<i>supply and fixing of 7 patch cord</i>	2		P/No	
	<b>Total (Excluding GST)</b>				

**Place:**

**Date:**

**Signature of contractor with seal.**

**SCHEDULE OF QUANTITIES**

**AIR CONDITIONING WORK**

<b>Sl. No</b>	<b>Description</b>	<b>Qty</b>	<b>Rate</b>	<b>Unit</b>	<b>Amount (Rs.)</b>
1	<p>Supplying, installation, testing and commissioning of <b>3 -Star rated Hi-wall split air conditioner of 1.0 TR capacity (Voltas, Carrier make )</b> with On Off Timer along with wireless remote controller including providing and laying the standard length of 3m copper, electrical and 25mm dia CPVC drain piping including Initial refrigerant charge suitable for 10 Mtrs distance between IDU and ODU along with drilling the holes and packing and making good the damaged surfaces good comprising of the following.</p> <p>i) Indoor unit consisting of evaporator coil, ( <b>Copper Coil</b> ) blower fan with motor, filters, insulated drain pan etc.</p> <p>ii) Outdoor unit consisting of hermetically sealed Rotary Compressor to operate on 230 V, Single Phase, 50 Hz AC Supply, Anti Corrosive Coated Condensor Coil ( <b>Copper Coil</b> ) with fan and motor, interconnecting refrigeration piping, starters/controls/cutouts/relays etc., , mounted inside a powder coated sheet metal cabinet duly treated for corrosion protection..including control cable connection between IDU to ODU including stands <b>The rate shall be inclusive of MS stands as per vendor specifications to mount the out door units.</b></p>	2		INo	
2	Charges for providing additional copper pipes (one circuit) for the above split units with necessary insulation and with adequate pvc insulated copper wire from indoor to outdoor units concealed and taken through beyond the standard 4m length.	10		Rmt	
3	Charges for providing additional 25mm dia CPVC drain pipe concealed / surface mounted and taken through wall/ partition beyond the standard 4m length for the above split units.	10		Rmt	
4	Supply, installation, testing and commissioning of wall mounting 5 KVA stabilizers ( <b>V- Guard make</b> ) for 2 .Tr Hi-Wall Split Air Conditioning units with input voltage range of 170-270 Volts and output 220 +/- 10% as required	2		Each	
5	S & I Timer Switch with Contactor (For AC)-25/32 A	1		P/No	
6	Supply & installation of MS (Mild Steel) cages made of 1/2" x 1/2" MS Square bars for outdoor units of size 3'-6" x 2'6" including all civil works, an openable arrangement in top and painting with 2 coats of synthetic enamel paint over a primer coat. including scaffolding charges	2		Each	
	<b>Total ( Excluding GST)</b>				

**Place:**

**Date:**

**Signature of contractor with seal**

**LIST OF TYPE AND MAKE OF MATERIALS TO BE USED**

<b>Sl. No.</b>	<b>Description</b>	<b>Material</b>	<b>1.Colour shade 2. Code No. 3. Name of Manufacturer</b>
1	False ceiling – Banking hall	12mm thick Gypsum Board & 12mm thick Mineral fiber tile*	1.White 2. India Gypsum & Armstrong , Gyproc, USG ceiling or equivalent*
2	False ceilings - Cabins	12mm thick Mineral fiber tile* 600mm x 600mm	1.White . Armstrong, Gyproc, USG ceilings or equivalent
3	Partitions	Frame work: Made of 2” x 1½” aluminium Section 1.5 mm thick ness	1. 2. 3.
		Plywood : 8mm thick Commercial plywood with ISI certification	1. Century ply 2. Sharon ply 3. Assam prestige
		Laminates: 1.0mm thick laminate*	1. Fusion Maple (wood finish)* 2. 3.Formica, Euro lam, Green lam, Merino or equivalent*
4	Counters/tables	Plywood:19mm/12mm/6mm thick commercial plywood with ISI certificate	1. Century ply 2. Sharon ply 3. Assam prestige
		Laminates:1.5mm thick for table top and other s 1.0mm thick laminate* 25mm thick post formed 0.8mm thick decorative laminate.	1. Fusion Maple (wood finish)* 2. 3.Formica, Euro lam, Green lam, Merino or equivalent*
5	Column cladding	MDF / Calcium Silicate board	1. Fusion Maple (wood finish)* with regular skirting* .Formica, Euro lam, Green lam, Merino or equivalent*
6	Wall painting	Acrylic Emulsion	1.Sugarcane 2. 3. Asian paints, Berger paints, ICI, Nerolac or equivalent
7	Ceiling painting	Premium Emulsion	1.White/ Raindrops* 2. 3.Asian Paints, Berger Paints, ICI, Nerolac or equivalent*
8	Pinup Board for work station	Fabric	1.Maroon 2. 3.Velvet or equivalent
9	Sofa sets	Fabric – back & sides	1.Maroon

**List of materials**

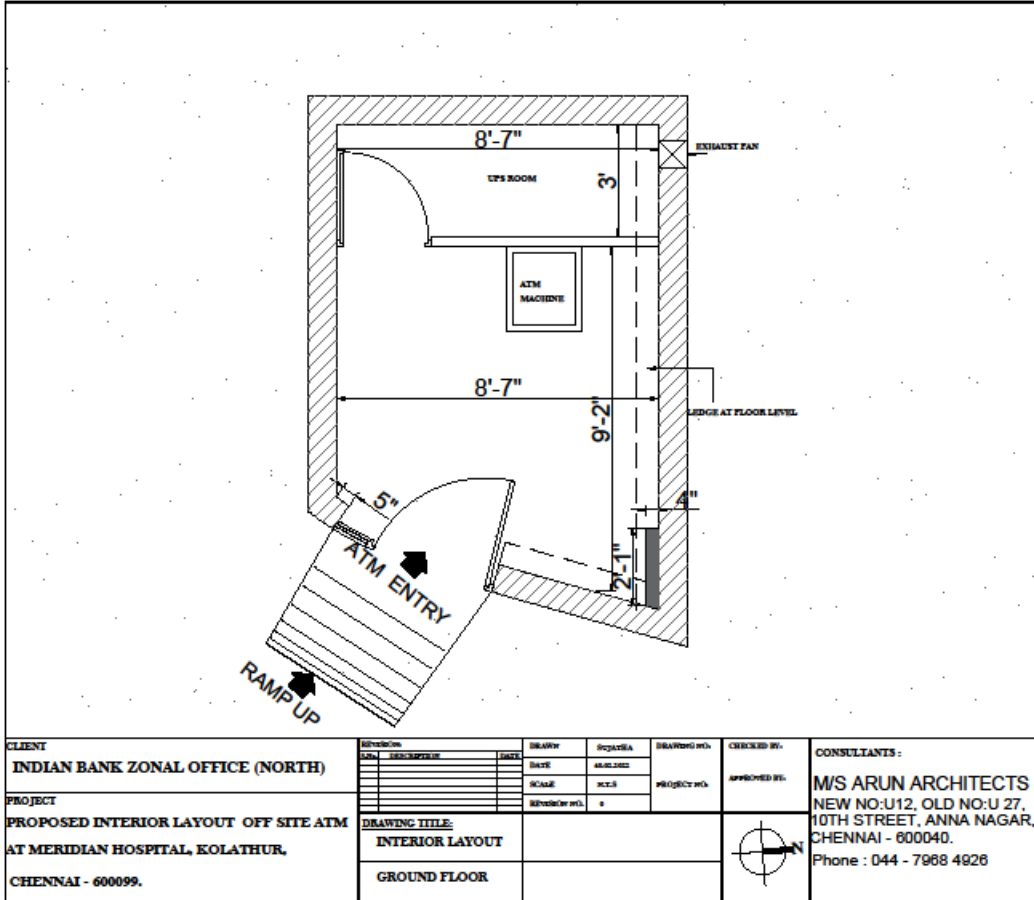



		Visitor seating	1. SS perforated* 2.3 seated with end arm airport chair* 3.
10	Chairs	Fabric	1.Maroon 2. 3.Godrej,wipro, Featherlite or equivalent*
11	Painting exterior	Texture – Classic or fine*	1.Grey – white 2. 3.Heritage, Spectrum, Alltek or equivalent
		Exterior emulsion	1.Grey/White 2. 3.Asian Paints, Berger Paints, ICI, Nerolac or equivalent*
12	Painting for Rolling shutter	Synthetic enamel paint	1.Oxford Blue 2. 3.Asian paints,ICI Paints, Nerolac or equivalent*
13	Vertical blinds	Fabric*	1.Trident 2. 3.MAC, Universal, Vista or equivalent*

## LIST OF TYPE AND MAKE OF MATERIALS TO BE USED

(ELECTRICAL WORK)

	<b>Approved Make</b>	<b>Make Offered by the Tenderer</b>
Fuse switches with HRC	<b>G.E/ABB</b>	
PVC insulated copper conductor – FRLS Grade	<b>Polycab / Finolex</b>	
PVC conduit – Medium thick	<b>Vasavi / Avon / ITP</b>	
DBs	<b>NCI/ Wipro North west</b>	
MCBs, ELCBs, RCBOs	<b>MDS/ Wipro North west</b>	
Cables	<b>Wipro Suraksha, Finolex, Havells</b>	
Metal clad sockets	<b>ABB/ MDS</b>	
6 – 16 A single pole switches, sockets, ceiling roses etc.	<b>Wipro (Nowa), Legrand Mosaic, MK,Blenze</b>	



CLIENT <b>INDIAN BANK ZONAL OFFICE (NORTH)</b>	REVISION	DRAWN	DATE	SCALE	PROJECT NO.	CHECKED BY	CONSULTANTS: <b>M/S ARUN ARCHITECTS</b> NEW NO:U12, OLD NO:U 27, 10TH STREET, ANNA NAGAR, CHENNAI - 600040. Phone : 044 - 7968 4926
	NO.	DESCRIPTION	DATE	SCALE	PROJECT NO.	APPROVED BY	
PROJECT <b>PROPOSED INTERIOR LAYOUT OFF SITE ATM AT MERIDIAN HOSPITAL, KOLATHUR, CHENNAI - 600099.</b>	DRAWING TITLE:						
	INTERIOR LAYOUT						
	GROUND FLOOR						