

<p>अंचल कार्यालय : सतना द्वितीय तल, इलाहाबाद बैंक भवन, जयस्तंभ चौक, सतना- 485001 दूरभाष: 07672-414413</p>	<p>इंडियन बैंक  Indian Bank इलाहाबाद ALLAHABAD •YOUR OWN BANK # ALWAYS WITH YOU•</p>	<p>ZONAL OFFICE : SATNA 2nd Floor, Allahabad Bank Building, Jai Stambh Chowk, Satna-485001 Phone : 07672-414413</p>
<p>संपत्ति विभाग</p>	<p>Email : z747@indianbank.co.in</p>	<p>Property Department</p>

**INVITATION OF QUOTATIONS FOR FURNISHING AND ELECTRICAL WORKS**

Indian bank, Zonal Office, Satna invites quotations in the prescribed format for furnishing and electrical work at the alternate premises of our **Naugai branch (Distt. Singrauli)** from the contractors who are already empanelled with our Bank. Tenders/quotations are non-transferable and the formats are available with this notice and at our Zonal Office, Satna:

Address:-  
Indian Bank,  
Zonal Office Satna,  
Allahabad Bank building,  
Jaistamb Chowk,  
Satna-485001, Madhya Pradesh.

The quotations will be available between 11:00am to 6:00pm from **18.02.2022 to 05.03.2022** and at our Bank's website [www.indianbank.in](http://www.indianbank.in) also. The duly completed "quotations/forms" should be submitted in sealed covers super-scribing on top as "**Quotation for furnishing and electrical works at the alternate premises of Naugai Branch (Distt. Singrauli)**" and addressed to the Zonal Manager, Indian Bank, Zonal Office, Satna at the above stated address latest by **05.03.2022 uptill 6:00pm**. The quotations will be opened on **next working day at 3:00pm**. However, Indian Bank reserves the right to accept or reject in part or full any or all the bids without assigning any reasons whatsoever.

Date: 17.02.2022

Zonal Manager

**BILL OF QUANTITY FOR FURNITURE WORK FOR INDIAN BANK, NAUGAI BRANCH**

Sr.No.	Description	Qty.	Unit	Rate	Amount
<b>FURNITURE WORK</b>					
<b>1</b>	<b>GYPSON BOARD FALSE CEILING</b>				
	Gypson Ceiling:-Providing and fixing false ceiling as per approved plan with Gypson board (India Gypson ) 12 mm thick on frame consisting of main and cross runners of GI section of 2.5" size @ 2.85 kg/12 feet and 1.75" @ 2.9 Kg/12 feet connected with screws to form a grid of not more than 2'x2'. Opening for lights and fans to be provided. The ceiling height shall not be less than 9'6" from the floor. The rate includes all extra frame work required to hold the concealed light fixtures, jointing with compound and fibre tape 3mm gypson punning/ plastering and 3 coats of Asian/Nerolac Acrylic emulsion paint.(With patta) &(White colour shed)	0	Sft.		
<b>2</b>	<b>ARMSTRONG FALSE CEILING</b>				
	Providing, fabrication and fixing of false ceiling at all heights of 600 mm x 600 m x 12 mm armstrong mineral fibre ceiling tiles of type BIZA RH - 90 laid on armstrong prelude XL exposed grid systems with 9 mm wide T Section flanges colour white. The framework comprise of main runner spaced at 1200 mm centers 1200 mm maximum centers. Hangres ( GI wire ) to be fixed by approved roof plug and screws etc. The last hanger at the end of each main runner should not be greater than 450 from the adjacent wall. Flush fitting 1200 mm long cross tees ( with double stitching ) to be interlocked between main runners at 600 mm enter from 1200 x 600 mm modules. Cut cross tees longer than 600 mm to be supported independently 600 mm x 600 mm modules to be formed by fittings 600 mm long flush fitting cross tees centrallybetween the 1200 mm cross tees. Perimeter trim to be armstrong wall angle secured to walls at 450 mm maximum centers. (Armstrong, gyproc,USG, Ceiling or equivalent)& (White colour)	0	Sft.		
<b>3</b>	<b>LOW LEVEL PARTITION FOR CUBICALS</b>				
a	<b>Low Hight Partition</b> -Low Height Partition (Solid) with 8mm glass Upto ht. of 4'-0"" in Banking hall for officers laminated and inclusive of door.				
b	<b>Sal wood/hollock or Equivalent</b> frame of section 2.5"x1.5" fixed in position with 2.5" to 3" long steel neettle fold screw. The vertical and horizontal members being placed at 2' c/c as per site condition as directed.				
c	Panel for solid partition fixing 8 mm water proof plywood, anti termite, borer proof plywood of century, Duro or Alpine make on both the sides of frame work with fevicol SH and headless nails of 17 nos of 1.25" length and securing the cover with 1.5" long steel nettled fold screw. Making the plywood surface level before fixing the laminate/veneer. <b>Make- Century, Green lam, Merino</b>	120	Sft.		
d	1 mm th laminate/ mica fixing on inside of panel with 1.5 mm th. Groove in the panel as per the design with provision of the openings in the panel for switch boards, box and cuts in frame for carrying conduits if necessary, and fixing 1.0 mm laminate on the outside face of shade and colour a per AB colour scheme given in the tender specification with 8mm glass to be given in the design. The open edge are to be blocked by teak wood bead of required size and design. <b>Make- Century, Green lam, Merino</b>				
<b>4</b>	<b>SEMI GLAZED PARTITION WITH DOOR - BRANCH MANAGER, CASH COUNTER &amp; SERVER ROOM</b>				
a	<b>Partly Glazed Full height Partition –</b> Supplying and erecting full height party glazed partitions (upto false ceiling height) as per drawing and conforming to the following specifications : <b>(Century ply, Green ply or Duro ply)</b>				
b	<b>basic frame work :</b> Sal wood/hollock or Equivalent sections, treated with two coats of wood preservatives, 50 mm wide x 50 mm (minimum) at maximum 600 mm horizontal or vertical spacing as per site conditions. Vertical members shall be suitably, anchored and at ceiling level to ensure rigidity. Exposed frame members in the glazed portions shall have wider spacing ( approx. 1800 mm. clear) as per instructions. Exposed members shall be finished with 1.00 mm thick laminate sheet of same or combination shades, over 6 mm mm thick BWR grade plywood facing including 4x6 mm grooves at locations as per instruction including door and fittings.				
c	<b>skin membrane :</b> (solid portion upto 900 mm from floor level and from 2100 mm to false ceiling with 6 mm thick BWR grade plywood on each face, with grooves formed as per drawings/ instructions.	130	Sft.		
d	<b>finishing :</b> 1.0 mm thick laminate sheet of same or combination shades as per instructions.				
e	<b>skirting :</b> 100 mm high x 12 mm thick polished teak wood skirting on both faces, with NC lacquer in mat finish				
f	<b>glazing : ( For B.M.Manager cabin &amp; server)</b> 8 mm. thick clear float glass fixed with continuous steam beech/teak wood glazing beads of approved shape (finished 35x25 mm) all round polished and coated with NC lacquer finish. The rate should also include cost for decorative etching on one side of the glass.				
g	Quoted rates shall include all necessary materials accessories and labor and also allow provisions for electrical /telephone/computer wiring conduits and switch boxes etc. (Materials for wiring conduits and switch boxes shall be separately paid for.) ( Server Room & Branch Manager ).				
<b>5</b>	<b>SOLID PARTITION WITH DOOR</b>				
a	Full Height Partition (Solid) Upto ht. of 10'-0"" in Banking hall for officers laminated and inclusive of door.				
b	<b>Sal wood/hollock or Equivalent</b> frame of section 2.5"x1.5" fixed in position with 2.5" to 3" long steel neettle fold screw. The vertical and horizontal members being placed at 2' c/c as per site condition as directed.				
c	Panel for solid partition fixing 8 mm water proof plywood, anti termite, borer proof plywood of century, Duro or Alpine make on both the sides of frame work with fevicol SH and headless nails of 17 nos of 1.25" length and securing the cover with 1.5" long steel nettled fold screw. Making the plywood surface level before fixing the laminate/veneer. <b>Make- Century, Green lam, Merino</b>	450	Sft		

d	1 mm th laminate/ mica fixing on inside of panel with 1.5 mm th. Groove in the panel as per the design with provision of the openings in the panel for switch boards, box and cuts in frame for carrying conduits if necessary, and fixing 1.0 mm laminate on the outside face of shade and colour a per AB colour scheme given in the tender specification with 8mm glass to be given in the design. The open edge are to be blocked by teak wood bead of required size and design. Make- <b>Century, Green lam, Merino</b>				
<b>6</b>	<b>Writing Desk</b>				
	Providing and fixing customer writing table 900mm circular made of 12 mm thplyboard supported on pedestal with necessary fixtures. The top to be provided with shelves for keeping forms/slips etc. all exposed surface to be paste with mica to match the ambience.	1	Nos		
<b>7</b>	<b>GLASS DOORS (BRANCH MANAGER, ATM &amp; MAIN ENTRANCE) with Glazing</b>				
	Providing & fixing main door & partition made up of 12 mm thk. Clear toughened glass shall be fixed in.Ozon / Enox make patch fitting with necessary hardware.With application of sealant from all sides. Edge polish for all exposed sides of glass. Complete as per design Door size 3'-0" x 7'-0" - Providing & fixing main door made up of 12 mm thk. Clear toughen glass shall be fixed in.Ozon / Enox make patch fitting with necessary hardware like floor spring, 12" S.S. finished decorative handle pair,& locking arrangement. Edge polish for all exposed sides of glass. Complete as per design	150	Sft		
<b>8</b>	<b>Suggestion Box</b>				
	Providing and fixing cheque drop box of size 450mm 750mmx300 mm with a slit opening of 10mmx150 mm and openable shutter of 250x262mm size with glass fixed above 1.5 m above ground level. All exposed surface to be pasted with matching laminate and inside with .1mm liner mica. The cost includes that of necessary fittings.	1	Nos		
<b>9</b>	<b>Cheque Drop Box</b>				
	Providing and fixing cheque drop box of size 450mm 750mmx300 mm with a slit opening of 10mmx150 mm and openable shutter of 250x262mm size with glass fixed above 1.5 m above ground level. All exposed surface to be pasted with matching laminate and inside with .1mm liner mica. The cost includes that of necessary fittings.	1	Nos		
<b>10</b>	<b>Frosted Film</b> -Providing & pasting frosted film (3M, Garware make) on glass work partition of entrance as required as directed by the consultant/Architect.	75	Sft		
<b>11</b>	<b>Logo</b> -Providing & pasting frosted film (3M, Garware make) coloured logo on entrance door as directed by the Consultant.	1	Nos		
<b>12</b>	<b>Flap Door</b> - Providing and fixing of 3'-6" wide & 4'-0" hight flap door as per drawing				
	a) Flap Door with door closure.	1	Nos		
	<b>TOTAL</b>				
<b>2. FURNITURE AND CABINETS</b>					
<b>13</b>	Providing and fabrication of table (with keyboard tray) having table body of 18mm, 12mm & 6mm thk plywood and table top & shutters of 19mm thk block board. The drawer unit must have one drawer mounted on drawer slider and shuttered shelf under it. A readymade metallic keyboard tray must be fixed under the table top. A round, PVC cable crossing socket (cable manager) must be fixed on the table top for power/data cable crossing. A foot rest, made of 19mm thk block board must be fixed and a CPU carrier, on the footrest level must be fixed. The table top and all other exposed surfaces must be covered with 1.0mm thk laminate. All inside/hidden surfaces must be finished with one coat of primer and three coats of synthetic enamel paint. All the edges and corners must be protected with 6mm thk plain teak wood bead. 4" high skirting				
	must be fixed on exposed surfaces. All the teak wood must be finished with 3 coats of synthetics paint. Automatic locks and handles must be fixed in drawers & shutters.				
i	<b>Branch Manager Table</b> Table- 1750 mm x 750 mm x 750 mm Side Unit- 1050mm x 375mm x 750mm	1	No		
ii	<b>OFFICER TABLE</b> Table Size - 1375 mm x 750 mm x750 mm	4	Nos		
<b>14</b>	<b>Cash Counter / Single window counter</b>				
	Cash counter: Providing and fixing of Cash cabin with 12mm front glass railing providing and erecting in position cash counter /cash work station of approx . Size 1400mm (L)X 750MM (w)X 750 MM(H) inclusive of 1500mm high, 375mm wide customer writing top & drop down flap box 600mmx300mm with rear partition including door 750x2250mm made of 18mm thk.commercial ply with 1mm thk. laminate & 12mm thk. glass on the top of the counter & 8mm thk. glass on the side partition MS power coated ke board try, cashier drawer of commercial ply etc complete. partition ht. up to 7' with back side glazed door and and top with aluminium grill side wall partition 8mm thk. glass as per drawing inclose and as per instruction of the architect.	1	No		
<b>15</b>	<b>Storage Units</b>				
	<b>Low Height / Full Height Cabinet:</b> Providing and fabrication of 3' / 7' high and 1'6" deep file/storage cabinet with cabinet body of 18mm,12mm & 6mm thk plywood. One row of drawers (mounted on drawer slider) must be there on the cabinet and shuttered shelf under the drawer must be provided. The shutters of the shelves must be of 19mm thk block board. All the external exposed surfaces of the cabinet must be covered with 1.0mm thk laminate. All the internal/hidden surfaces must be finished with one coat of primer and three coats of synthetic.				
	Enamel paint of matching colour of the laminate. All the edges/ corners of the plywood must be protected with 6mm thk plain teak wood bead. 4" high skirting must be fixed on exposed surfaces. All the exposed teak wood surfaces must be finished with three coats of melamine polish. Multipurpose lock and handle must be fixed on shutters and drawers.				

<b>a</b>	<b>low height - 750 mm/ 900mm Height</b>	175	Sft		
	<b>TOTAL</b>				
	<b>GRAND TOTAL</b>				
	<b>GST</b>				
	<b>TOTAL AMOUNT INCLUDING GST</b>				

<b>SR.</b>	<b>DESCRIPTION</b>	<b>MAKE / BRANDS</b>
1	HDF. (High Density Fibre Board) – CONFIRMING TO IS : 12406 - 2003. (Density: 750 – 850 Kgs/m3) colour code follow as per Bank Norms.	CENTURY/GREENPLY
2	PLYWOOD – BWP (Boiling Water Resistant, Termite Resistant & Borer Resistant) – CONFIRMING TO IS: 303.	CENTURY/GREENPLY
3	BLOCK BOARD – CONFIRMING TO IS : 11255 - 2003.	CENTURY/GREENPLY
4	FLUSH DOOR – CONFIRMING TO IS : 2202 (Part – 1) – 1991.	CENTURY/GREENPLY
5	LAMINATE – CONFIRMING TO IS : 2046-1995.	CENTURY/GREENLAM
6	Lipping & Moulding	First Class Teak Wood
7	Gypsum ceiling	Gypsum India, Saint - Gobain
8	Grid Ceiling	Armstrong, Dexune
9	GI Support system for False Ceiling	GYPSTEEL ULTRA
10	Adhesive	Fevicol SH.
11	Locks/Handles & all other hardware	Godrej,Dorset
12	Glass	Modi/Asahi(Tata),Saint Gobain
13	Aluminium	Jindal/Hindal/Indal
14	Door Closer	OZONE/Dorma
15	FLOOR SPRING	OZONE/GODREJ
	Vertical Blinds	Vista
16	Paint	Nerolac / Asian Paints
17	Wood Preservative	Bison by British Paints /
18	Cement	ACC / Ambuja/Birla Plus
19	Presersative	Solignum/Black Japan /
20	Sanitary Fittings	Kohler / Hindware
21	CP fittings	Jaguar
22	GI pipe	Jindal/Bhushan
23	Floor & Wall tiles	Nitco/Kajaria
24	Overhead Water tank	Sintex

**NOTE:**

- 1- The contractor is strictly advised to use the makes specified/approved by the Bank/Architect, unspecified items will not be paid until they are changed with the specified ones.
- 2- The Plywood used for the work shall be BWR ( Boiling water proof range) confirming to IS 303.
- 3- No escalation shall be paid to the contractor for material or labour.

Place:

Date:

Signature of contractor with seal

**BILL OF QUANTITY FOR ELECTRICAL WORK FOR INDIAN BANK, NAUGAI BRANCH**

**ELECTRICAL WORK (BRANCH & ATM)**

S. No.	PARTICULARS	UNIT	QTY	RATE	AMOUNT
1	Providing and fixing, testing and commissioning for point wiring two nos. 1.55 sq. mm/2.5 sq.mm or 4.0 sq.mm PVC insulated single core stranded copper conductor wire 1100 volt grade (for Ph&N) and one nos. 1.0 sq. mm/ 1.5 sq. mm PVC insulated single core stranded copper conductor wire 440 volt grade, for earth wire 1.6 mm th. 25 mm dia BEC / NIC / AKG make PVC conduit pipes. All wires are to be ISI mark approved / specified make Anchor/ Finolex / Havells complete with all drops upto boards, staples, accessories and hardware etc. Installing the conduit in slabs, wall etc. The point shall include modular type switches of MK Anchor, Roma, Crab tree make as approved / specified in required combination including electronic regulator, 6 ASP control switch 3-plate ceiling rose, angle or straight holder adequate size to mount control switches for lights, fan sockets. Sockets for half points and ceiling fan regulator. rate must also include the cost of circuit wiring with 2x2.5 sqmm+1x1.5 sqmm				
a	Light points. & exhaust fan points	No.	35		
b	Fan with <b>regulator</b> (ceiling + bracket) (2x1.50 sq.mm + 1x1.5 sq.mm)	No.	10		
c	Call bell points inclusive of <b>call bell</b> .	No.	1		
e	16 Amp 3/5 pin point (2x2.5 sq.mm +1x1.5 sqmm)	No.	9		
f	<b>Ac point</b> -supply installation of AC point with following item in surface / concealed manner 32 A D.P. 1 way switch with neon, plate & box 20 amp. 10 amp. Twinsocket with plate & box including 2x4.0 + 1x1.5 sqmm cu. Wire with pvc conduit etc complete.	No.	2		
2	<b>Telephone Socket Point</b> -Supplying, fixing and testing of telephone socket point wiring with two line telephone wire of approved Anchor Havells/Finolex make in 1.6 mm th 1" dia PVC conduit pipe including double line tel-Jack (modular type) on the switch board.	No.	2		
	10 pair tag block	No.	1		
3	<b>IVERTER WIRING</b> : Wiring for Lighting and fans l points with 1x1.5 Sqmm PVC insulated copper conductor recessed in wall/under counter in PVC pipe/flexible pipe/casing capping as required. Rate inclusive of 3 nos. 6 amp switch & socket (5pin) (modular) with fuse & indicator i/c of box, base plate & cover plate, making all connections complete. (Average length 15M )	No	10		
4	<b>UPS POINTS:</b> Wiring for computer terminal points with 2x1.5Sqmm + 1x1.5 Sqmm PVC insulated copper conductor recessed in wall/under counter in PVC pipe/flexible pipe/casing capping as required. Rate inclusive of 3 nos. 6 amp switch & socket (5pin) (modular) with fuse & indicator i/c of box, base plate & cover plate, making all connections complete. (Average length 15M )	No	10		
5	<b>TIMER</b>				
A	Providing and installation of electronic digital no/off timer, load bearing up to 800 watt for glow sign board with 20Amp pp MCB in enclosure	No.	1		
B	Additional copper piping for instalation of split Ac's at far end.	Rm	25		
6	<b>Ceiling Fan-</b> Supply, Erecting,and testing of approved/specified make ceiling fans complete with down rod, canopy, blades and Electronic speed regulator 230-250 volts including connection with all necessary materials as required. <b>Make- Usha/ Havells/ Bajaj</b>	No.	5		
7	<b>Wall Mounted Fan</b> -Erecting,and testing of approved/specified make ceiling fans Supplied by the bank completWall mounted fans (METAL BODY) 400 mm dia. make , speed regulators etc. 230-250 volts with connections,raw bolts/anchor hole fastener completely finished. <b>Make- Crompton/ Havells/ Usha</b>	No.	0		
8	<b>Exhaust Fan</b> -Supply,Erecting,and testing of approved/specified make Exhaust fan 300 mm dia (matal frame) complete with motor, mounting frame blades with connection, bolts, anchor fasteners etc complete. <b>Make- Usha/ Havells/ Bajaj</b>	No.	3		
9	Supply, installation,testing, & commissioning of lighting fixtures. All fixtures should be complete with all accessories such as lamps,starters, low loss copper chokes,PF improvement capacitors etc.The fixtures should be complete with ball & socket type vibration dampers & all accessories with necessarydown rods.Above specification governs all work specified below:				
a	<b>ELECTRICAL FIXTURES &amp; FITTINGS-</b> Erecting,and testing of approved/specified make Lights Supplied by the bank complet Halonix Radiance- Ultralim <b>LED</b> flate panel 36w hlfpu22-02-36-cw/ww, size-600x600x10mm, recess/ pendant mounting ultraslim led flate panel 2'x2' with high efficient led & glarg opal diffuser.	No.	0		
b	<b>Down Light-</b> : Erecting,and testing of approved/specified make down lights Supplied by the bank complet recessed mounted down lighters (Wipro: WCP 32218 2 x 18W <b>LED</b> (TC-D)	No.	0		
c	<b>Tube light</b> -Upply, Erecting and testing of approved/specified make tube lights Supplied by the bank complet of 18 W <b>LED</b> FTL ( <b>wipro wdf 8140</b> ) single tube fitting complete.	No.	25		
10	Supply and installation of circuit in app. make1.6 mm thick,25mm dia PVC pipes and at places where decorum is to be maintained in PVC casings with approved make PVC insulated wire as under. The rate shall be inclusive of all necessary fittings like junction boxes, tees, bends, saddles screws etc complete. PVC pipe to be of BEC/NIC/AKG make and wire of Havells/RR/ Finolex make.				

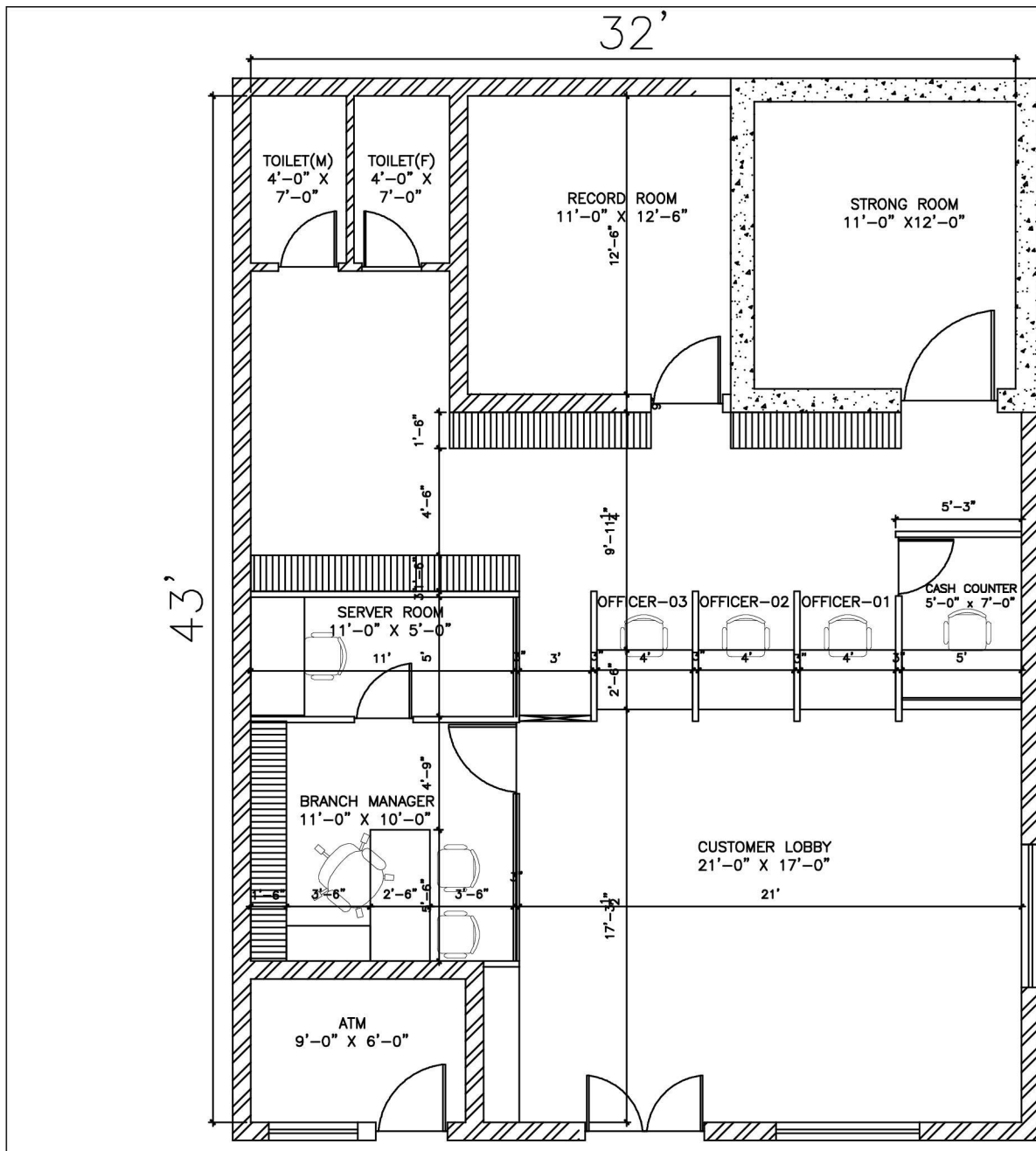
a	10x4 sq.mm + 1x1.5 sq. mm	Rm	65		
11	Supply and installation and connection of modular type app./ specified switch and socket complete with PVC box plate screws and all other accessories. Rate must also include the cost of circuit wiring with 2x2.5 sqmm + 1x1.5 sqmm				
	3 Nos. socket + 2 Nos. switches (6A) <b>Make- Legrand/ Havells/ Panasonic</b>	No.	15		
12	Supply, installation, testing and commissioning of distribution board incoming 63 TPN MCB - 1 Nos.outgoing 6 Amp SPMCB - 8 Nos. and 2 Nos. 40 Amp DPMCB. <b>Make- Legrand/ Havells/ L&amp;T</b>	No.	1		
13	<b>UPS Input DB:-</b> UPS input DB 40Amp DP MCB with box. <b>Make- Legrand/ Havells/ L&amp;T</b>	No.	1		
14	<b>UPS Output DB:-</b> UPS output DB with 40Amp DP MCB & outgoing 10Amp SPMCB. <b>Make- Legrand/ Havells/ L&amp;T</b>	No.	1		
15	<b>LAN- (LOCAL AREA NETWORKING ) FOR COMPUTERS :</b>				
a	Supply and Installation of following factory fabricated patch cords ( UTP-CAT 6 ) complete with connectors on both sides.				
	Two Meter length.	Nos.	12		
b	Supply and laying of Four Pair UTP CAT 6 LAN cables in 1 mm thick 20 or 25 mm dia pvc conduit t / Floor trunking with RJ-45 connector. including Supply and fixing of modular type Information Outlets with suitable size M.S./ PVC modular boxes complete with insulation displacement connectors etc suitable for CAT 6 UTP Cabling. One Port.	Nos.	12		
c	Supply, Installation, Testing and Commissioning of the following Rack on existing wall / table / plateform etc i/c fixing of equipment/ accessories etc as required.				
	9 U Rack.	Nos.	1		
16	<b>D-Link Switch :-</b> Providing and fixing at site 24/48 port D link make cat-6 data switch	Job	0		
17	<b>EARTHING:</b> 600 x 600 x 3mm copper plate earthing i/c of watering, GI pipe with funnel, salt & coal filling, 10" x 10" masonry chamber with sand plaster, CI lid, 10SWG copper wire in PVC pipe from bottom of pit to existing ground level.	Nos.	2		
18	Earth wire 6sqmm COPPER WIRE	Rm	45		
19	Light DB :- 4 WAY TPND-1 No , 63 A TPN MCB -1 NO, 10-32A SPMCB	No	1		
				<b>Total</b>	
	<b>GST</b>				
	<b>TOTAL AMOUNT INCLUDING GST</b>				

DESCRIPTION		Approved Makes	
S.N.	PVC Conduit	Precision/AKG	
1	Ceiling Junction Boxes	Home lite/ANCHOR	
2	Wires & cables	R.R./Polycab	
3	Modular Switches, Sockets etc	Legrand/Havells/L. & T.	
4	Lighting Fixtures	Philips/Wipro/Crompton	
5	M.C.B./RCCB/RCBO etc	Legrand/Havells/L&T	
6	Distribution Boards	Same As Above	
7	MCCB	A.B.B./Schneider/Legrand/L. & T.	
8	Change Over Switches	H.P.L./A.B.B./Standard/ L. & T.	
9	End Termination accessories	Dowells/Usha/Brecco/Cosmos	
10	Telephone Cables & accessories	Havells, Krone, Finolex,	
11	Fans/Exhaust fans	Crompton/Havell/USHA	
12	Music Speakers	Philips/Bosch/Ahuja	
13	Amplifiers	Philips/Bosch/Ahuja	
14	DVR	Samsung, Honeywell, HIKVISION	
15	Rg11, CAT5/CAT6 cables/Telephone wires	Legrand, Molex, D'Link, AMP	
16	CCTV Dome Camera	Honywell, HIKVision	
17	Hard Disk drive	Seagate, HIKVISION	
18	Smoke/Heat/Optical Fire Detectors	Edward, Siemens, Appolo Or other I.S.I.	
19	Response Indicators, Hooters	Edward, Siemens OR other ISI Approved.	
20	Telephone Tag Block	Krone	

Place:

Date:

Signature of contractor with seal



32'

43'

TOILET (M)  
4'-0" X  
7'-0"

TOILET (F)  
4'-0" X  
7'-0"

RECORD ROOM  
11'-0" X 12'-6"

STRONG ROOM  
11'-0" X 12'-0"

SERVER ROOM  
11'-0" X 5'-0"

BRANCH MANAGER  
11'-0" X 10'-0"

ATM  
9'-0" X 6'-0"

CASH COUNTER  
5'-0" X 7'-0"

OFFICER-03

OFFICER-02

OFFICER-01

CUSTOMER LOBBY  
21'-0" X 17'-0"

1'-6"

4'-6"

9'-11 1/2"

5'-3"

11'

5'

3'

2'-6"

4'

4'

4'

5'

4'-9"

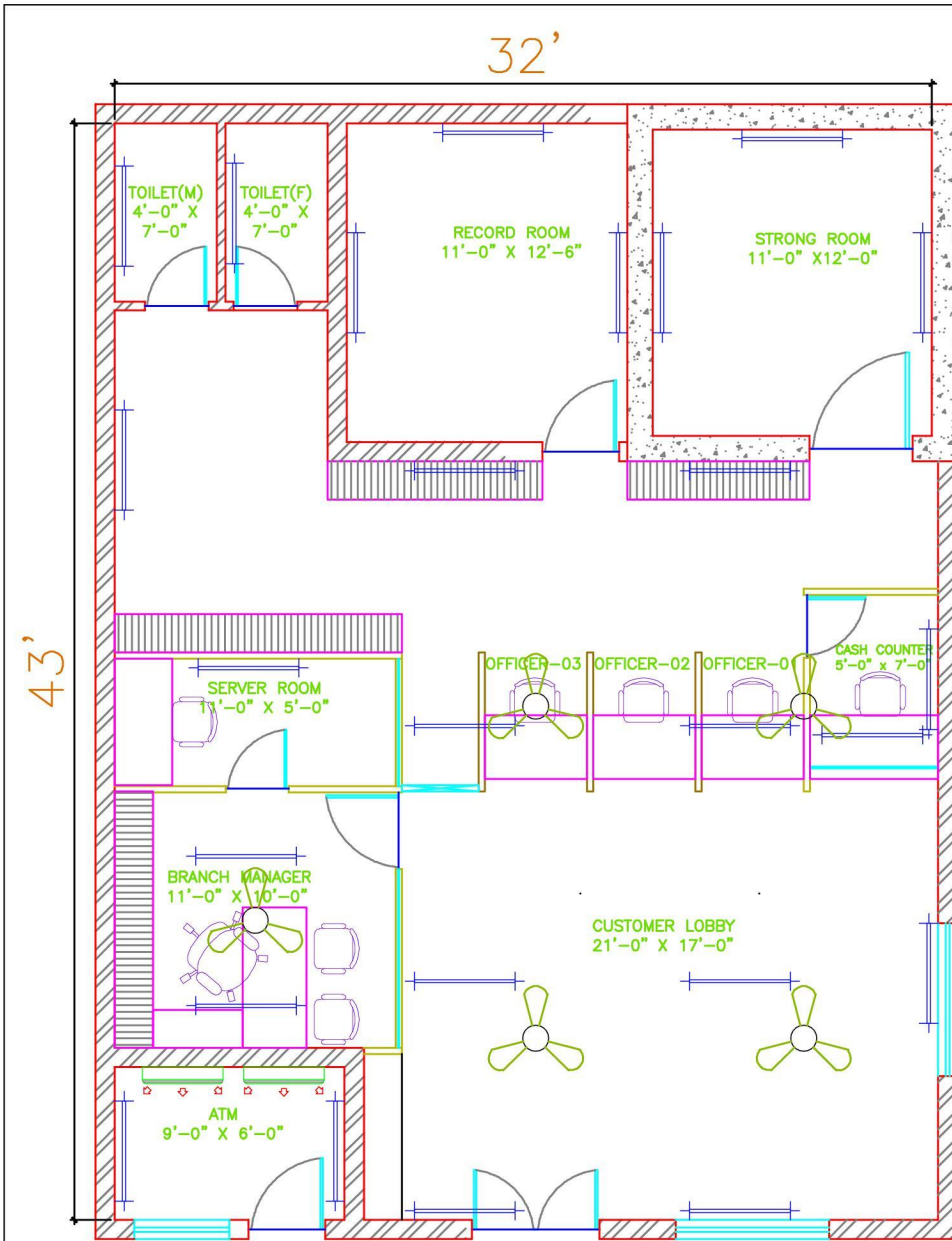
3'-6"

2'-6"

3'-6"

17'-3 1/2"

21'



DESCRIPTION	SYM	HEI
WALL FAN		8'-0"
TUBE LIGHT (LED)		8'-0" / 7'-0"
4'-0" X 2'-0" LIGHT (LED)		ceiling
CEILING FAN		ceiling
2' X 2' DOWN LIGHT (LED)		ceiling
		7'-0"